



CITY of NOVI CITY COUNCIL

Agenda Item 12
May 21, 2018

SUBJECT: Approval to award civil engineering services to AECOM for construction engineering services associated with the 2018 and 2019 Concrete Neighborhood Roads Program, in the amount of \$189,265.91.

SUBMITTING DEPARTMENT: Department of Public Services, Engineering Division

CITY MANAGER APPROVAL:

EXPENDITURE REQUIRED	\$ 92,790.17 NRP 2018- Concrete
	\$ <u>96,475.74</u> NRP 2019- Concrete
	\$ 189,265.91 Total
AMOUNT BUDGETED	\$ 300,000 NRP 2018- Concrete (FY 2017-18)
	\$ <u>1,100,000</u> NRP 2018- Concrete (FY 2018-19)
	\$ 1,400,000 Subtotal
	\$ 200,000 NRP 2019- Concrete (FY 2018-19)
	\$ <u>1,800,000</u> NRP 2019- Concrete (FY 2019-20)
	\$ 2,000,000 Subtotal
	\$ 3,400,000 Total
APPROPRIATION REQUIRED	N/A
LINE ITEM NUMBER	203-203.00-864.191 (102-01 NRP 2018 - Concrete)
	203-203.00-864.201 (102-01 NRP 2019 - Concrete)

BACKGROUND INFORMATION:

AECOM, engineering consultants to the City, helped develop a list of streets for the 2018 and 2019 Neighborhood Roads Program (NRP). Staff divided the program into two contracts with one focusing on concrete roads and other one focusing on asphalt roads. The program was advertised for a two-year contract to capture unit prices and lower logistical costs of bidding and design. This process allows the City flexibility in regards to the scheduling of different project areas. The Neighborhood Roads Program work includes concrete rehabilitation and reconstruction of local roadways in an effort to preserve the longevity of the existing roadways.

The roads selected for 2018 Concrete Neighborhood Roads Program are South Lake Drive, Sterling Drive, Serenity Drive, North Hills Court, Darcey Court, and Broadmoor Park Boulevard.

The roads selected for the 2019 Concrete Neighborhood Roads Program are Rossdale Court, Woodside Court, Addington Lane, Cheyenne Drive, and Cody Lane.

AECOM assisted the Engineering Division with developing the plans for this project. Staff advertised the plans for public bids on April 26, 2018. The construction phase engineering fees are determined using two components: 1) The contract administration fee, using the

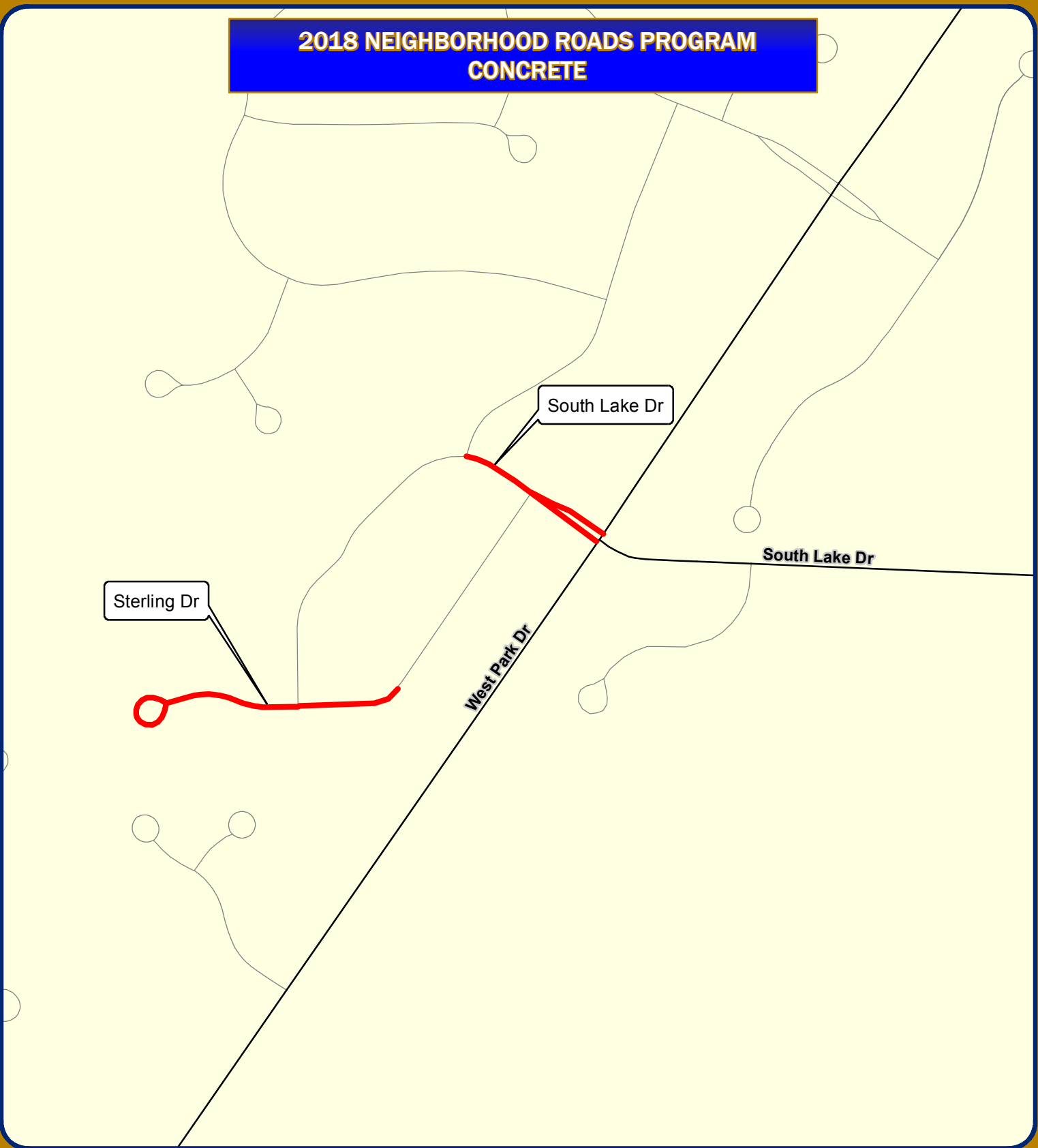
fee percentage in Exhibit B of the Agreement for Professional Engineering Services for Public Projects; 2) The construction inspection fee, using a cost per inspection (crew) day from Exhibit B of the consultant's agreement, multiplied by the number of days of inspection specified by the contractor.

The construction phase engineering fees for the project include a 2018 contract administration fee of \$38,190.17 (3.75% of the \$1,018,404.50 construction bid), a 2018 inspection fee of \$54,600 (\$700 per crew day, multiplied by the 78 days provided in the contractor's bid), a 2019 contract administration fee of \$39,775.74 (3.75% of the \$1,060,686.50 construction bid), and a 2019 inspection fee of \$56,700 (\$700 per crew day, multiplied by the 81 days provided in the contractor's bid) for a total fee of \$189,265.91.

The construction contract award is proposed for consideration elsewhere on this agenda. The 2018 selected roads will be substantially complete by fall 2018. The 2019 selected roads will be substantially complete by fall 2019.

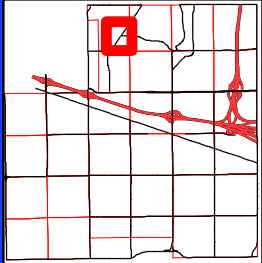
RECOMMENDED ACTION: Approval to award civil engineering services to AECOM for construction engineering services associated with the 2018 - 2019 Concrete Neighborhood Roads Program, in the amount of \$189,265.91.

2018 NEIGHBORHOOD ROADS PROGRAM CONCRETE



Map Author: Joseph Akers
 Date: May 10, 2018
 Project: 2018 Road Construction
 Version #: 1.3

Legend
 2018 Neighborhood Roads - Concrete



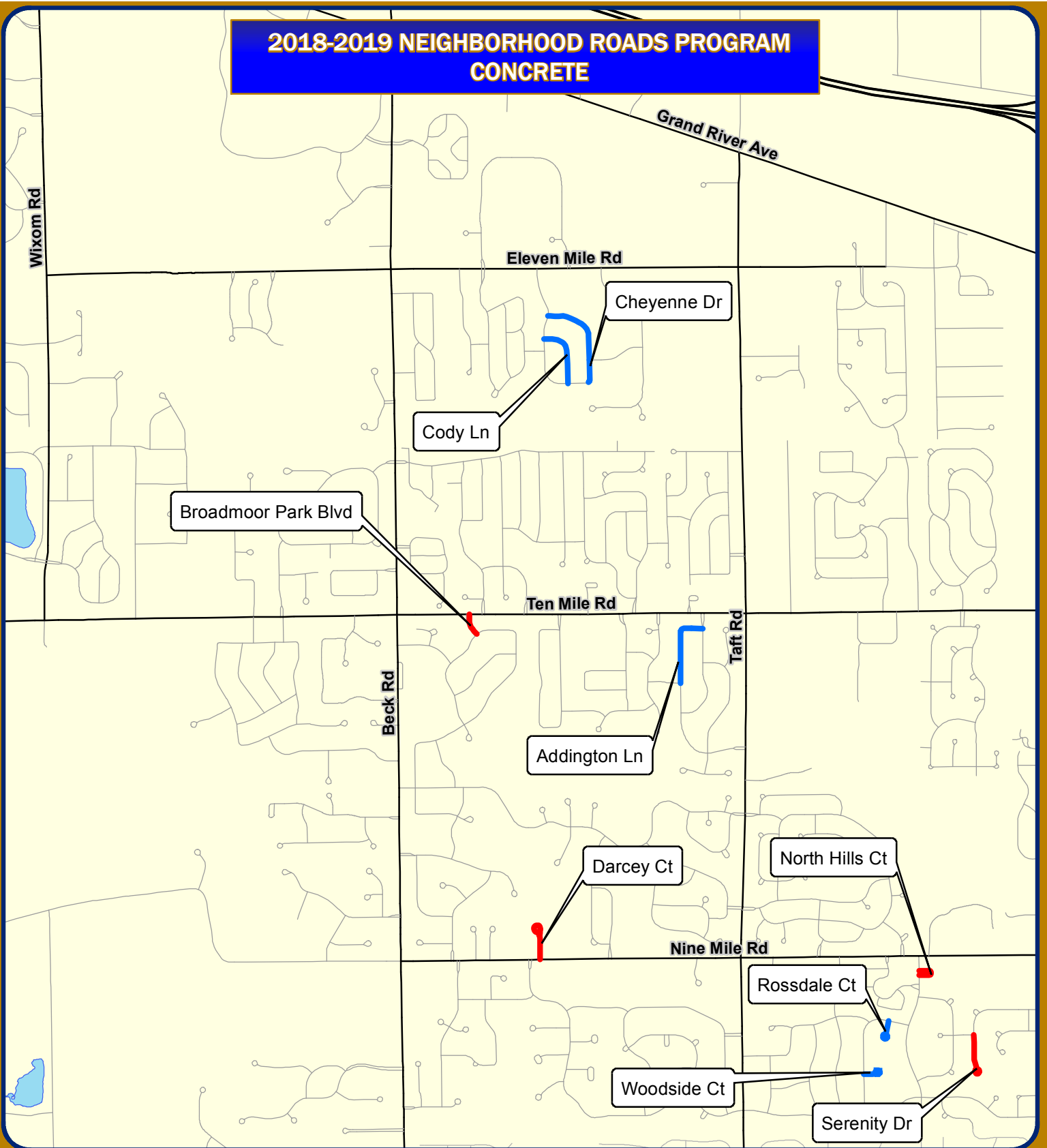
City of Novi
 Engineering Division
 Department of Public Services
 26300 Lee BeGole Drive
 Novi, MI 48375
 cityofnovi.org

Feet
 0 85 170 340 510
 1 inch = 412 feet



MAP INTERPRETATION NOTICE
 Map information depicted is not intended to replace or substitute for any official or primary source. This map was intended to meet National Map Accuracy Standards and use the most recent, accurate sources available to the people of the City of Novi. Boundary measurements and area calculations are approximate and should not be construed as survey measurements performed by a licensed Michigan Surveyor as defined in Michigan Public Act 132 of 1970 as amended. Please contact the City GIS Manager to confirm source and accuracy information related to this map.

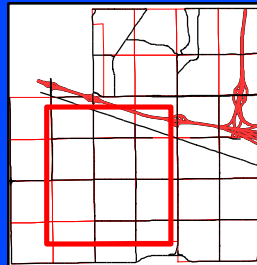
2018-2019 NEIGHBORHOOD ROADS PROGRAM CONCRETE



Map Author: Joseph Akers
 Date: May 10, 2018
 Project: 2018 Road Construction
 Version #: 1.3

Legend

- 2018 Neighborhood Roads - Concrete
- 2019 Neighborhood Roads - Concrete



City of Novi

Engineering Division
 Department of Public Services
 26300 Lee BeGole Drive
 Novi, MI 48375
 cityofnovi.org



1 inch = 2,000 feet



MAP INTERPRETATION NOTICE

Map information depicted is not intended to replace or substitute for any official or primary source. This map was intended to meet National Map Accuracy Standards and use the most recent, accurate sources available to the people of the City of Novi. Boundary measurements and area calculations are approximate and should not be construed as survey measurements performed by a licensed Michigan Surveyor as defined in Michigan Public Act 132 of 1970 as amended. Please contact the City GIS Manager to confirm source and accuracy information related to this map.



May 11, 2018

Mr. Joseph Akers
City of Novi
Engineering Department
26300 Lee BeGole Dr
Novi, MI 48375

Reference: 2018-2019 Concrete Neighborhood Roads Program – Construction
Engineering Services
AECOM Project Number 60568693

Dear Mr. Akers:

AECOM is pleased to provide the following proposal for Construction Engineer for the 2018-2019 Concrete Neighborhood Roads Program project in accordance with the Civil Engineering Master Services Agreement dated December 18, 2017.

Project Overview and Scope of Services

This project includes reconstruction of concrete pavement, and upgrades to adjacent ADA ramps. Our Construction Engineering services will include Construction Contract Administration and Inspection, as defined in the Civil Engineering Master Services Agreement.

Construction Cost and Proposed Fees

Construction Administration fee is based on a percentage of the as bid construction cost and the percentage used is based on the type of proposed work, as defined in the original Agreement. The fees for this project will be based on the “Construction” rates in the fee table.

Construction Inspection Services will be provided for \$700.00 per crew day as described in the original Agreement. The original budget will be that of the Crew Day bid amount of the awarded Contractor.

2018 CONSTRUCTION ADMINISTRATION:	$\$1,018,404.50 \times 3.75\% = \$38,190.17$
2018 CONSTRUCTION INSPECTION:	$\$700.00/\text{Crew Day} \times 78 \text{ Days} = \$54,600$
2019 CONSTRUCTION ADMINISTRATION:	$\$1,060,686.50 \times 3.75\% = \$39,775.74$
<u>2019 CONSTRUCTION INSPECTION:</u>	<u>$\\$700.00/\text{Crew Day} \times 81 \text{ Days} = \\$56,700$</u>
TOTAL:	\$189,265.91

Please feel free to contact me if you have any questions regarding this matter.

Sincerely,

Sean Kelsch, P.E. Project Manager