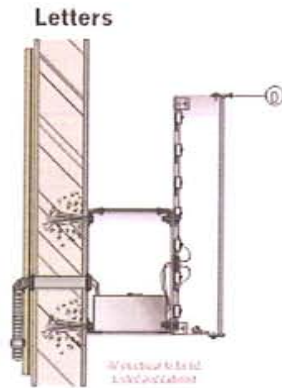
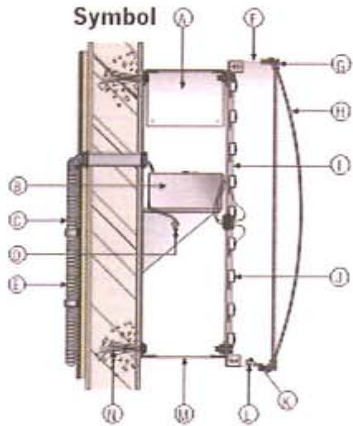


East Elevation

A Raceway Illuminated Letterset White Faces

Option 2
Install raceway mounted letters as shown. Raceways painted Pantone 464U.

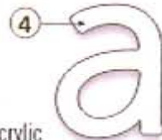
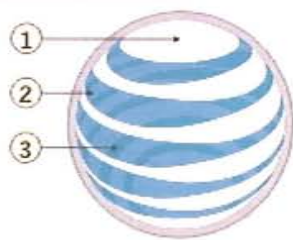
Raceway Wired Letter Cross Section Detail



A	removable cover located at top
B	power supply
C	conduit (1/2" min.)
D	listed disconnect switch
E	primary electrical source
F	aluminum return
G	metal retainer
H	acrylic face
I	electrical supply wire
J	GE Gelcore LED Module
K	light screen for weep hole
L	weep hole
M	aluminum raceway
N	attach to wall as required
O	1" Jewelite trim cap



Colors Break Down



4. #2447
White Acrylic

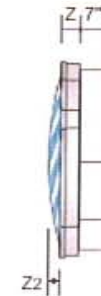
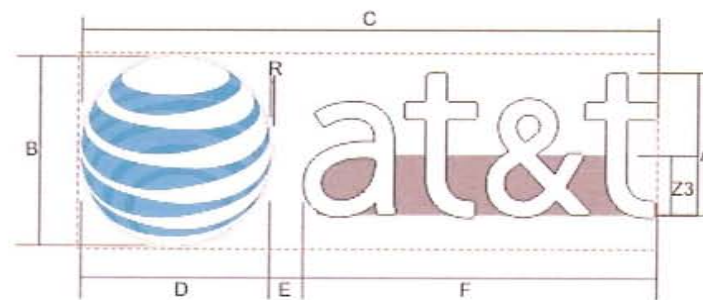
- 3M #3635-30 White Diffuser
- 3M #3630-8071 Light Blue
- 3M #3630-8015 Dark Blue

	Face	Return	Trim
Symbol	1/8" thick Clear Acrylic	Painted AT&T Brushed Alkan.	NA
Letters	1/8" thick White Acrylic	Painted AT&T Brushed Alkan.	Silver Metallic

Films to be applied Second Surface

Inferiors to be painted with Spray-Lit Star Bright White Light enhancement paint.

Raceways to be Painted Pantone 464U



CUSTOM	A	B	C	D	E	F	Sq. Ft.	R	Z	Z2	Z3	Return Top	Symbol Return Top	Special Back Top	Letter Back Top
LIF-R-W-H	3'-2 3/8"	4'-3 7/16"	13'-0 9/16"	4'-3 7/16"	8 15/16"	8'-0 1/4"	58.0	3/4"	5'	3 3/16"	1'-4 1/16"	.063"	.090"	.125"	.125"



Corporate Headquarters:
837 Riverfront Dr. Suite 300,
Sheboygan, WI 53081
PHONE: (920) 208-0836 FAX: (920) 208-0919
Regional Offices:
Crystal Lake, IL Birmingham, AL
Duluth, GA Knoxville, TN
Minneapolis, MN

Sales Coordinator: TK Designer: CJ

REVISIONS

	X
	X
	X
	X
	X

Location: Novi, MI

Address: 26050 Novi Rd.

Date: 07/23/09

S:\Priority Sign\art\Dept\Corel Colors\at&t

Approval:

I.D. #
X
Artwork #
X

Scale: 1:50
Drawing #
C24661p2

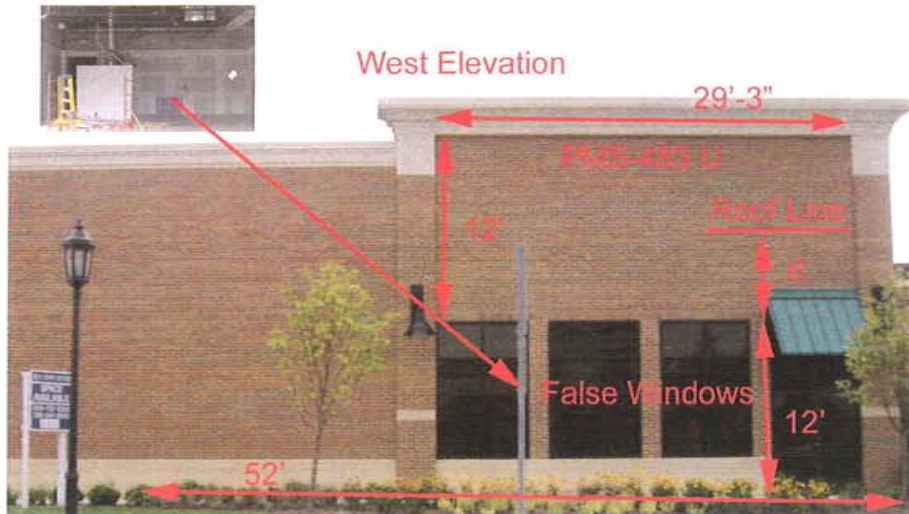
ATT
26050 Novi Rd
Novi MI



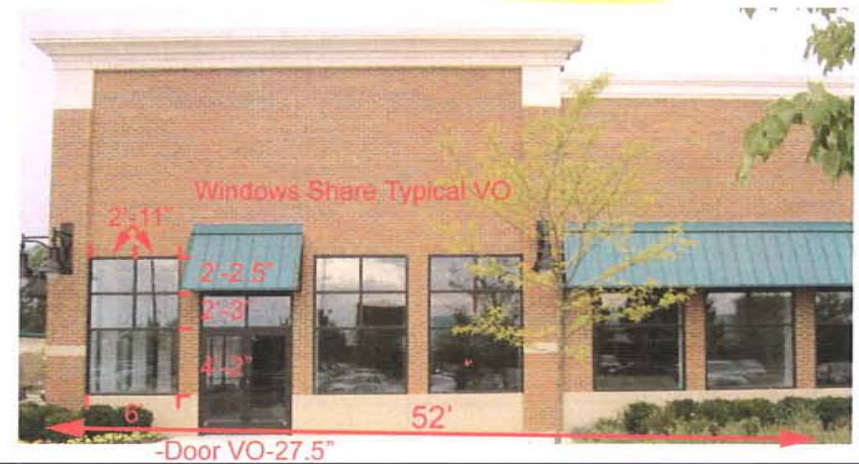
South Elevation



West Elevation



East Elevation



ALLIED SIGNS, INC.

33650 Giftos Dr.
Clinton Twp., MI. 48035

www.alliedsignsinc.com

Phone / (586) 791-7900

Fax / (586) 791-7788

Email / alliedsigns@alliedsignsinc.com