



# CITY of NOVI CITY COUNCIL

Agenda Item J  
December 15, 2008

**SUBJECT:** Consideration of City *DeFacto* Street Acceptance of Junction (440 linear feet), Trestle (820 linear feet), and a portion of Clark Street (638 linear feet) located in the Creek Crossing subdivision.

**SUBMITTING DEPARTMENT:** DPW

**CITY MANAGER APPROVAL:**

**BACKGROUND INFORMATION:**

Junction, Trestle and a portion of Clark Street meet the City's defacto street criteria (streets located in platted subdivisions that did not previously go through the City 's formal dedication/acceptance process). The City would receive approximately \$823 annually for the 1,898 linear feet or .36 miles of roadway.

**RECOMMENDED ACTION:** Consideration of City *DeFacto* Street Acceptance of Junction (440 linear feet), Trestle (820 linear feet), and a portion of Clark Street (638 linear feet) located in the Creek Crossing subdivision.

	1	2	Y	N
Mayor Landry				
Mayor Pro Tem Capello				
Council Member Crawford				
Council Member Gatt				

	1	2	Y	N
Council Member Margolis				
Council Member Mutch				
Council Member Staudt				



## CITY OF NOVI

### ***DEFACTO* STREET ACCEPTANCE RESOLUTION**

#### **Junction, Trestle, and a portion of Clark Street**

##### **CITY COUNCIL**

Mayor  
David B. Landry

Mayor Pro Tem  
Kim Capello

Bob Gatt

Terry K. Margolis

Andrew Mutch

Kathy Crawford

Dave Staudt

City Manager  
Clay J. Pearson

City Clerk  
Maryanne Cornelius

**WHEREAS**, the City's Act 51 Program Manager is requesting formal acceptance for Junction, Trestle, and a portion of Clark St., local streets within Creek Crossing Subdivision, and ,

**WHEREAS**, combined, these streets total 1,898 linear feet or .36 miles of roadway; and,

**WHEREAS**, these streets will be added to the Act 51 map; and,

**WHEREAS**, the City will receive approximately \$823 of Act 51 money for maintaining the .36 miles of streets, and,

**WHEREAS**, these streets are located within a platted subdivision, have been constructed to City Standards, and are open to the public.

**NOW, THEREFORE, BE IT RESOLVED**, that the Mayor and Novi City Council hereby accept Junction, Trestle, and a portion of Clark Street in the City's public street system.

#### **CERTIFICATION**

I, Maryanne Cornelius, duly appointed City Clerk of the City of Novi, do hereby certify that the foregoing is a true and complete copy of a Resolution adopted by the City Council of the City of Novi at a Regular meeting held this 15th day of December, 2008.

---

Maryanne Cornelius, City Clerk



**City of Novi - Department of Public Works**  
 Clark Street from Marlson Street to the dead end to be added.



**CITY OF NOVI**  
 DEPARTMENT OF PUBLIC WORKS &  
 DEPARTMENTS OF WATER & SEWER  
 NOVI CITY DPW OFFICES  
 26300 DELWAL  
 NOVI, MI 48375  
 (248) 735-5640  
 WWW.CITYOFNOVI.ORG



Map Print Date: November 13 2008  
 Map Author: Jeff Van Curler

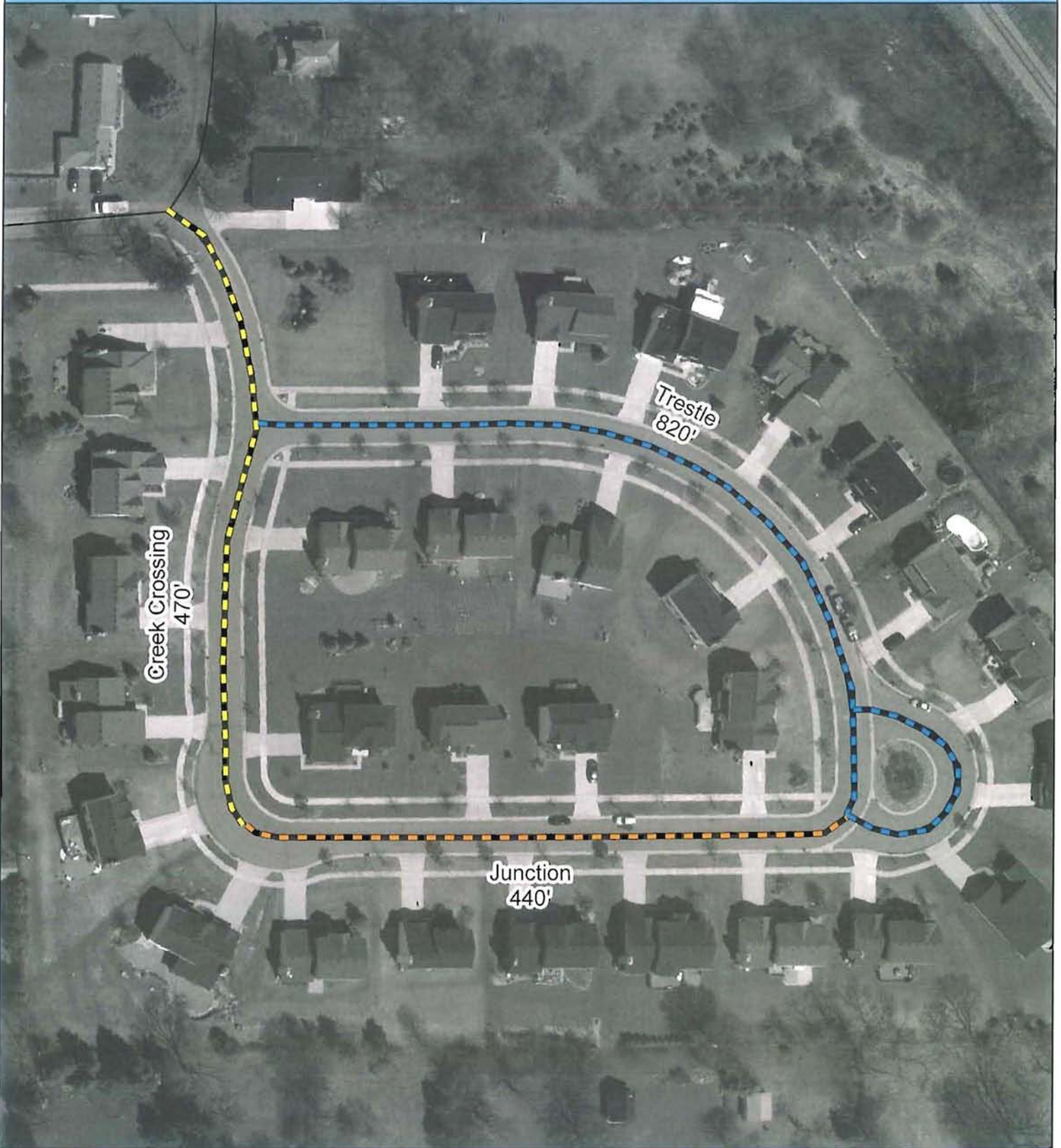


**MAP INTERPRETATION NOTICE**

Map information depicted is not intended to replace or substitute for any official or primary source. This map was intended to meet National Map Accuracy Standards and use the most recent, accurate sources available to the people of the City of Novi. Boundary measurements and area calculations are approximate and should not be construed as survey measurements performed by a licensed Michigan Surveyor as defined in Michigan Public Act 132 of 1970 as amended. Please contact the City GIS Manager to confirm source and accuracy information related to this map.



City of Novi - Department of Public Works  
Creek Crossing streets and lengths.



**CITY OF NOVI**  
DEPARTMENT OF PUBLIC WORKS &  
DEPARTMENTS OF WATER & SEWER  
NOVI CITY DPW OFFICES  
26300 DELWAL  
NOVI, MI 48375  
(248) 735-5640  
WWW.CITYOFNOVI.ORG



Map Print Date: November 14, 2008  
Map Author: Jeff Van Curler  
0 S 37.5 75 150 225  
FEET  
1 INCH = 95 FEET

**MAP INTERPRETATION NOTICE**

Map information depicted is not intended to replace or substitute for any official or primary source. This map was intended to meet National Map Accuracy Standards and use the most recent, accurate sources available to the people of the City of Novi. Boundary measurements and area calculations are approximate and should not be construed as survey measurements performed by a licensed Michigan Surveyor as defined in Michigan Public Act 132 of 1970 as amended. Please contact the City GIS Manager to confirm source and accuracy information related to this map.