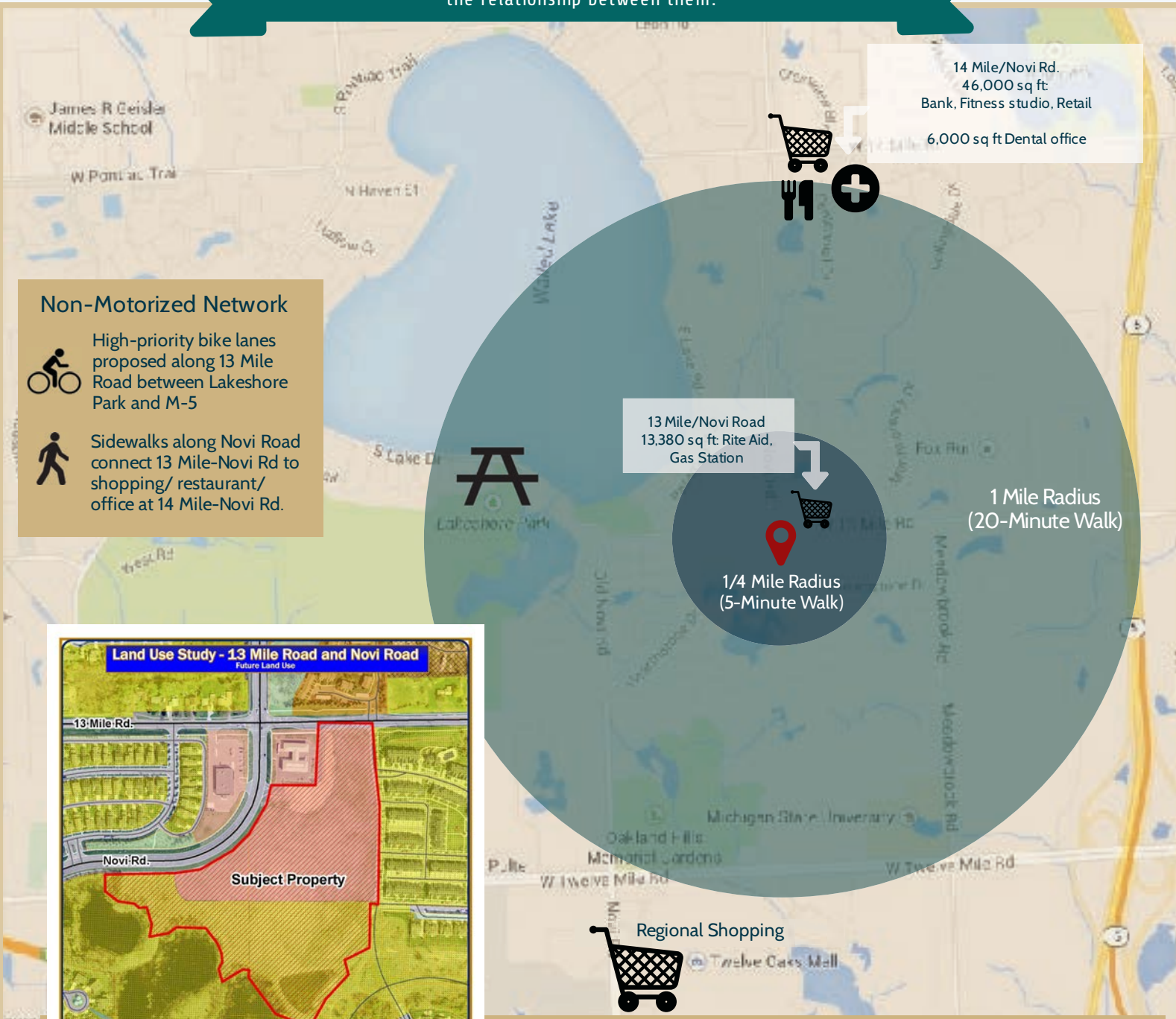




City of Novi: 13 Mile/Novi Road Study Area Land Use

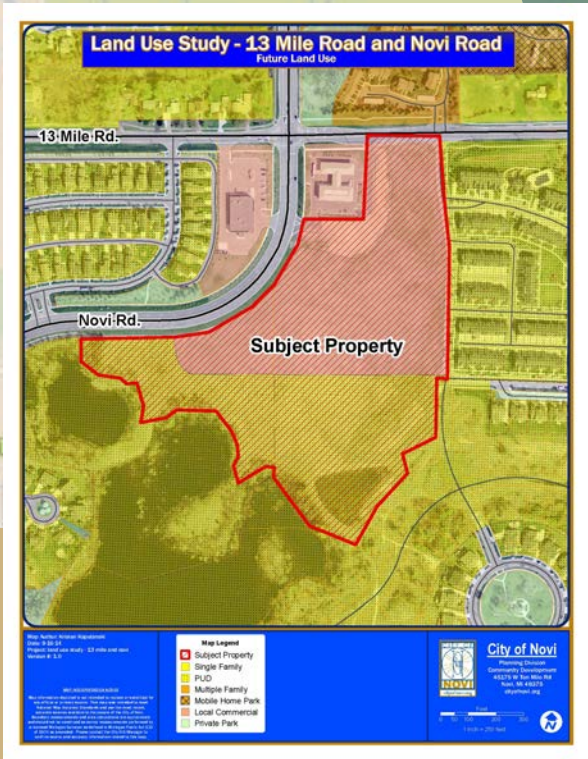
An overview of the composition of land uses in the study area and the relationship between them.



Non-Motorized Network

 High-priority bike lanes proposed along 13 Mile Road between Lakeshore Park and M-5

 Sidewalks along Novi Road connect 13 Mile-Novi Rd to shopping/ restaurant/ office at 14 Mile-Novi Rd.



The Future Land Use Map shows the subject property is designated "Local Commercial" with the surrounding area designated residential. The Master Plan identifies "local commercial" as lands designated for convenience shopping for residents within nearby neighborhoods. It includes retail, personal service establishments, and small offices