

MAPS

Novi Crossing SP10-06 with Rezoning 18.696

Location




Approximate Area of Development

Ten Mile Rd

Beck Rd

Map Author: Kristen Kapelanski
 Date: April 5, 2010
 Project: Novi Crossing SP10-06/Rezoning 18.696
 Version #: 1.0

Map Legend

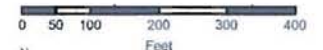
 Subject Property

MAP INTERPRETATION NOTICE

Map information depicted is not intended to replace or substitute for any official or primary source. This map was intended to meet National Map Accuracy Standards and use the most recent, accurate sources available to the people of the City of Novi. Boundary measurements and area calculations are approximate and should not be construed as survey measurements performed by a licensed Michigan Surveyor as defined in Michigan Public Act 132 of 1970 as amended. Please contact the City GIS Manager to confirm source and accuracy information related to this map.



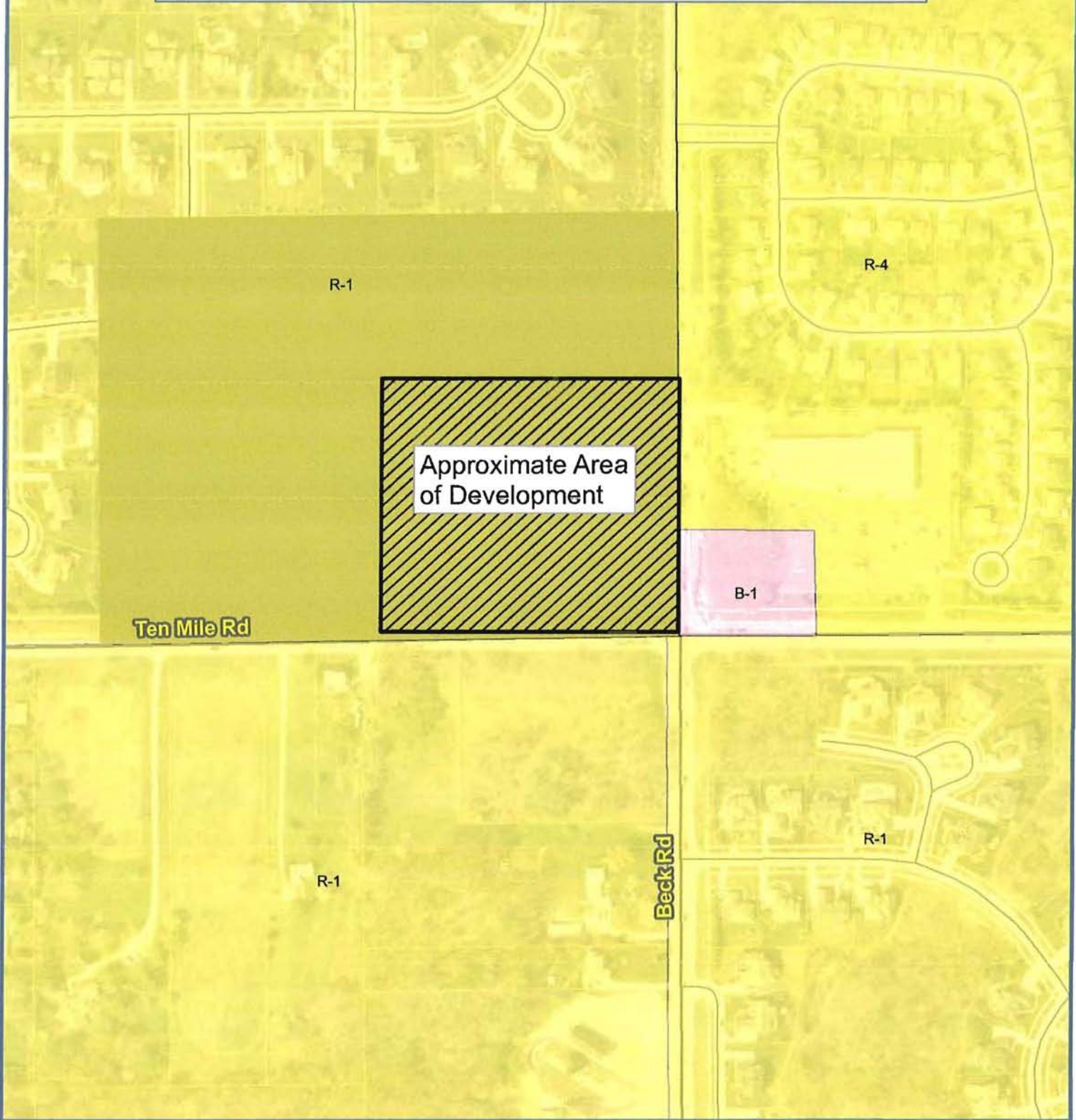
City of Novi
 Department Division
 45175 W Ten Mile Rd
 Novi, MI 48375
 cityofnovi.org



1 inch = 281 feet

Novi Crossing SP10-06 with Rezoning 18.696

Zoning



Map Author: Kristen Kapelanski
 Date: April 5, 2010
 Project: Novi Crossing SP10-06/Rezoning 18.696
 Version #: 1.0

Map Legend

-  Subject Property
-  R-1: One-Family Residential District
-  R-4: One-Family Residential District
-  B-1: Local Business District



City of Novi
 Department Division
 45175 W Ten Mile Rd
 Novi, MI 48375
 cityofnovi.org

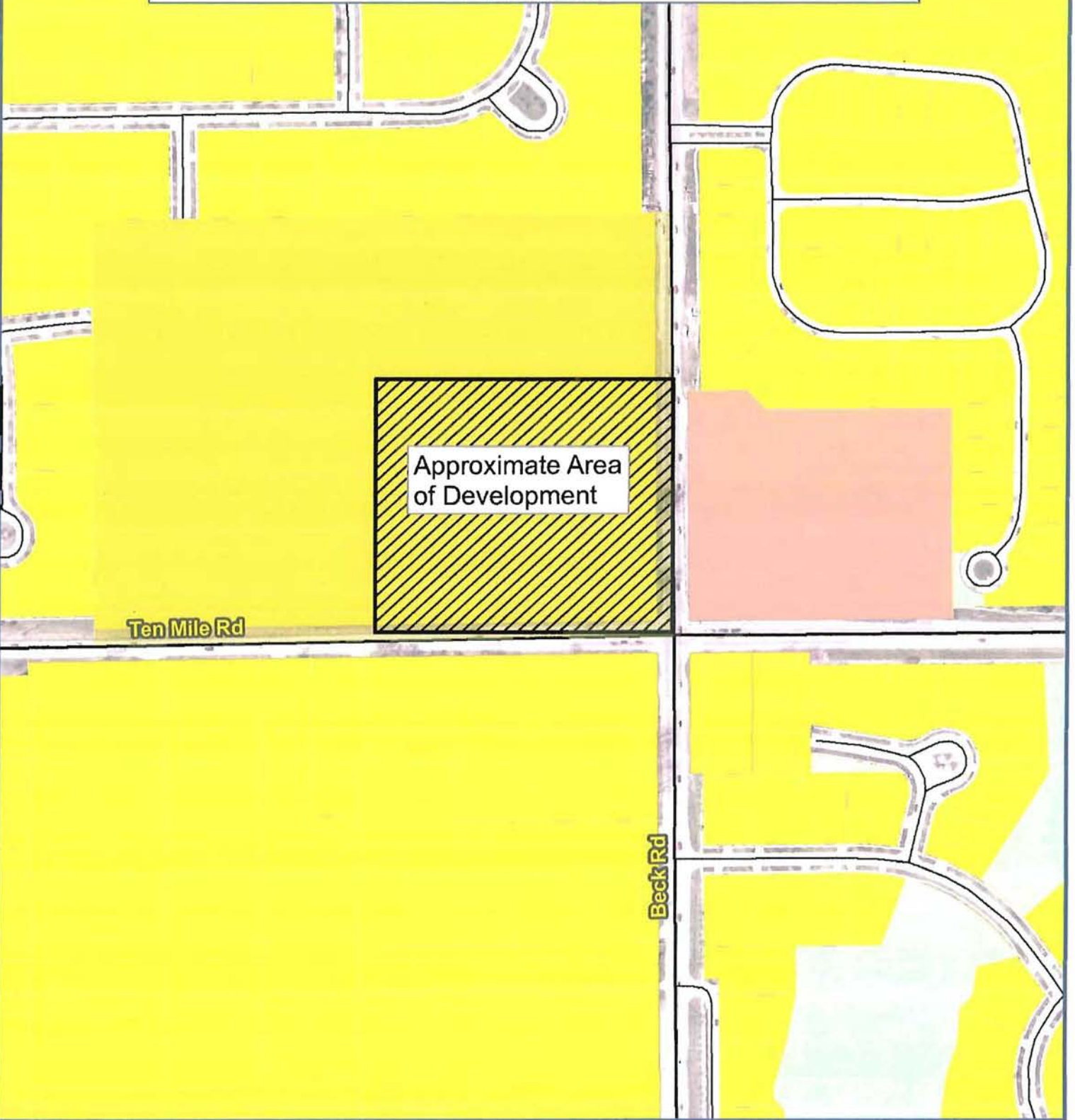


1 inch = 281 feet

MAP INTERPRETATION NOTICE
 Map information depicted is not intended to replace or substitute for any official or primary source. This map was intended to meet National Map Accuracy Standards and use the most recent, accurate sources available to the people of the City of Novi. Boundary measurements and area calculations are approximate and should not be construed as survey measurements performed by a licensed Michigan Surveyor as defined in Michigan Public Act 132 of 1970 as amended. Please contact the City GIS Manager to confirm source and accuracy information related to this map.

Novi Crossing SP10-06 with Rezoning 18.696

Future Land Use



Map Author: Kristen Kapelanski
 Date: April 5, 2010
 Project: Novi Crossing SP10-06/Rezoning 18.696
 Version #: 1.0

Map Legend

-  Subject Property
-  SINGLE FAMILY
-  LOCAL COMMERCIAL
-  PRIVATE PARK



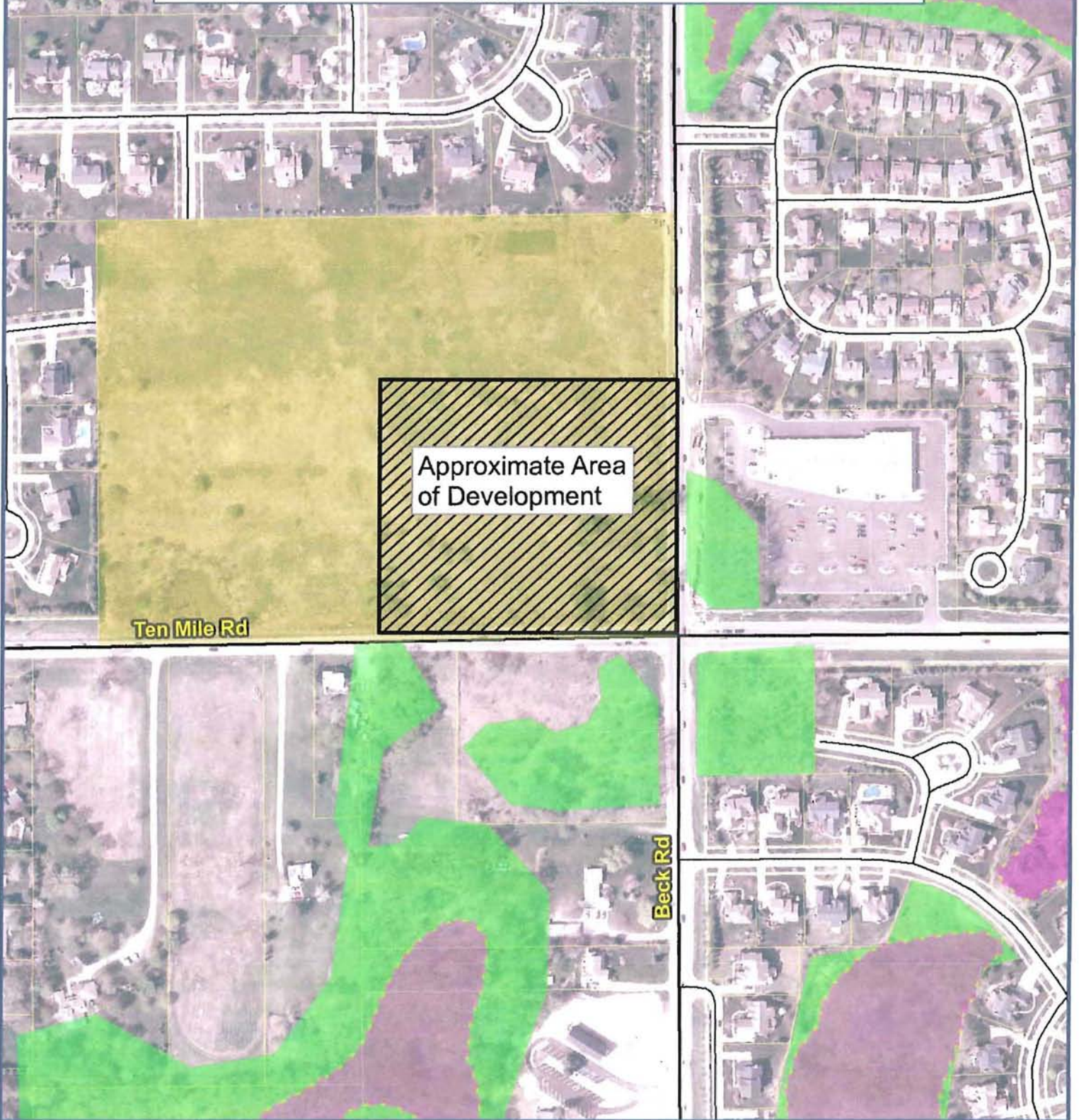
City of Novi
 Department Division
 45175 W Ten Mile Rd
 Novi, MI 48375
cityofnovi.org



MAP INTERPRETATION NOTICE
 Map information depicted is not intended to replace or substitute for any official or primary source. This map was intended to meet National Map Accuracy Standards and use the most recent, accurate sources available to the people of the City of Novi. Boundary measurements and area calculations are approximate and should not be construed as survey measurements performed by a licensed Michigan Surveyor as defined in Michigan Public Act 132 of 1970 as amended. Please contact the City GIS Manager to confirm source and accuracy information related to this map.

Novi Crossing SP10-06 with Rezoning 18.696

Natural Features



Map Author: Kristen Kapelanski
 Date: April 5, 2010
 Project: Novi Crossing SP10-06/Rezoning 18.696
 Version #: 1.0

Map Legend

-  Subject Property
-  Wetland Areas
-  Woodlands

MAP INTERPRETATION NOTICE

Map information depicted is not intended to replace or substitute for any official or primary source. This map was intended to meet National Map Accuracy Standards and use the most recent, accurate sources available to the people of the City of Novi. Boundary measurements and area calculations are approximate and should not be construed as survey measurements performed by a licensed Michigan Surveyor as defined in Michigan Public Act 132 of 1970 as amended. Please contact the City GIS Manager to confirm source and accuracy information related to this map.



City of Novi
 Department Division
 45175 W Ten Mile Rd
 Novi, MI 48375
 cityofnovi.org

