

This colorful butterfly can be the centerpiece of your yard, or just a nice accent to the side. A mix of annuals and perennials that all attract butterflies will bring joy to your day..

A bonus is the Wild Columbine at the center, which will also attract hummingbirds to your yard.

Spread wild strawberry plants throughout for a colorful groundcover whose delicious fruit you can eat.

PLANT LIST

| SYMBOL | QTY | SCIENTIFIC NAME | COMMON NAME | COLOR | BLOOM PERIOD | HEIGHT | USE | NOTES |
|--------|-----|------------------------------------|--------------------|--------------|--------------|--------|-------|--------------------|
| AM | 10 | Achillea millefolium | Yarrow | White | Jul-Aug | 1-2' | N | Native |
| AQ | 7 | Aquilegia canadensis | Columbine | Red/Yellow | May-Jul | 2-3' | LH, B | Native |
| AI | 12 | Asclepias incarnata | Swamp milkweed | Pink | Jul-Aug | 3-4' | LH, N | Native |
| CV | 8 | Coreopsis verticillata 'Moonbeam' | Moonbeam Coreopsis | Yellow | Jun-Aug | 1.5-2' | N | Non-native |
| RF | 14 | Rudbeckia fulgida | Orange Coneflower | Yellow | Aug-Oct | 2-3' | N | Native |
| SN | 8 | Salvia nemorosa | Meadow Sage | Blue, purple | May-Jul | 1-2' | N | Non-native |
| MS | 2 | Tithonia diversifolia/rotundifolia | Mexican sunflower | Orange | Jul-Sep | 4-6' | N | Non-native, annual |
| TO | 4 | Tradescantia ohiensis | Spiderwort | Blue | May-Jul | 2-3' | PP, N | Native |

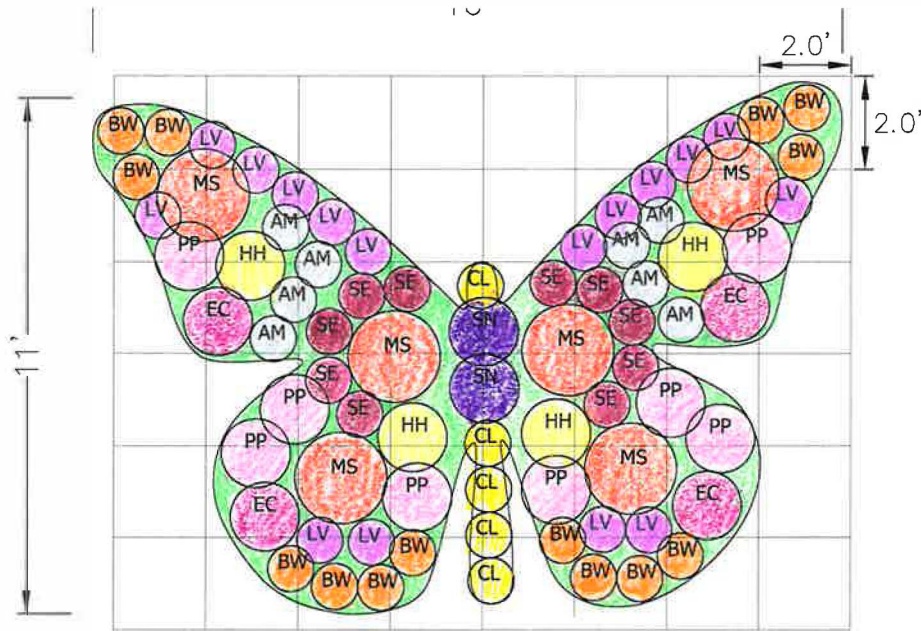
B: Birds eat the seeds
 LH: Larval host for certain butterfly species
 N: Provides nectar for butterflies
 PP: Supports pollinators and predatory insects

PROJECT: BUTTERFLY GARDENS
 SOIL MOISTURE: AVERAGE TO DRY
 SUNLIGHT: FULL SUN



SCALE: 1" = 4'





This colorful butterfly can be the centerpiece of your yard, or just a nice accent to the side. Drought-tolerant plants can reduce your maintenance worries, once you get them established.

A mix of small and large flowers form a bright pattern you can enjoy through the year.

PLANT LIST

| SYMBOL | QTY | SCIENTIFIC NAME | COMMON NAME | COLOR | BLOOM PERIOD | HEIGHT | USE | NOTES |
|--------|-----|------------------------------------|----------------------|--------------|--------------|---------|-------|--------------------|
| AM | 8 | Achillea millefolium | Yarrow | White | Jul-Aug | 1-2' | N | Native |
| BW | 14 | Asclepias tuberosa | Butterfly milkweed | Orange | Jun-Jul | 2-3' | LH, N | Native |
| CL | 5 | Coreopsis lanceolata | Sand coreopsis | Yellow | Jun-Aug | 12-24" | B, LB | Native |
| EC | 4 | Echinacea purpurea | Purple Coneflower | Purple | Jun-Aug | 3-4' | N | Native |
| HH | 4 | Heliopsis helianthoides | False sunflower | Yellow | Jul-Sep | 4-6' | N | Native |
| LV | 14 | Lavandula angustifolia 'Hidcote' | Hidcote lavender | Purple | Summer | 12"-18" | N | Non-native |
| PP | 8 | Phlox pilosa | Prairie phlox | Pink | May-Jul | 24" | N | Native |
| SN | 8 | Salvia nemorosa | Meadow Sage | Blue, purple | May-Jul | 1-2' | N | Non-native |
| SE | 10 | Sedum 'Herbstfreude' | Autumn Joy stonecrop | Pink | Aug-Oct | 2' | N | Non-native |
| MS | 6 | Tithonia diversifolia/rotundifolia | Mexican sunflower | Orange | Jul-Sep | 4-6' | N | Non-native, annual |

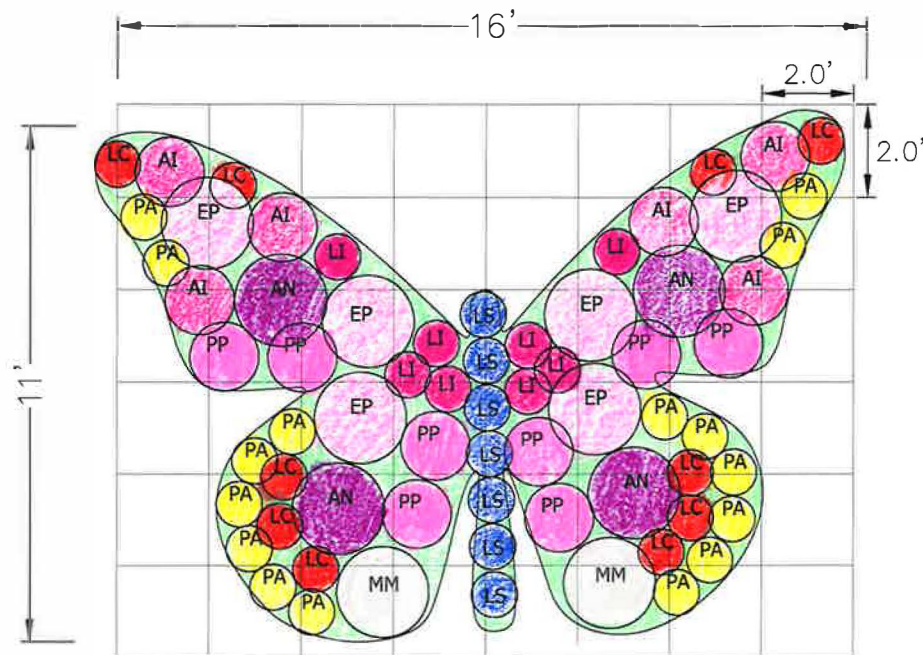
B: Birds eat the seeds
 LH: Larval host for certain butterfly species
 N: Provides nectar for butterflies

PROJECT: BUTTERFLY GARDENS
 SOIL MOISTURE: DRY
 SUNLIGHT: FULL SUN



SCALE: 1" = 4'





A sunny, moister area in your yard is all you'll need to make the flowers in this butterfly garden thrive.

From short blazing stars to bushy New England Asters, with Swamp Milkweeds all around, your yard will be the host to a myriad of butterflies throughout the year.

PLANT LIST

| SYMBOL | QTY | SCIENTIFIC NAME | COMMON NAME | COLOR | BLOOM PERIOD | HEIGHT | USE | NOTES |
|--------|-----|---------------------------------|---------------------------|--------|--------------|--------|-------|------------|
| AI | 6 | <i>Asclepias incarnata</i> | Swamp milkweed | Pink | Jul-Aug | 3-4' | LH, N | Native |
| AN | 4 | <i>Aster novae-angliae</i> | New England Aster | Purple | Aug-Sep | 3-6' | LH | Native |
| EP | 6 | <i>Eupatorium purpureum</i> | Joe-Pye Weed | Pink | Jul-Sep | 4-6' | N | Native |
| LI | 8 | <i>Liatris spicata</i> 'Kobold' | Kobold Marsh Blazing Star | Pink | Jul-Aug | 3-4' | N | Native |
| LC | 10 | <i>Lobelia cardinalis</i> | Cardinal flower | Red | Jul-Aug | 2-4' | B | Native |
| LS | 7 | <i>Lobelia siphilitica</i> | Blue lobelia | Blue | Jul-Sep | 1-3' | PP | Native |
| PA | 16 | <i>Packera aureus</i> | Golden ragwort | Yellow | May-Jun | 1-2' | N | Native |
| MM | 2 | <i>Pycnanthemum virginianum</i> | Mountain mint | White | Jul-Sep | 2-4' | N | Native |
| PP | 8 | <i>Phlox paniculata</i> 'Jeana' | Jeana Phlox | Pink | Summer | 4-5' | N | Non-native |

B: Birds eat the seeds
 LH: Larval host for certain butterfly species
 N: Provides nectar for butterflies
 PP: Attracts pollinators or predatory insects

PROJECT: BUTTERFLY GARDENS
 SOIL MOISTURE: MOIST
 SUNLIGHT: FULL SUN TO LIGHT SHADE



SCALE: 1" = 4'

