



CITY of NOVI CITY COUNCIL

Agenda Item 13
May 21, 2018

SUBJECT: Approval to award civil engineering services to AECOM for construction engineering services associated with the 2018 and 2019 Concrete Panel Replacement Program in the amount of \$120,357.62.

SUBMITTING DEPARTMENT: Department of Public Services, Engineering Division

CITY MANAGER APPROVAL:

EXPENDITURE REQUIRED	\$ 66,776.40	CPR 2018	
	<u>\$ 53,581.22</u>	CPR 2019	
	\$ 120,357.62	Total	
AMOUNT BUDGETED	\$ 347,543	CPR 2018 (FY 2017-18)	
	<u>\$ 1,400,000</u>	CPR 2018 (FY 2018-19)	
	\$ 1,747,543	Subtotal	
	\$ 42,000	CPR 2019 (FY 2017-18; 203 Fund)	
	\$ 850,000	CPR 2019 (FY 2019-20; 203 Fund)	
	<u>\$ 150,000</u>	CPR 2019 (FY 2019-20; 210 Fund)	
	\$ 1,042,000	Subtotal	
	\$ 2,789,543	Total	
	APPROPRIATION REQUIRED	N/A	
	LINE ITEM NUMBER	203-203.00-985.003 (ENG002 CPR 2018)	
	203-203.00-985.004 (ENG002 CPR 2019)		
	210-211.00-985.004 (ENG002 CPR 2019)		

BACKGROUND INFORMATION:

AECOM, engineering consultants to the City, helped develop a list of streets for the 2018 and 2019 Concrete Panel Replacement (CPR) Program. The program was advertised for a two-year contract to capture unit prices and lower the logistical costs of bidding, designing, and construction. This process allows the City flexibility with regards to the scheduling of different project areas. The Concrete Panel Replacement Program work includes concrete pavement repairs to the local road network in an effort to preserve the longevity of the existing roadways.

The roads selected for 2018 Concrete Panel Replacement Program are Bristol Circle, Mclean Court, Winnsborough Lane, Castlewood Drive, Havergale Street, Moorgate Street, Byrne Drive, portions of Cranbrooke Drive, Londonderry Drive, Franklin Mill Street, Sunrise Boulevard, Ladene Lane, Arbor Lane, Greentree Lane and Clover at Greentree Lane Roscommon Drive, Pellston Drive, Glen Haven Circle East, Broquet Road, and Onaway Drive.

The roads selected for the 2019 Concrete Panel Replacement Program are Waycroft Drive, Courtview Trail, Roxbury Drive, Carlisle Court, Cherry Hill Road, Park Ridge Court, portions of Cranbrooke Drive, and Nilan Drive.

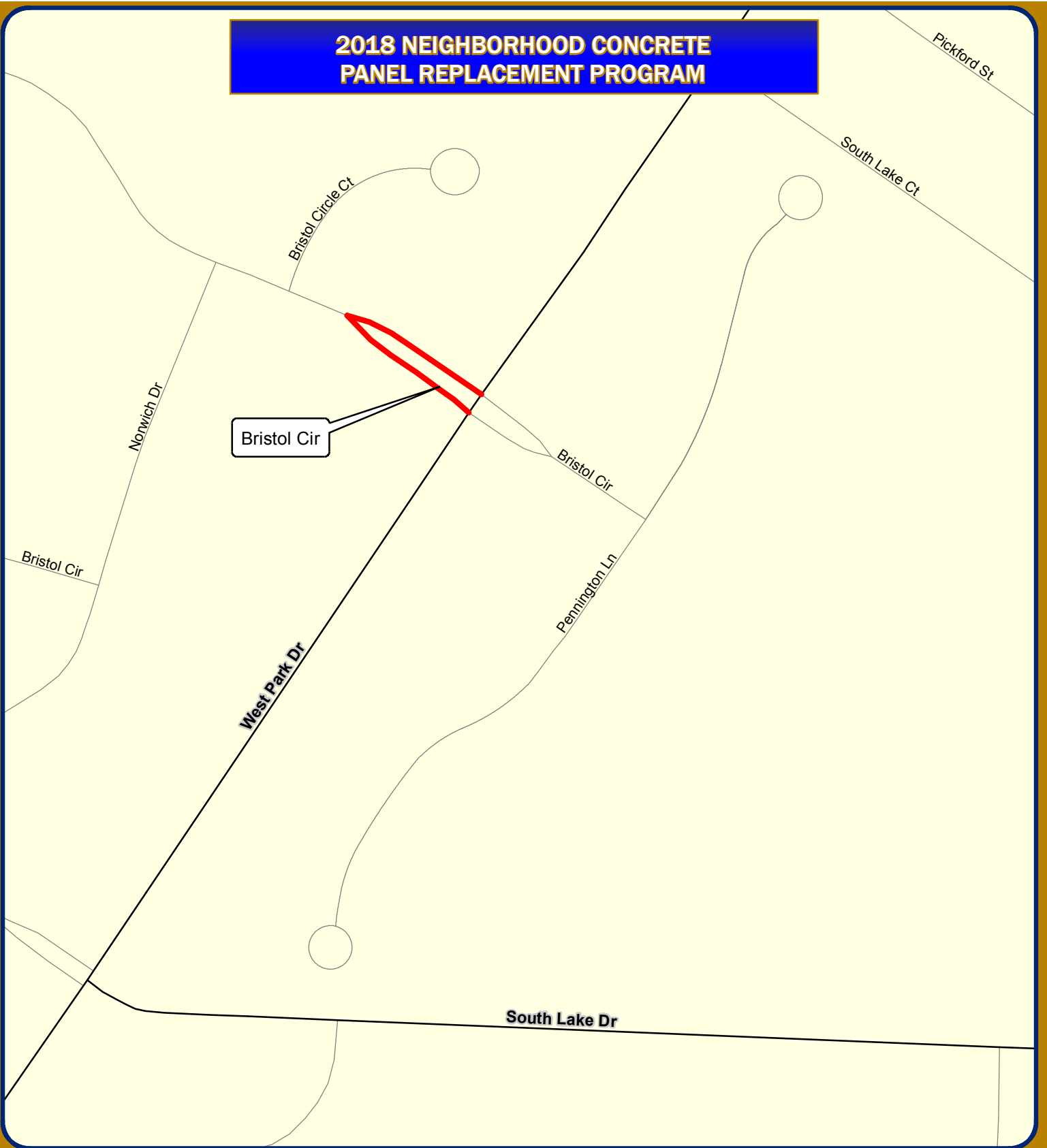
AECOM assisted the Engineering Division with developing the plans for this project. Staff advertised the plans for public bids on April 30, 2018. The construction phase engineering fees are determined using two components: 1) The contract administration fee, using the fee percentage in Exhibit B of the Agreement for Professional Engineering Services for Public Projects; 2) The construction inspection fee, using a cost per inspection (crew) day from Exhibit B of the consultant's agreement, multiplied by the number of days of inspection specified by the contractor.

The construction phase engineering fees for the project include a 2018 contract administration fee of \$35,276.40 (3.75% of the \$940,703.90 construction bid), a 2018 inspection fee of \$31,500 (\$700 per crew day, multiplied by the 45 days provided in the contractor's bid), a 2019 contract administration fee of \$25,581.22 (3.75% of the \$682,165.85 construction bid), and a 2019 inspection fee of \$28,000 (\$700 per crew day, multiplied by the 40 days provided in the contractor's bid) for a total fee of \$120,357.62.

The construction contract award is proposed for consideration elsewhere on this agenda. The 2018 selected roads will be substantially complete by fall 2018. The 2019 selected roads will be substantially complete by fall 2019.

RECOMMENDED ACTION: Approval to award civil engineering services to AECOM for construction engineering services associated with the 2018 and 2019 Concrete Panel Replacement Program in the amount of \$120,357.62.

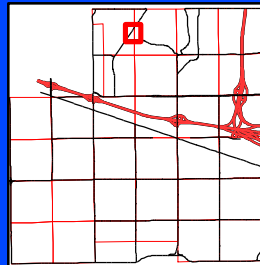
2018 NEIGHBORHOOD CONCRETE PANEL REPLACEMENT PROGRAM



Map Author: Joseph Akers
Date: May 10, 2018
Project: 2018 Road Construction
Version #: 1.3

Legend

 2018 Concrete Panel Replacement



City of Novi

Engineering Division
Department of Public Services
26300 Lee BeGole Drive
Novi, MI 48375
cityofnovi.org



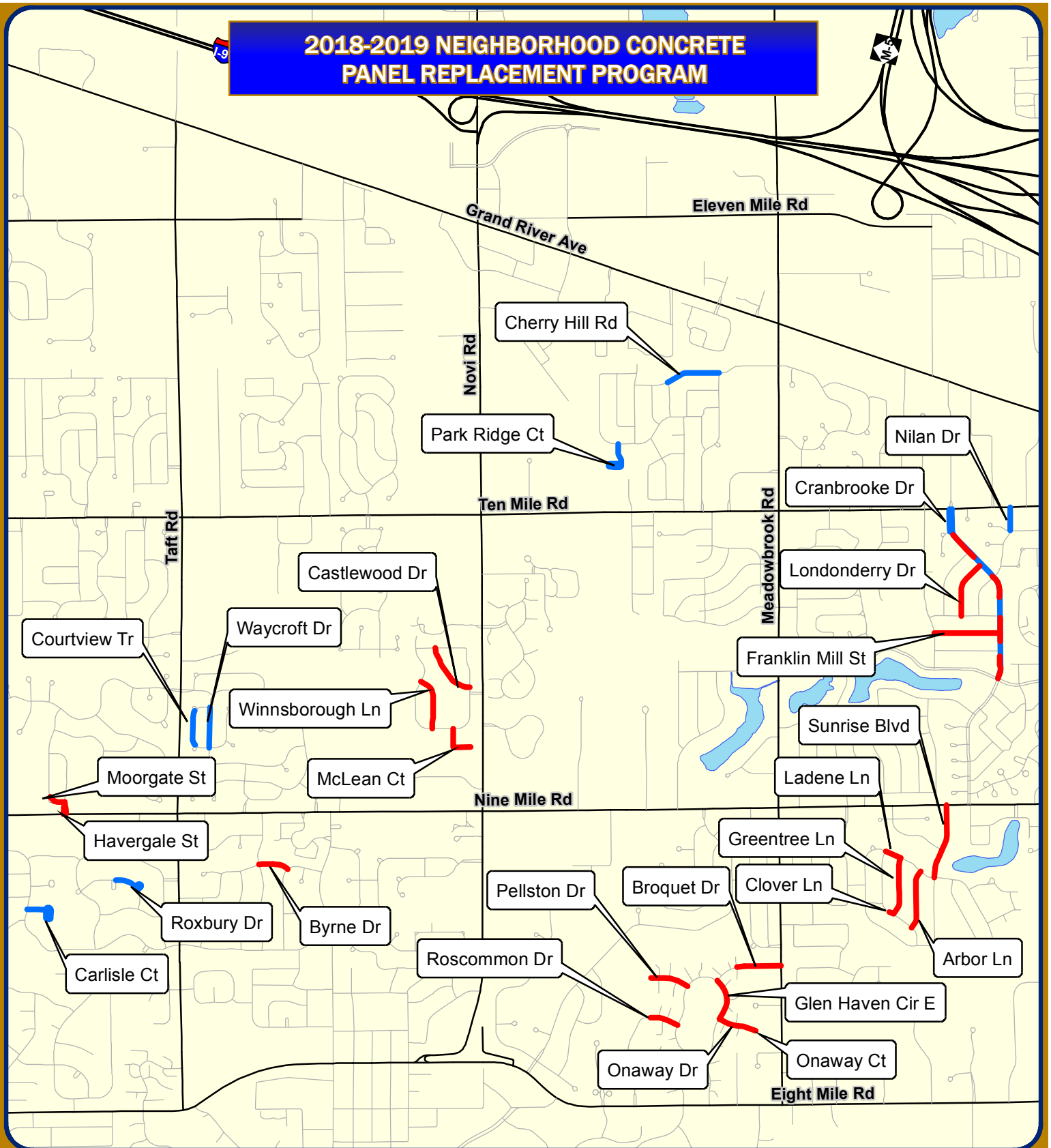
1 inch = 250 feet



MAP INTERPRETATION NOTICE

Map information depicted is not intended to replace or substitute for any official or primary source. This map was intended to meet National Map Accuracy Standards and use the most recent, accurate sources available to the people of the City of Novi. Boundary measurements and area calculations are approximate and should not be construed as survey measurements performed by a licensed Michigan Surveyor as defined in Michigan Public Act 132 of 1970 as amended. Please contact the City GIS Manager to confirm source and accuracy information related to this map.

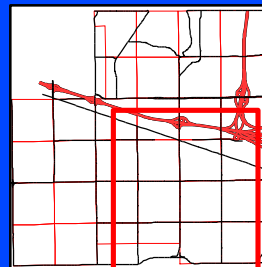
2018-2019 NEIGHBORHOOD CONCRETE PANEL REPLACEMENT PROGRAM



Map Author: Joseph Akers
 Date: May 10, 2018
 Project: 2018 Road Construction
 Version #: 1.3

Legend

- 2018 Concrete Panel Replacement
- 2019 Concrete Panel Replacement



City of Novi

Engineering Division
 Department of Public Services
 26300 Lee BeGole Drive
 Novi, MI 48375
cityofnovi.org



1 inch = 2,327 feet



MAP INTERPRETATION NOTICE

Map information depicted is not intended to replace or substitute for any official or primary source. This map was intended to meet National Map Accuracy Standards and use the most recent, accurate sources available to the people of the City of Novi. Boundary measurements and area calculations are approximate and should not be construed as survey measurements performed by a licensed Michigan Surveyor as defined in Michigan Public Act 132 of 1970 as amended. Please contact the City GIS Manager to confirm source and accuracy information related to this map.



May 16, 2018

Mr. Joseph Akers
City of Novi
Engineering Department
26300 Lee BeGole Dr
Novi, MI 48375

Reference: 2018-2019 Concrete Panel Replacement Program – Construction Engineering Services
AECOM Project Number 60568692

Dear Mr. Akers:

AECOM is pleased to provide the following proposal for Construction Engineer for the 2018-2019 Concrete Panel Replacement Program project in accordance with the Civil Engineering Master Services Agreement dated December 18, 2017.

Project Overview and Scope of Services

This project includes rehabilitation of concrete pavement. Our Construction Engineering services will include Construction Contract Administration and Inspection, as defined in the Civil Engineering Master Services Agreement.

Construction Cost and Proposed Fees

Construction Administration fee is based on a percentage of the as bid construction cost and the percentage used is based on the type of proposed work, as defined in the original Agreement. The fees for this project will be based on the “Rehabilitation” rates in the fee table.

Construction Inspection Services will be provided for \$700.00 per crew day as described in the original Agreement. The original budget will be that of the Crew Day bid amount of the awarded Contractor.

2018 CONSTRUCTION ADMINISTRATION:	$\$940,703.90 \times 3.75\% = \$35,276.40$
2018 CONSTRUCTION INSPECTION:	$\$700.00/\text{Crew Day} \times 45 \text{ Days} = \$31,500$
2019 CONSTRUCTION ADMINISTRATION:	$\$682,165.85 \times 3.75\% = \$25,581.22$
2019 CONSTRUCTION INSPECTION:	$\$700.00/\text{Crew Day} \times 40 \text{ Days} = \$28,000$
TOTAL:	<u>\$120,357.62</u>

Please feel free to contact me if you have any questions regarding this matter.

Sincerely,

Sean Kelsch, P.E. Project Manager