

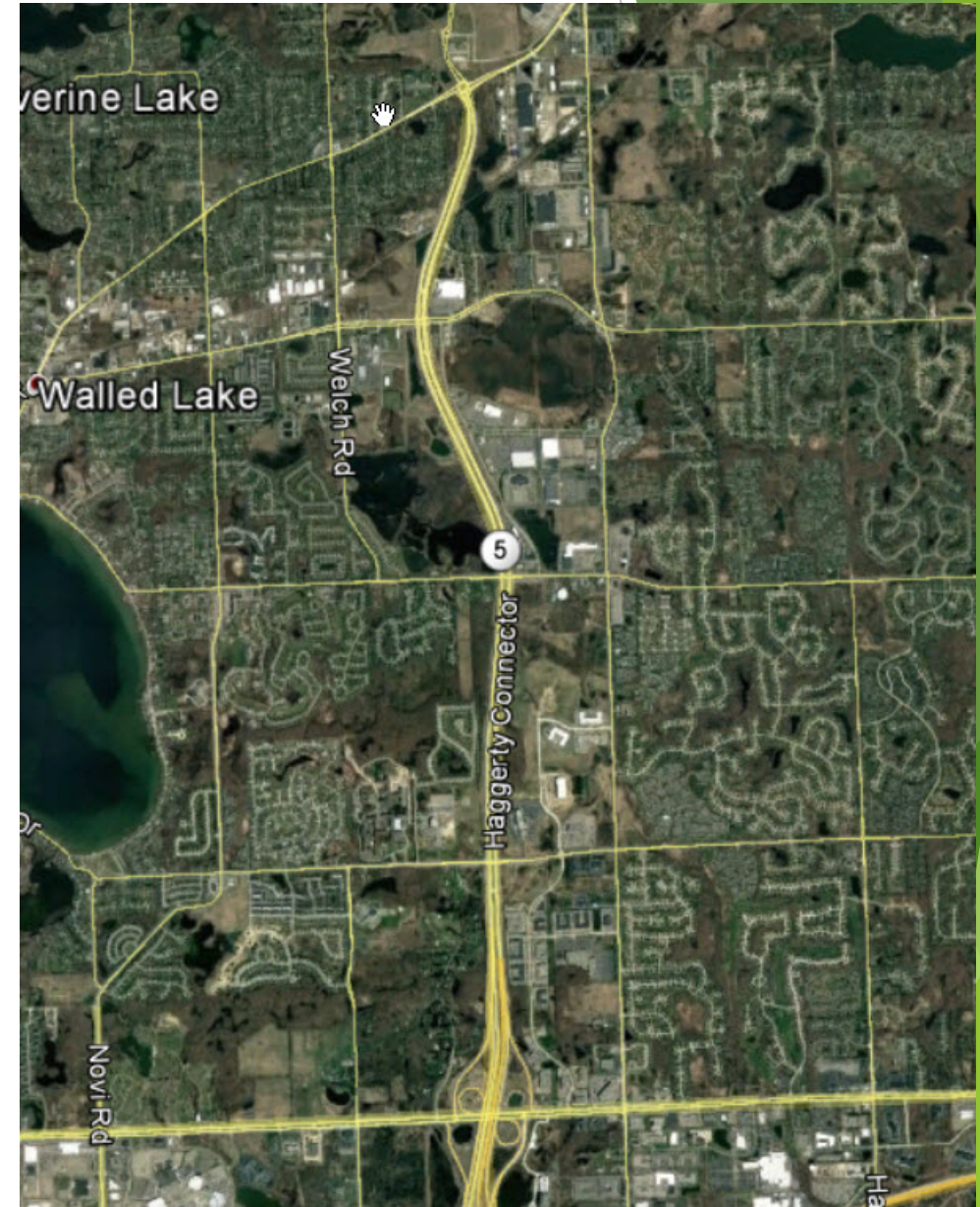
# M-5 Concrete Repair Project

Spring 2017



# Project Info

- ▶ **Limits:** 12 Mile to Pontiac Trail including ramps at 12 Mile and Connector Lanes
- ▶ **Work:** Concrete pavement repair, drainage structure repairs, and pavement markings
- ▶ **Estimated Cost:** \$3.46 million
- ▶ **Planned Schedule:**
  - ▶ May 1<sup>st</sup> - June 19<sup>th</sup>
- ▶ **Contractor:** Florence Cement



# Pavement History

- ▶ 12 Mile to 14 Mile portion of M-5
  - ▶ Originally constructed in 1996
  - ▶ Joint resealing and minor concrete pavement repair in 2007
  - ▶ Preventative Maintenance longitudinal repairs in 2014
- ▶ 14 Mile to Pontiac portion of M-5
  - ▶ Originally constructed in 2002
  - ▶ No repair work to date

# Maintenance of Traffic

Full closure, one bound at a time, approximately 3 weeks per bound

- ▶ Starting on the southbound side then switching to the northbound
- ▶ No saw cutting and pavement removal allowed at night south of 14 Mile Road
- ▶ 7 day work week planned

# Reasons for Closing M-5

- ▶ Minimizes impact to RCOC and local projects in the surrounding area
- ▶ Shortens construction duration minimizing length of impact to motorists
- ▶ Over \$1 million in cost savings
- ▶ Provides safer work zone for contractors and inspection



