

**Side View**

FWO#: 92648 Date: 11/19/08

Project: Stoneridge Office Park of Novi

Specifications:  
72" x 180" Commercial Medium Body  
Illuminated Aluminum Monolith

Quantity:  
1 Single Faced

Graphics Process:  
Push Thru Letters

Typography:  
12" & 6" Custom Font  
7" Antique Olive Bold Numbers

Graphics Color:  
White Lexan pushed through

Frames & Fixtures:  
N/A

Background Color:  
Top and Sides: MX 15 Satin Aluminum  
Cabinet: MX 16 Dusted Steel

Installation Method:  
Direct burial into concrete footings

Production Notes:

Drawings Shown In Proportion But Not To Scale

**asi. > modulex.**

Sign Type: **A • Aluminum Post & Panel**

Client: Shannon Development

P.O.: To Follow

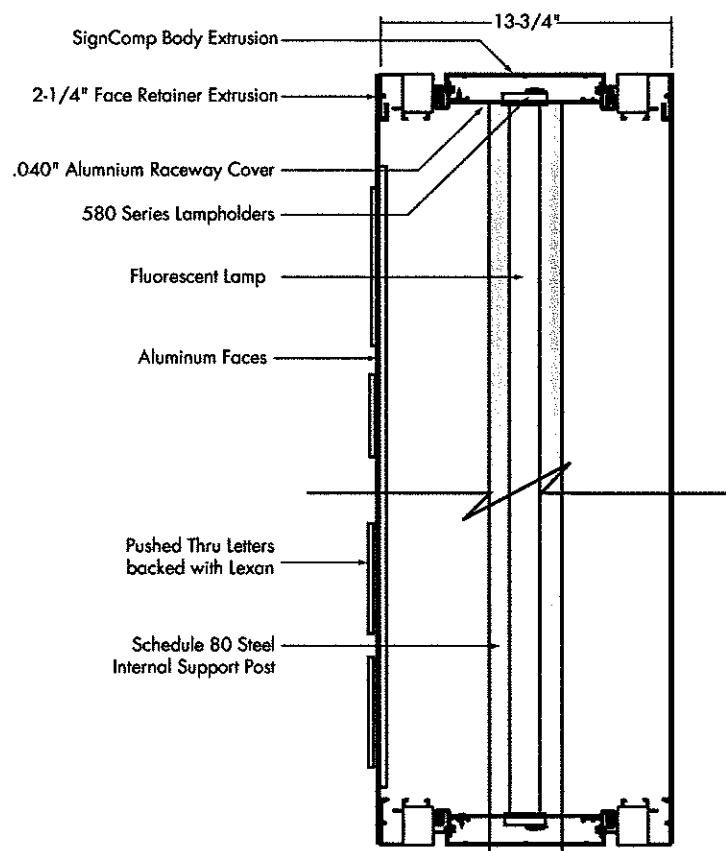
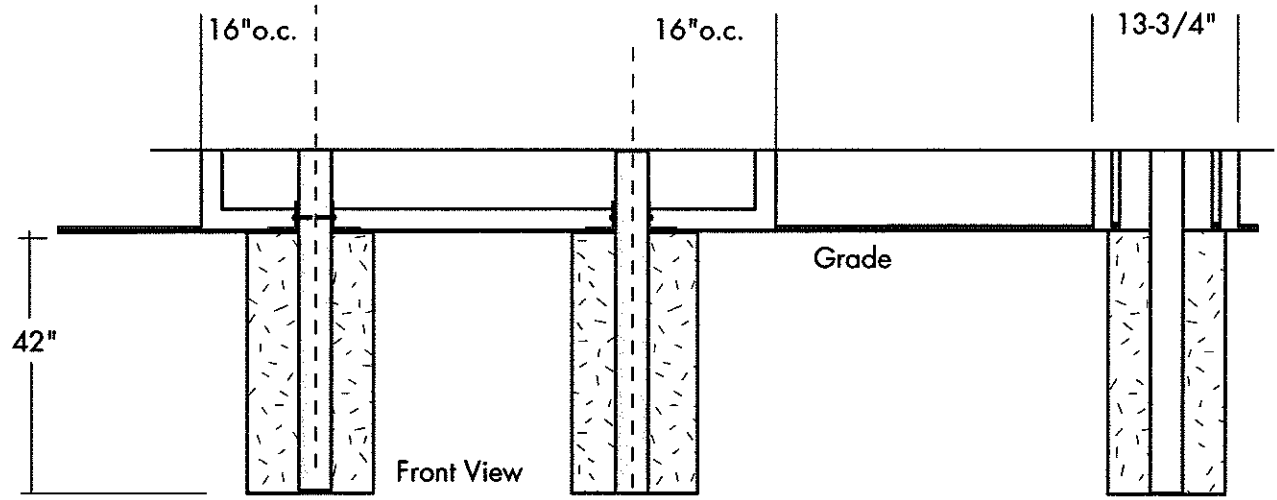
Contact: Pat Cavanaugh

Phone: 248/203-1234

Page 1 of PM: AE Proofed:



**Actual Copy:**  
(As Shown, Single Faced)



**Construction Detail**

**FWO#:** 92648

**Project:** Stoneridge

**Date:** 11/19/08 **Due:**

**Specifications:**  
72" x 180" Commercial Medium Body  
Illuminated Aluminum Monolith

**Quantity:**  
Mounting Detail

**Graphics Process:**

**Typography:**

**Colour:**

**Frames & Fixtures:**

**Painting:**

**Mounting:**

**Notes:**

**Client:** Shannon Development

**P.O.:** To Follow

**Contact:** Pat Cavanaugh

**Phone:** 248/203-1234

**Fax:**

2-1/4" Dual Frame  
& Cover On (1) Vertical Side  
For Sign Face Removal

**FWO#:** 92648

**Project:** StoneRidge

**Date:** 11/19/08 **Due:**

**Specifications:**

Illuminated Cabinet  
72" x 180" x 13-3/4"  
Lamping Detail

**Quantity:**

1 S/F

**Graphics Process:**

**Typography:**

**Colour:**

**Frames & Fixtures:**

**Painting:**

**Mounting:**

**Notes:**

Make standard ASI electrical label

**Client:** Shannon Development

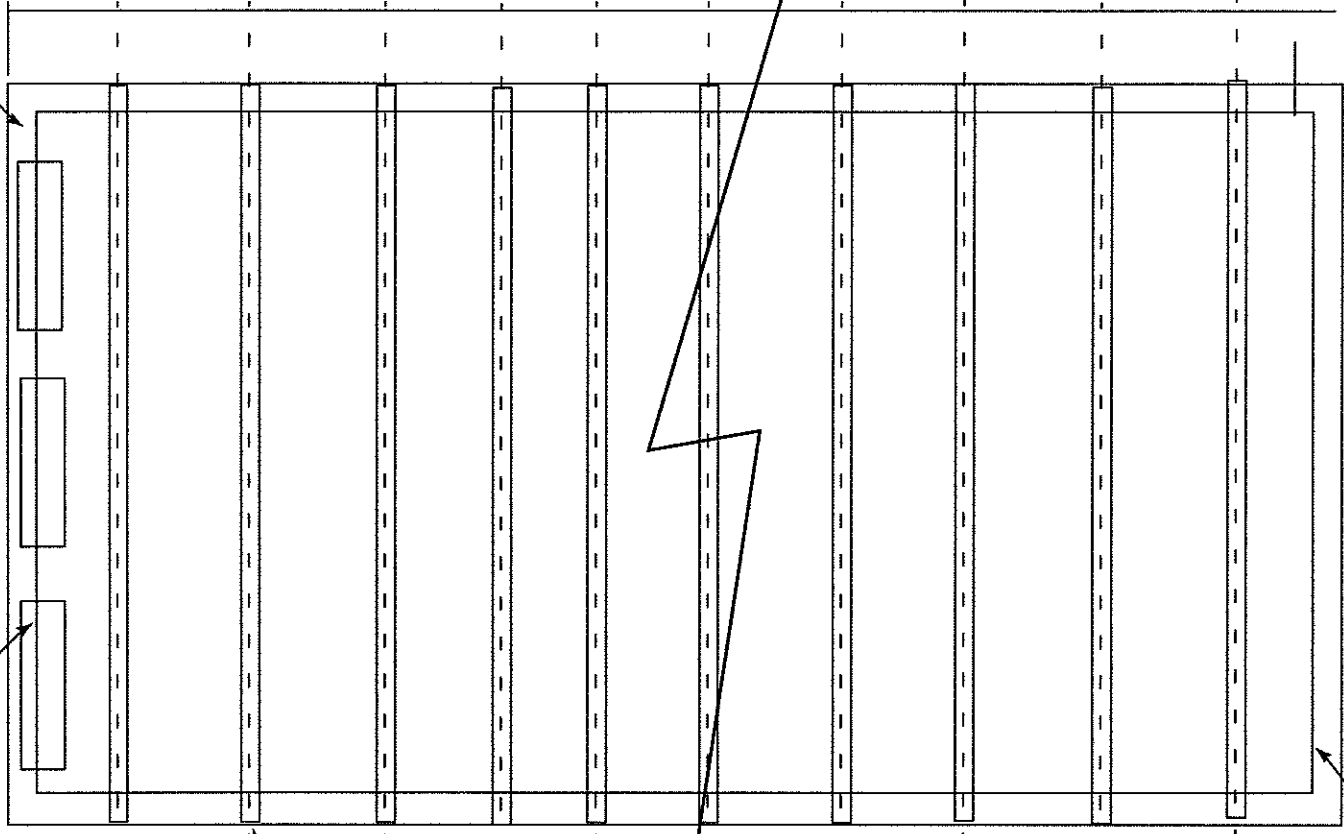
**P.O.:** To Follow

**Contact:** Pat Cavanaugh

**Phone:** 248/203-1234

**Fax:**

10" OC 10" OC 10" OC 10" OC 10" OC 10" OC 10" OC 10" OC 10" OC 10" OC



Advance Sign Ballasts  
(Qty. 3)

F60T12/CW/HO  
Fluorescent Lamps  
(Qty. 18)

2-1/4" Retainer  
(3) Sides Typ.

**Lamping Detail**

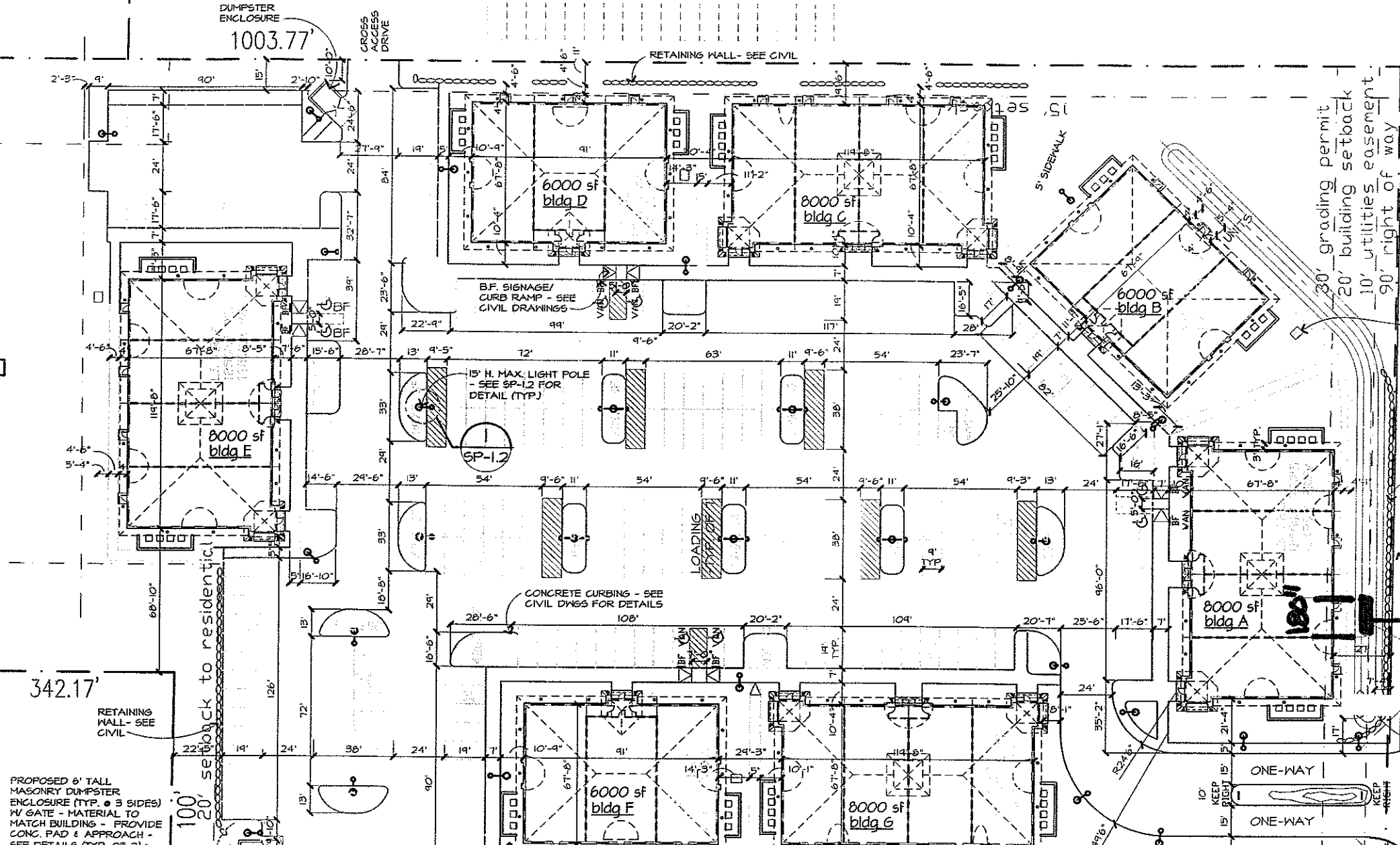
**asi** sign systems

No Scale

Page 3 of

Drwg.: AE Proof:

294'



PROPOSED 6' TALL MASONRY DUMPSTER ENCLOSURE (TYP. @ 3 SIDES) W/ GATE - MATERIAL TO MATCH BUILDING - PROVIDE CONC. PAD & APPROACH - SEE DETAILS (TYP. OF 2)

TWELVE MILE ROAD