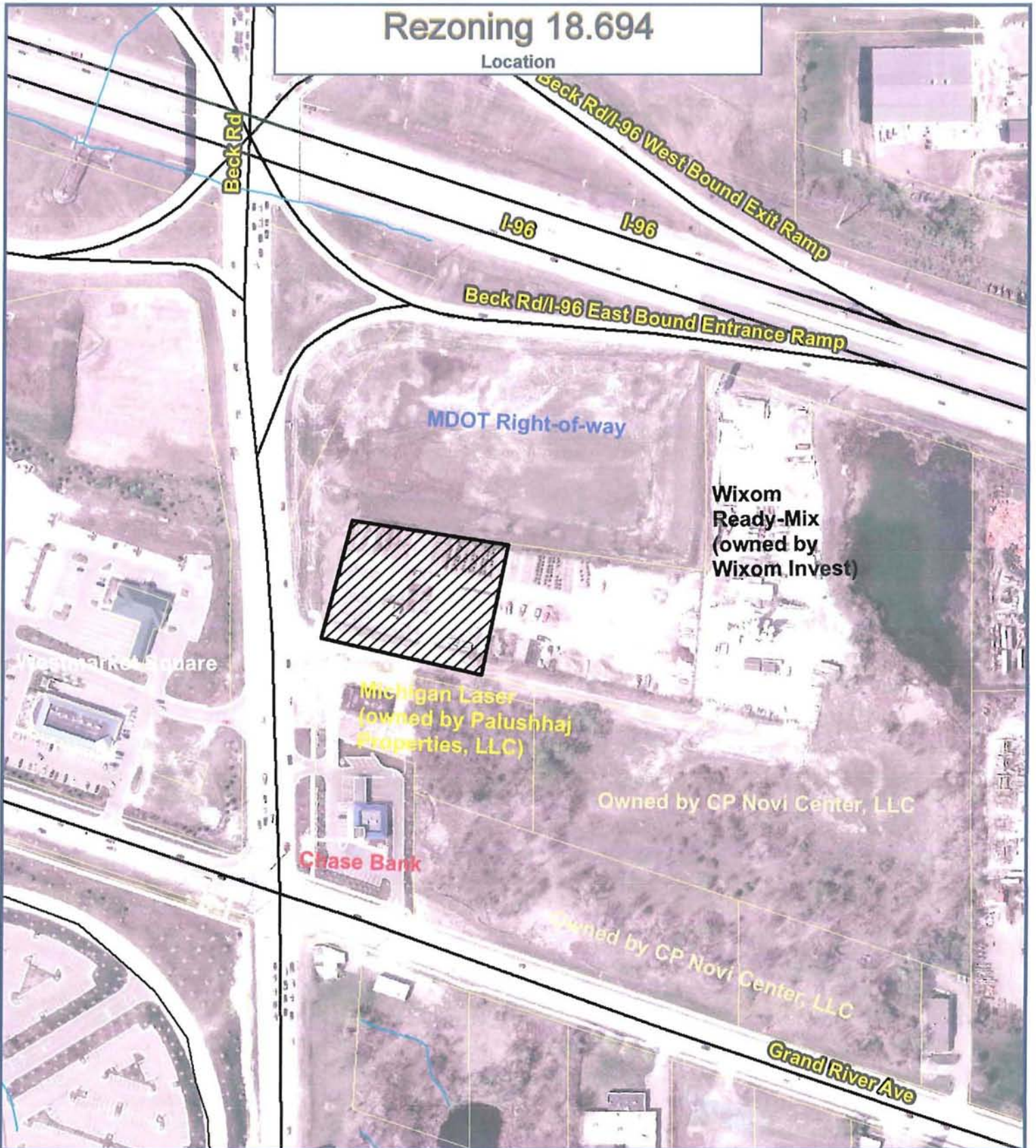


MAPS  
Location  
Zoning  
Future Land Use  
Natural Features


# Rezoning 18.694

Location



Map Author: Kristen Kapelanski  
Date: 03-10-10  
Project: Rezoning 18.694  
Version #: 1.1

### Map Legend

 Proposed Rezoning

#### MAP INTERPRETATION NOTICE

Map information depicted is not intended to replace or substitute for any official or primary source. This map was intended to meet National Map Accuracy Standards and use the most recent, accurate sources available to the people of the City of Novi. Boundary measurements and area calculations are approximate and should not be construed as survey measurements performed by a licensed Michigan Surveyor as defined in Michigan Public Act 132 of 1970 as amended. Please contact the City GIS Manager to confirm source and accuracy information related to this map.



City of Novi  
Department Division  
Department Name  
45175 W Ten Mile Rd  
Novi, MI 48375  
cityofnovi.org

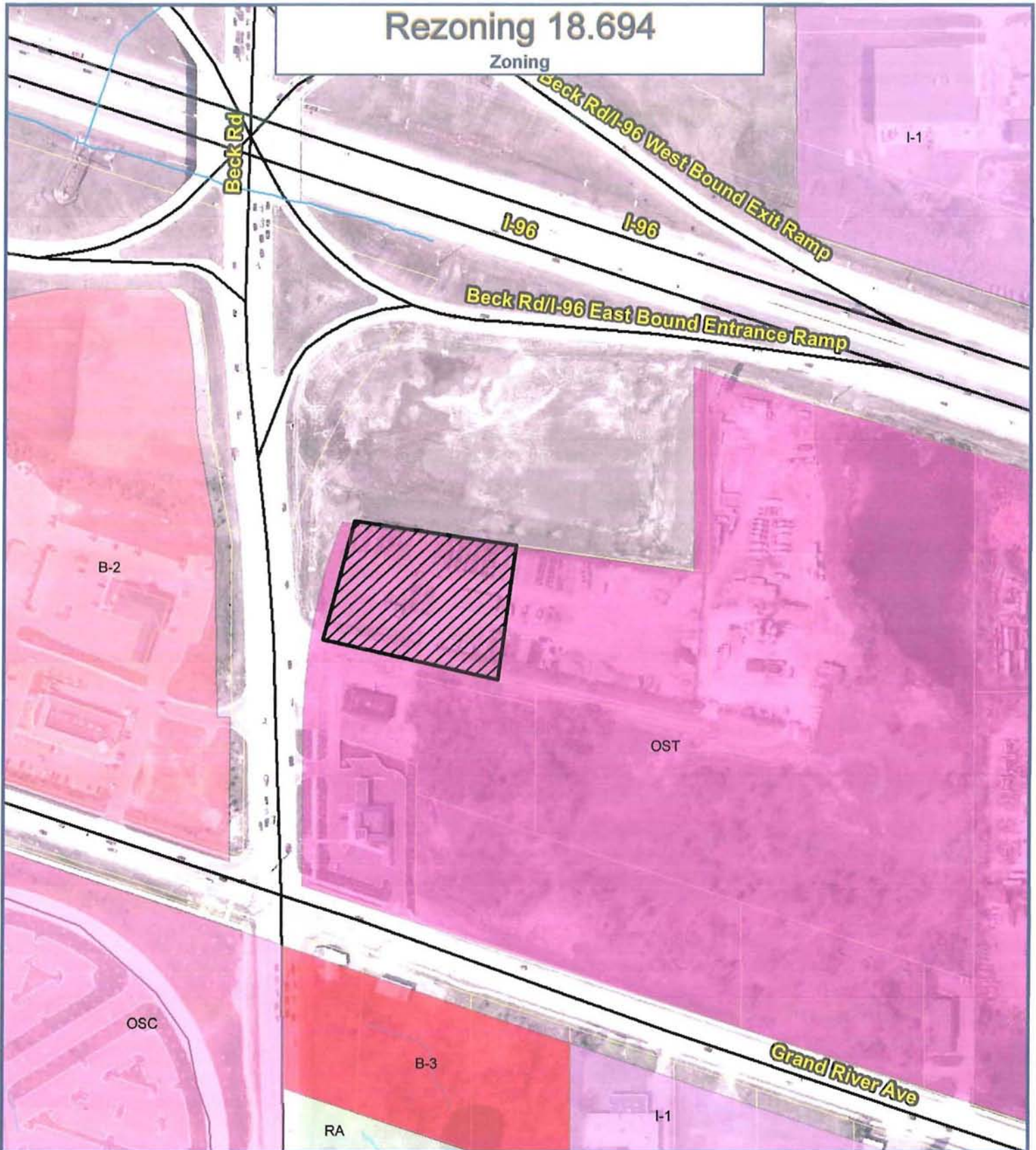
0 45 90 180 270 360  
Feet



1 inch = 248 feet

# Rezoning 18.694

Zoning



Map Author: Kristen Kapelanski  
 Date: 01-15-10  
 Project: Rezoning 18.694  
 Version #: 1.0

**MAP INTERPRETATION NOTICE**

Map information depicted is not intended to replace or substitute for any official or primary source. This map was intended to meet National Map Accuracy Standards and use the most recent, accurate sources available to the people of the City of Novi. Boundary measurements and area calculations are approximate and should not be construed as survey measurements performed by a licensed Michigan Surveyor as defined in Michigan Public Act 132 of 1970 as amended. Please contact the City GIS Manager to confirm source and accuracy information related to this map.

Map Legend

- R-A: Residential Acreage
- B-2: Community Business
- B-3: General Business
- I-1: Light Industrial
- OSC: Office Service Commercial
- OST: Office Service Technology
- Proposed Rezoning



**City of Novi**  
 Department Division  
 Department Name  
 45175 W Ten Mile Rd  
 Novi, MI 48375  
 cityofnovi.org



1 inch = 248 feet

# Rezoning 18.694

Future Land Use



Map Author: Kristen Kapelanski  
Date: 01-15-10  
Project: Rezoning 18.694  
Version #: 1.0


#### MAP INTERPRETATION NOTICE

Map information depicted is not intended to replace or substitute for any official or primary source. This map was intended to meet National Map Accuracy Standards and use the most recent, accurate sources available to the people of the City of Novi. Boundary measurements and area calculations are approximate and should not be construed as survey measurements performed by a licensed Michigan Surveyor as defined in Michigan Public Act 132 of 1970 as amended. Please contact the City GIS Manager to confirm source and accuracy information related to this map.

#### Map Legend

### Future Land Use

-  OFFICE
-  LOCAL COMMERCIAL

 Proposed Rezoning



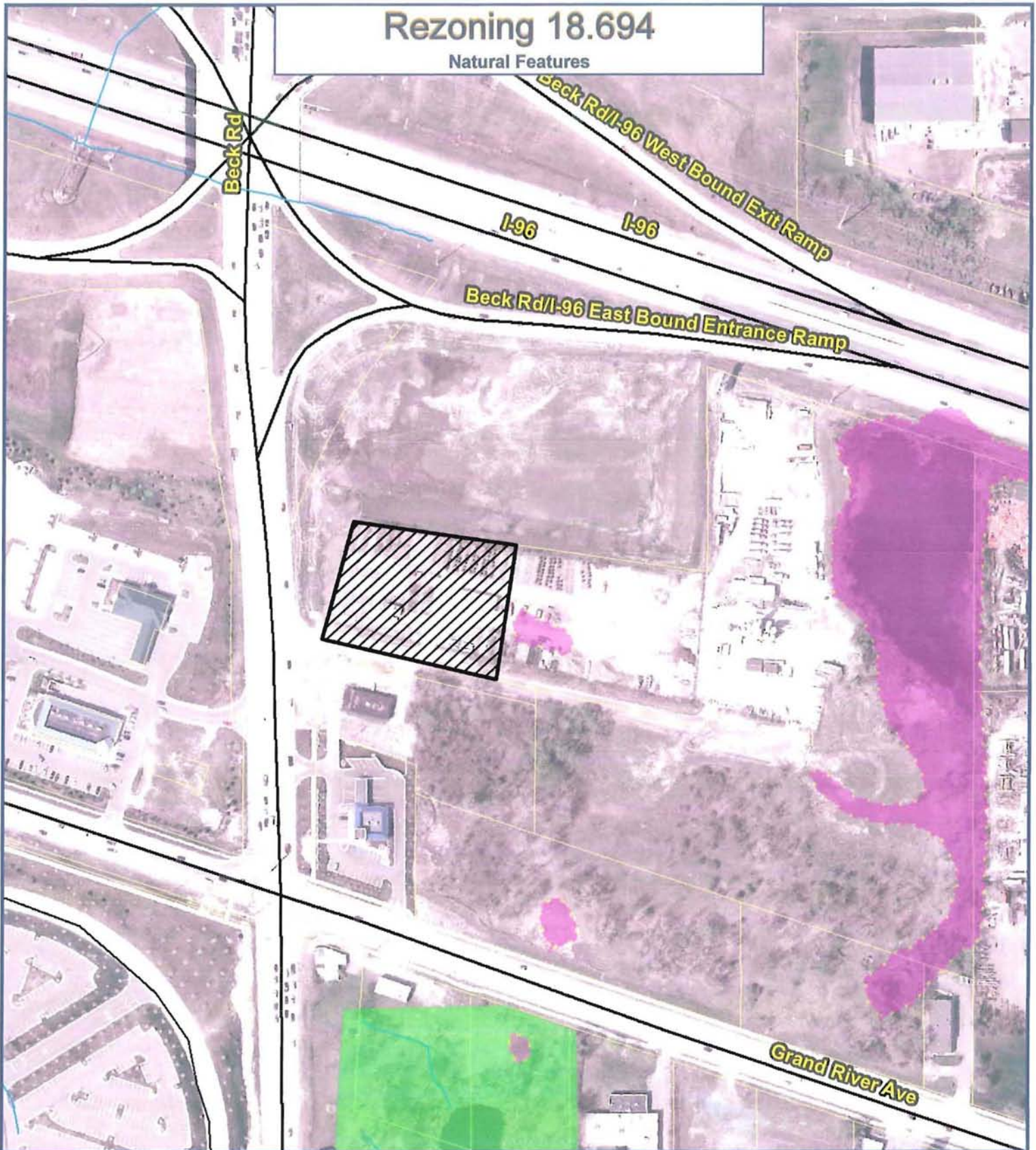
City of Novi  
Department Division  
45175 W Ten Mile Rd  
Novi, MI 48375  
cityofnovi.org



1 inch = 248 feet

# Rezoning 18.694

Natural Features



Map Author: Kristen Kapelanski  
Date: 01-15-10  
Project: Rezoning 18.694  
Version #: 1.0

### Map Legend

-  Wetland Areas
-  Woodlands
-  Proposed Rezoning

### MAP INTERPRETATION NOTICE

Map information depicted is not intended to replace or substitute for any official or primary source. This map was intended to meet National Map Accuracy Standards and use the most recent, accurate sources available to the people of this City of Novi. Boundary measurements and area calculations are approximate and should not be construed as survey measurements performed by a licensed Michigan Surveyor as defined in Michigan Public Act 132 of 1970 as amended. Please contact the City GIS Manager to confirm source and accuracy information related to this map.



**City of Novi**  
Department Division  
Department Name  
45175 W Ten Mile Rd  
Novi, MI 48375  
cityofnovi.org



1 inch = 248 feet