



cityofnovi.org

CITY of NOVI CITY COUNCIL

Agenda Item 3
November 10, 2008

SUBJECT: Approval to proceed with Phase 1 development of Fuerst Park and appropriate an additional \$147,000 using a portion of the additional savings from the prior year, as anticipated in the budget process, for the development of Phase 1A to be completed concurrently with Phase 1 by July 2009.

SUBMITTING DEPARTMENT: Parks, Recreation & Forestry Department

CITY MANAGER APPROVAL:

EXPENDITURE REQUIRED	\$147,000
AMOUNT BUDGETED	\$347,250; see budget amendment #3 on this agenda with \$147,000 additional allocation included
LINE ITEM NUMBER	101-265.00-971.100

BACKGROUND INFORMATION:

Following the approval of the November, 2007 bond measure for the construction of a new library, which is adjacent to the Fuerst Property, the City contracted with McKenna and Associates (MA), a consultant, to study the use of the Fuerst property, facilitate community input sessions, and prepare recommendations for property use, including the relocation of the Township Hall to the property. In doing so, the community was invited to participate in community input sessions. Approximately 85 citizens participated and an additional 55 internet surveys and 12 written surveys were submitted. This input indicated that the development of a new Community Recreation Center is a high priority, however, that the site was too small for such a project. The next two priorities were to restore the site and utilize it as a historic village or to redevelop the site (including restoration or demolition) of existing structures for community use. Regardless of the end-use, citizens want to see the site developed to be more accessible and usable for people of all ages.

On April 7, 2008, City Council approved the MA concept plan B and during the FY 08/09 budget process allocated \$347,250 for the below components to be included in the initial development (as included in MA concept plan B):

- Relocation and improvements (air conditioning, accessible restrooms) of Township Hall to the property
- Creation of a gateway plaza at the northwest corner of the property
- Development of pathways
- Landscaping
- Development of a small performing arts stage
- Removal of the existing structures

At the April 19, 2008 budget meeting, it was included in the motion that the City Council would allocate additional prior year savings after the audit process for the development of Fuerst Park. On August 25, 2008, the City retained Hamilton Anderson Associates (HAA) to refine the concept plan for the site, complete construction drawings and provide bid documents. HAA engaged City Council, Youth Council, Parks, Recreation and Forestry Commission, City and Library staff in a number of input opportunities for the purpose of gathering input regarding the desired components, thoughts and perceptions of the park.

The input received communicated the desire to leave much of the current topography and landscape as is. Walking paths and reflection areas were deemed important as were opportunities for connecting the park with the civic campus. Some subtle reference to the property's heritage should be included. An amphitheater that will lend itself to programming by the City, Library and Schools was given a high priority. The park should attract both adults and children even when no programming is taking place. Including sculpture was important to some, as was wireless connection given the proximity to the Library and High School. Given the visibility of the property and desire to increase usage, a commitment to quality over time was emphasized by many participants. Some Council members commented during the input sessions that \$1 million was a potential phased budget. Additional components could be funded by the Naming Rights Program.

At the September 22, 2008 City Council meeting, HAA presented the plan and Council provided comment on the concept plan (see the attached minutes). Following the presentation, the community was encouraged to provide additional input via an online survey, drop boxes at the Civic Center, Senior Center and Library, and by attending the October 9, 2008 Parks, Recreation & Forestry Commission meeting.

Citizen input received was supportive of the concept plan. Community members are in agreement that the park should retain its natural topography and provide areas for small gatherings, walking opportunities, and recreation programming. Many were pleased to learn about the barn foundations being incorporated and references to the site history via plantings and a sign that will feature the history of Novi and the Fuerst family. A small number of concerns heard include limited storage at Township Hall, Americans with Disabilities Act (ADA) compliance, potential for noise from the amphitheater, and the fire pit. The park is designed to be ADA compliant and the fire pit has since been removed from the concept plan. (Citizen input from the online survey, emails received by staff and minutes from the October 9, 2008 Parks, Recreation and Forestry Commission meeting were previously distributed to Council on October 30, 2008). Following public comment on October 9, 2008, the Parks, Recreation and Forestry Commission discussed the concept plan and voted unanimously to forward the plan to City Council for approval.

The following phases have been reviewed and are recommended in keeping with the history noted above. Specific elements, within or among phases, that City Council wishes to adjust would be appropriate to direct at the November 10, 2008 City Council meeting.

Phase 1 Development: The FY 08/09 budget of \$347,250 includes funds for the Township Hall relocation and improvements, structure removal, and Phase 1 Design and construction. As recommended, Phase 1 development consists of the completion of the amphitheater including flagstone paving as the stage material and around the Township Hall building, terraced seating, decorative concrete pathway from the parking lot and irrigation for plantings. The amphitheater will be ADA compliant and will seat up to 150 people. Following Council approval of the concept plan, Hamilton Anderson Associates (HAA) will create the drawings for the plan review process and the bid documents to begin Phase 1 development.

Justification: The amphitheater will provide an immediate opportunity for utilization by people of all ages (indicated important by citizens and City Council) and will be highly visible from both the Library and High school where thousands of people visit weekly. The Library and the Parks, Recreation and Forestry Department would begin programming as soon as it was complete, drawing people into the park. Additionally, the relocated Township Hall (November, 2008) will serve as the backdrop of the amphitheater and will provide the restrooms to accommodate audiences during programming and general park hours. With the restroom and air-conditioning enhancements and as part of the amphitheater, Township Hall is more conducive to hosting gatherings such as weddings, showers, etc. Together, the Township Hall relocation and the amphitheater complete a major component of the park.

Phase 1A Development: The development of Phase1A would require an additional \$147,000 be appropriated by City Council. Leftover funds from the audit process would be utilized, as discussed by Council at a budget session in April, 2008 (see the attached minutes). If Council appropriates the \$147,000, HAA would complete the construction drawings and bid documents for Phase 1A and it would be developed concurrently with Phase 1. Components of the phase would include additional connectivity throughout the park by completing the large circle pathway, highly visible “gateway” plantings at the corner of Ten Mile and Taft Roads, and connections to the amphitheater and park from the Library. In an effort to realize a cost-savings, the removal of shrubs and trees would be completed by City staff. Additionally, the tree plantings in this phase would be a component of the spring tree planting project and be funded from the tree fund. Lastly, the phase includes the earthwork for the entire site, irrigation to the planting sites and sleeving for future lighting underneath the pathways. These infrastructure necessities set the stage for future phases that would complete the remaining walks, create more visibility from the corner of Ten Mile and Taft Roads and create seating areas at the top of the hill.

Justification: Walking paths were deemed important during input sessions as were opportunities for connecting the park with the civic campus. Phase 1A incorporates the circle pathway and access points into the park from the Library and Taft Road, as well as welcoming landscaping at the corner; inviting citizens to use the park. Completing Phase 1 and Phase 1A concurrently results in a cost savings during the construction process and provides a more complete park for citizen utilization.

Future Phases: Phase 2 would complete the access points into the park (Ten Mile, Taft Rd., and Novi High School), as well as the remaining walks within the large circle pathway. The phase would include fieldstone walls at the corner and throughout the site, benches and large boulders for seating, additional landscaping, and lighting. Including the above mentioned items in Phase 2 allows for understanding of natural traffic patterns/usage in the park to determine the best locations of the components for use by citizens.

Phase 3 includes components that have the potential to be sponsored through the Novi Parks Foundation Naming Rights Program. These components could be included in the park upon the completion of Phase 2.

RECOMMENDED ACTION: Approval to proceed with Phase 1 development of Fuerst Park and appropriate an additional \$147,000 using a portion of the additional savings from the prior year, as anticipated in the budget process, for the development of Phase 1A to be completed concurrently with Phase 1 by July 2009.

	1	2	Y	N
Mayor Landry				
Mayor Pro Tem Capello				
Council Member Crawford				
Council Member Gatt				

	1	2	Y	N
Council Member Margolis				
Council Member Mutch				
Council Member Staudt				

Description	Qty	Units	Cost/Unit	Total
Phase 1 - Amphitheater and Township Hall Improvements *				
Earthwork Cut/Fill (amphitheater and T.H.)*	800	CY	\$20	\$16,000
Pump House foundation Removal	1	Allowance	\$3,000	\$3,000
Seeded lawn w/ 4" topsoil*	2,000	SY	\$2.50	\$5,000
Flagstone paving (around building)*	2,716	SF	\$20.00	\$54,320
Terraced Seating (amphitheater) 16" ht., 2' depth, with 12" maintenance edge *	400	LF	\$60	\$24,000
Concrete planter curb, 4" ht.*	220	LF	\$15	\$3,300
Concrete walks, 6' wide, decorative scoring and finishing*	630	SF	\$6	\$3,780
Shrubs (around Township Hall)	200	EA		\$0
Storm drainage (amphitheater and T.H.)*	1	Allowance	\$5,000	\$5,000
Irrigation System (amphitheater and T.H.)*	1	Allowance	\$1,500.00	\$1,500
			Subtotal	\$115,900
			20% contingency	\$23,180
			Construction Cost Phase 1	\$139,080

Phase 1a - Initial Walkways and Overall Infrastructure				
Earthwork Cut/Fill	1,500	CY	\$20	\$30,000
Concrete walks: large circle walk, connection to Library and corner, 6' wide, 4" thick, decorative scoring and finishing	9,460	SF	\$6	\$56,760
Seeded lawn w/ 4" stockpiled topsoil	8,000	SY	\$2	\$16,000
Tree Removal, 12" cal. or larger (by City)	12	EA		\$0
Shrub Removal (by City)	1	Lump Sum		\$0
Perennials at corner, No. 3 cont. (by City)	280	EA	\$20	\$5,600
Ornamental trees at corner, 2.5" caliper (by City)	46	EA		\$0
Perennials at barn foundations (by City or Community Group)	800	EA		\$0
Sleeving for future lighting	100	LF	\$10	\$1,000
Irrigation System	1	Allowance	\$2,000.00	\$2,000
			Subtotal	\$111,360
			20% contingency	\$22,272
			Construction Cost Phase 1a	\$133,632
			10% design and engineering fees	\$13,000
			Project Cost Phase 1a	\$146,632
			Total Phases 1 and 1a	\$285,712

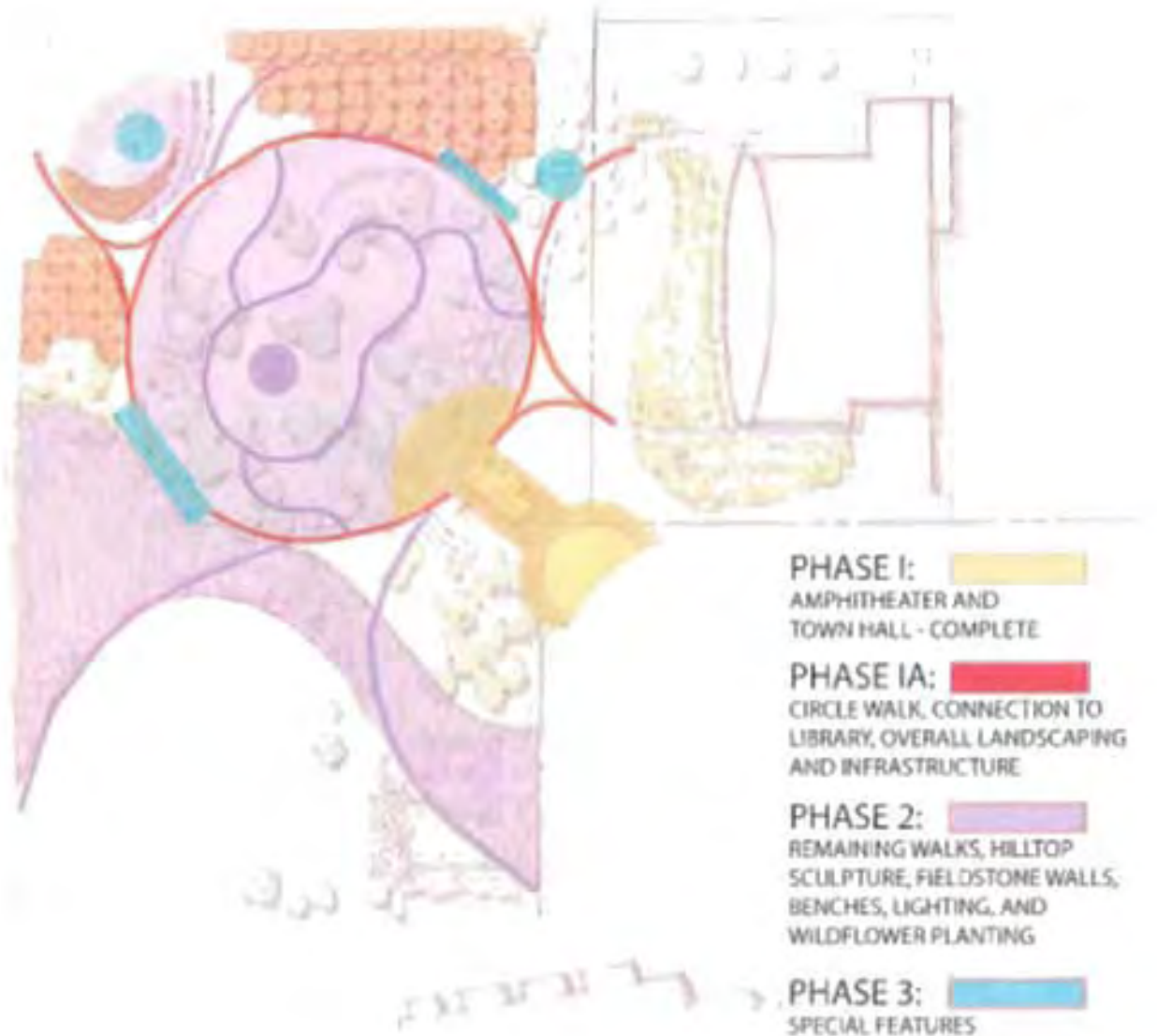
Phase 2 - Remaining Walks and Hilltop Improvements				
Concrete walks: remaining connections from south, 6' wide, 4" thick, decorative scoring and finishing	5,200	SF	\$6	\$31,200
Crushed granite paths, 4" depth on agg. base	5,000	SF	\$4	\$20,000
Fieldstone walls at corner (ave 30" ht., 12"-36" dia.)	350	LF	\$50	\$17,500
Fieldstone walls throughout site (ave 30" ht., 12"-36" dia.)	450	LF	\$50	\$22,500
Bench *	12	EA	\$3,000	\$36,000
Trash Receptacle*	3	EA	\$1,500	\$4,500
Large boulders at seating areas, 18"-36"	100	EA	\$200	\$20,000
Hilltop sculpture*	1	EA	\$300,000	\$300,000
Shrubs near barn foundations	100	EA	\$50	\$5,000
Wildflowers, seed and plugs 6' o.c.	1	AC	\$10,000	\$10,000
Decorative Lightpoles, 12' ht.	30	EA	\$3,500	\$105,000
Up lights at sculpture and Town Hall	12	EA	\$1,000	\$12,000
Sound/light system (mounted to light poles) at Town Hall	1	Allowance	\$10,000	\$10,000
			Subtotal	\$562,500
			20% contingency	\$112,500
			Construction Cost Phase 2	\$675,000
			geotechnical and soil testing	\$5,000
			10% design and engineering fees	\$67,500
			Project Cost Phase 2	\$747,500

Phase 3 - Additional Amenities				
Corner sculpture *	1	EA	\$150,000	\$150,000
Trellis *	100	LF	\$600	\$60,000
Grape Arbor *	50	LF	\$200	\$10,000
Play Sculpture *	1	Allowance	\$60,000	\$60,000
			Subtotal	\$280,000
			20% contingency	\$56,000
			Construction Cost Phase 3	\$336,000
			10% design and engineering fees	\$33,600
			Project Cost Phase 3	\$369,600
			Total	\$1,402,812

* Indicates donor possibility through naming rights or other program



Phasing Plan



[View Agenda for this meeting](#)

**SPECIAL MEETING OF THE COUNCIL OF THE CITY OF NOVI
SATURDAY, APRIL 19, 2008 AT 8:30 A.M.
COUNCIL CHAMBERS – NOVI CIVIC CENTER – 45175 W. TEN MILE ROAD**

CM-08-04-060 Moved by Gatt, seconded by Margolis; MOTION CARRIED:

To eliminate \$106,000 of the \$140,000 proposed for the study of Fire Station #1 and to put the \$106,000 towards Council's goal of landscaping and constructing pathways at the Fuerst Farm, and the remaining \$34,000 to be used to replace the apparatus room sound system at the existing Fire Station, to install the keypad security system and to upgrade electrical service at Fire Station #1. Also, to use half of the remaining forfeiture dollars to fund the Police digital video system and the other half coming from the General Fund, and that the \$82,500 that would be saved in this move would be put towards the Fuerst Farm and the goal of landscaping and constructing pathways. Also, when the audit was completed in October, at that time, Council would consider how much of those dollars would be put toward the Fuerst Farm. In addition, the funding, purchase and installation of an Interchangeable Message Sign for the Civic Center not to exceed \$50,000 and to be consistent with the new entryway signs. Also, that the

City of Novi Council Minutes - April 19, 2008 (Budget Meeting)

Page 3 of 13

remaining proposed items in the budget be approved as presented. In addition, that the resolution of a Fiscal Pledge to the Taxpayers be recognized as no longer binding and excluded from the adopted budget document.

DISCUSSION

Member Margolis thanked the staff for once again listening to Council and coming back with a great plan. She said she assumed what was being included in the motion was the fact that the staff came back with two estimates, one at \$17,726 that was available in the budget coming over from last year, and another \$90,000 that was a lowered estimate on another piece. She said so there was another \$107,000 there, which was included to be allocated to Fuerst Farm. Member Gatt said it was. She said Member Gatt had said that anything leftover after the audit in October be allocated to the Fuerst Farm and she asked for a friendly amendment that said at that time they would consider how much of that would be put toward the Fuerst Farm. Member Gatt agreed. She said she would fully support the motion and thought it a great compromise based on the information they had. Member Margolis agreed a longer turn around time was needed.

REGULAR MEETING OF THE COUNCIL OF THE CITY OF NOVI
MONDAY, SEPTEMBER 22, 2008 AT 7:00 P.M.
COUNCIL CHAMBERS - NOVI CIVIC CENTER - 45175 W. TEN MILE RD

PRESENTATIONS

1. Initial concept and elements for Fuerst Park prior to the Parks, Recreation and Forestry Commission public input meeting on October 9, 2008 - Lori Singleton, Hamilton Anderson

Ms. Singleton, Hamilton Anderson, said they had gathered input from Mr. Pearson, the Venture Team and City staff. They had also gathered input regarding preferences for the park and ideas they might want to move forward with and pulled that information into a concept plan to present this evening. She said during these conversations what they heard was a pretty unified sense that the park should be more passive and contemplative in its program with pathways, seating areas, informal play and family opportunities. She said there should be a small amphitheatre for small programmed events for about 150 people or so with some overflow that would accommodate larger events. Ms. Singleton said they looked at some imagery of what seat wall terraces might look like. It would not be fixed seating and not real formal but an amphitheatre that would perform that function throughout the year. There would also be a strong connection to the Civic Center campus, high school and the library and those connections could be made both physically and in terms of the character of the park and how it related to those other spaces. She said there might be some subtle references to the sites heritage but not recreations of historic elements, and also that the potential for public artwork was strong and would lend richness to the design.

Ms. Singleton said what linked all of the parts of the place together would be a really fluid path network. It would organize the park components and connected them to each other. A simple circular loop path would highlight the hill as the centerpiece of the park and created a more formal atmosphere on the grove on top of the hill; while having really informal and natural patterns throughout the site. She said character elements such as consistent details and materials, fieldstone walls and things that were already there to draw on would be continuous throughout the site so it felt like one place. The library, high school and Civic Center campus would have strong linkages for pedestrians coming in and they would happen at logical places on the corners where people were naturally drawn into the site.

Ms. Singleton said all of the design was thinking about the natural topography that was on the site now and using that as an asset. She said the existing tree canopy, the high point and knitting all of those spaces into that without having a real heavy handed approach to regarding and carving out of the site. At the corner of Taft and Ten Mile Roads, using land form, terracing and stone walls could set the tone for the park's character and the integration of a piece of public artwork there could really say that this was a civic place and park. It would do so in a way that was comfortable for people driving by and for people as they enter from the corner. She said orchard like plantings could kind of reference the sites farm heritage and also frame the view to the corner by having some vertical elements and the strength of those orchard plantings. They would use the fieldstone walls in a way that was very sculptural and not just practical and really start to sculpt the topography they had to work with on the corner and then big waves of plantings. She said nothing real small and residential but something grand enough that would make the kind of statement they were talking about at the corner, along with the grid of orchard trees to define that corner and incorporating public artwork as a splash and eye catching piece at the corner.

She said what they were calling the grove was at the top of the hill; so this was encircled by a major path and then within that large circle were smaller footpaths that would bring people up

the hill to the high point where they had located a major piece of public artwork. This would be on the site of the historic homestead and would be the centerpiece for those sitting and enjoying the top of the hill. The features around this major loop could include a trellis over the walkway to sit beneath along side the walk. Also, grape arbors backing to the orchard trees and fieldstone walls to sculpt the land and help to bring people up to the top of the slope and make that a more interesting and cultivated place. She said the existing image of the top of the hill where some of those large canopy trees were limbed way up, they would clear all of that open to view so while sitting on the hillside it could be seen from all directions.

Ms. Singleton said they had brought the amphitheatre and Township Hall together working with the existing topography this would be cut into that slope. She said there was a strong relationship to the library and the Township Hall would be facing the parking lot and its back side would be the back drop for the amphitheatre. She said people could sit at the slope, have a concert and actually have the building contain their view and provide any infrastructure in terms of sound, audio, electrical power, etc. linked through the building or run adjacent to the building. The Township Hall would be renovated with air conditioning and the addition of a restroom and the terrace seating took advantage of the existing topography. Ms. Singleton noted they thought the relationship to the library was strong for events that might be cross programmed between the library and the park. She said they would use bold splashes of plantings using plants that were appropriate to the era of the Township Hall and older farmsteads, such as a band of roses around the Township Hall itself.

Ms. Singleton said the Township Hall and the amphitheatre have a very close connection for ease of programming and access. The walkways from the building would tie directly into the paths network and provide a seamless link in the way one circulates around and through the library and into the park. The bio swale planned for the library would be naturalized subtly so there would be a blending from one space to the next and not a real clear delineation where the library ended and the park began. She said there would be opportunities between these two spaces where public artwork might be incorporated in and along the paths in a smaller way to address opportunities for play without building play equipment. It would be both a civic and public statement and an opportunity for children and families to enjoy.

She said the area adjacent to the high school was what they were calling the gardens. The biggest swath of plantings across this site could be a demonstration planting of wildflowers, switch grass, which was a bio fuel and could be planted really agriculturally in terms of furrows and rows. She said it could also be planted with sunflowers or sweet corn depending on how it was to be maintained and programmed; it would allude to the site's history without making a direct reference to it.

Ms. Singleton commented the barn foundations could be a really interesting opportunity, if they were in condition to be salvaged to create outdoor rooms near the high school for an opportunity for gathering and programming of the students. They could also be a place where community groups, local ethnic groups, garden clubs, etc. could come in and design and create really interesting garden environments that might not be in the same character as the rest of the park but could be interesting surprises. She said anything could happen in these spaces and wouldn't need to fit the formula of the rest of the park but could be surprising and different expressions of the community.

Ms. Singleton said they had added a community fire circle, which could be programmed by the City to kind of extend family and larger group opportunities into fall, winter and spring to come

together. There would be a scattering of large boulders or flattop stones where people could sit under the tree canopy to read a book, hang out, etc.

Mayor Pro Tem Capello thought they had done a good job on this. However, the one thing he was missing was the water features and he would really like to see those incorporated because they attracted the eye and made it look like there was activity there even when there wasn't. He thought the ideal would be to have a flowing little stream that ended up in a water feature.

Member Margolis said it looked in keeping with her vision of what that corner should look like. She felt it gave enough opportunity in different areas for Council to continue to develop the naming process that they had been doing with the foundation to get some of the areas sponsored by some of the ethnic groups in the community; there's lots of areas that could be developed separately. Member Margolis said she disagreed with the water feature but if there was going to be something, she would want it to be in very rural, such as some water over some rocks that looked like a little creek. She said she would be hesitant about something major as a water feature. She asked for a few more entryways off of Taft Road and Ten Mile so there were multiple ways to enter the site, if possible. She said she wanted to see people be able to enter from different areas so they knew it was very open and not a formal entrance at the corner. Member Margolis commented she would like input from the Youth Council on this and thought it would be a huge asset as Mayor Pro Tem Capello suggested.

Member Crawford commented she was pleased with the drawings that were in the Council packet and the way they used the topography and incorporated the fieldstone into it. She said it was much like she envisioned for that property and the maximized use of every space in a way that seemed more natural. She agreed with Member Margolis about the water feature and thought it didn't fit. She thought she would be open to something if it was like a sculpture. She said she would hope they could form a committee to help pick out the sculptures that might be in keeping with the theme of the land. She thought that was really important. Member Crawford asked if some of the paths would be for bikes and some for footpaths or would they all be the same kind of material. Ms. Singleton said the materials were the next step forward. However, the main circulation would be a harder surface and approaching the hilltop, that path network would be a much softer surface. Member Crawford said she was pleased with the plan.

Member Gatt stated he was also very pleased with everything presented. However, he would ask that there be some kind of historical monument or markings that told the story of the Fuerst sisters and what the property was and always would be.

Member Staudt thought Hamilton Anderson did a very nice job. He said they listened to the conversations that Council had with them. He said he liked the five access points coming from all different directions and all going to a central point on the property. He also liked integrating the amphitheatre with the Township Hall and felt it was a great economic use for that facility. He said if they had to vote on this plan today, he would be very excited about it.

Member Mutch said he would generally echo the comments of previous Council members. He said he was pleased with the plans he had seen so far. He commented that he saw a lot of the elements he had talked about in the meetings, especially the natural materials as well as the native landscaping. Member Mutch asked if they anticipated needing irrigation in certain areas to help maintain the plantings. Ms. Singleton said at this point that was still a bit gray in terms of the intensity of the planting. At this point, the ornamental plantings were focused at the

Town Hall and at the corner of which they could be very hardy plants. So, irrigation was not fully necessary and they could look at that as they moved further. She said there could even be a system in place that got everything established and phased out over time. She said depending on what the policy was in terms of maintaining irrigation on park land that would be something they would want to work with Council on. Ms. Singleton said the design was not water intensive at this point but could be made more so depending on the amount of landscaping Council would want to have. She said most of the trees shown on the plan, aside from the orchard plantings, were existing so there wasn't a big establishment period for that. She said the point was to minimize that impact and thought it was very doable to do that. Member Mutch said the southern portion of the property that was open now by the barns and could potentially be used for community events such as art fairs, etc. He said typically for those kinds of uses, people would be looking for electrical access for the various equipment they would bring with them. He asked if they would be looking at incorporating that kind of infrastructure into the park design. Ms. Singleton said events as infrastructure intensive as art fairs would not be something they had talked about. If that was something that became part of the program, then it would make sense to add outlets throughout that could be used, at a reasonable spacing. At this point, that was not something they considered but if it was added, they could look at doing something like that even if it meant in a first phase accommodating it by sleeving underneath the walks and getting conduit in to prepare for that in the future.

Member Mutch felt an art fair sounded like a great use of a more passive park property but then all those elements that go along with it could be a challenge to retrofit. He said if they were going to think about those uses, they needed to think about how to accommodate those as they were working through the design. Member Mutch said throughout the City they had tried to landscape the streetscape with street trees along all of the major roads. He said he would be interested in seeing them, as they worked on the landscaping along the perimeter of the property, incorporate street trees in the right-of-way and picking varieties and designs that were complimentary to the park. He said he would like to see the extension of the park design out to the street so that all of those elements worked together instead of leaving that for someone to figure out later on. Ms. Singleton said extending the park plan out to the street, especially at the corner, would mean more extending that orchard out than actually adding another layer of street trees along the edge. She said changing from a canopy tree to more of an under story tree and opening up at the corner with some broad under story landscaping might make a larger statement for the park. She asked if it needed to be street trees to take the landscape over to that point. Member Mutch said no, he thought the idea was to think about it as a whole instead of five years later the City Forester starts taking trees down. He commented it made more sense to do it all now and get it planned out now even if the trees weren't planted for five years, they would at least know when ready to do that what would work best with the design Ms. Singleton put together. He said at the top of the hill there was a very informal space and it was a pretty broad area. He was hoping to see something a little more formalized in terms of that use because he thought it did have potential. He said if someone wanted to take their lunch there, there were benches but no table. He thought that could be done that was fairly unobtrusive but provide a little more use for the area instead of just the park benches. He thought they had captured the various viewpoints that Council had brought to the table.

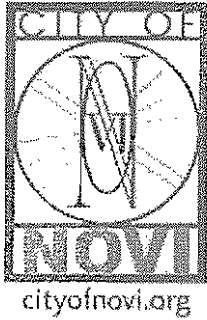
Mayor Landry said he thought they did an excellent job with this and that it would be a very usable space for all ages in the City. He said it was walkable, there were contemplated areas and places to sit in the shade. He said he really liked what they did with the Township Hall and thought it was really a focal point in the park and as a result it would enhance the use of the

Township Hall in this community. Mayor Landry said it was a part of the amphitheatre, it's the restroom facility and he thought more people would be drawn to it. He also liked what they did with the foundation for the barns, the fire circle and he was very excited. He said he looked forward to moving forward with this.

Member Staudt said there was conversation about the lighting and whether it would be decorative, overhead, etc. He commented he was looking forward to see what they were planning for that. He said he didn't have an opinion about it at this point but it seemed to be a considerable issue especially if they could do something that when they look up there at night it looked like something.

Member Margolis commented that she would like to see something that reminded people of the history, not just of this piece and the Fuersts, but the history of the City. She said she would really like to see that whether in signs, pictures or however it would work

MEMORANDUM



TO: RANDY AULER, PARKS, RECREATION & FORESTRY
DIRECTOR *R. Auler*

FROM: TRACIE RINGLE, COMMUNICATIONS & RESOURCE
DEVELOPMENT SUPERVISOR *Tracie Ringle*

SUBJECT: FUERST PARK CONCEPT PLAN, PHASING AND BUDGET

DATE: OCTOBER 28, 2008 *10/28/08*

Background

At the September 22, 2008 City Council meeting, Council members reviewed the conceptual plan and provided comments. Following the presentation, the community was encouraged to provide additional input via an online survey, drop boxes at the Civic Center, Senior Center and Library, and by attending the October 9, 2008 Parks, Recreation & Forestry Commission meeting. *To May calling Council Members For discussion at Nov 10 CC City.*

Citizen input received was supportive of the concept plan. Community members are in agreement that the park should retain its natural topography and provide areas for small gatherings, walking opportunities, and recreation programming. Many were pleased to learn about the barn foundations being incorporated and references to the site history via plantings and a sign that will feature the history of Novi and the Fuerst family. A small number of concerns heard include limited storage at Township Hall, Americans with Disabilities Act (ADA) compliance, potential for noise from the amphitheater, and the fire pit. The park is designed to be ADA compliant and the fire pit has since been removed from the concept plan. (Citizen input from the online survey and emails received by staff are attached).

Following public comment, the Parks, Recreation and Forestry Commission discussed the concept plan and voted unanimously to forward the plan to City Council for approval.

Phase 1 Development

Phase 1 development consists of the completion of the amphitheater. Components of this phase include flagstone paving as the stage material and around the Township Hall building, terraced seating, decorative concrete pathway from the parking lot and irrigation for plantings (see the attached drawings and images labeled Phase 1). The amphitheater will be ADA compliant and will seat up to 150 people. The FY 08/09 budget of \$347,250 includes funds for Township Hall relocation and improvements, structure removal, and Phase 1 design and construction.

Following Council approval of the concept plan, Hamilton Anderson Associates (HAA) will create the drawings for the plan review process and the bid documents to begin Phase 1 development. A recommendation of a construction firm will be provided to Council in April, 2009 and construction is targeted to begin mid-May with completion of Phase 1 by July 27, 2009.

Phase 1A Development

As anticipated in the budget process, the development of Phase 1A would require an additional \$147,000 be appropriated by City Council. Components of the phase would include additional connectivity throughout the park by completing the large circle pathway, entrance at the corner of Ten Mile and Taft Roads, and connections to the amphitheater and park from the Library. It also includes irrigation to the planting sites and sleeving for future lighting underneath the pathways. In an effort to realize a cost-savings, the removal of shrubs and trees would be completed by City staff. Additionally, the tree plantings in this phase would be a component of the spring tree planting project and be funded from the tree fund. If Council appropriated the \$147,000, HAA would complete the construction drawings and bid documents for Phase 1A and it would be developed concurrently with Phase 1, providing economy of scale and a more complete park for the public, especially as the highly anticipated new Library is adjacent to the project.)

Recommended Action

On November 10, 2008 staff will present a recommendation for the approval of the Fuerst Park conceptual plan, approval to proceed with Phase 1 development and appropriate an additional \$147,000 for the development of Phase 1A. The additional dollars would be funded from the General Fund-Fund Balance based on Council discussion during the April 19, 2008 budget session in which it was indicated that any funds leftover from the audit would be put toward the Fuerst project.)

Update - Barn Removal

A contract for the removal of the south and east barns was awarded to Mr. Wittbrodt (Gael, LLC) in July, 2008. Gael, LLC will be relocating the barns to his property in Farmington Hills. Gael, LLC has provided the proper insurance and bonds and has started the interior work on the barns. The project is on target and the timeline is below: ✓

- **September 1 - October 30, 2008** - Interior work of both barns (marking and coding of pieces to assist with reconstruction)
- **January 1, 2009** - Begin exterior work of the barns
- **February 28, 2009** - Completion of the removal of both the east and south barns

Update - Township Hall Relocation

A contract for the relocation of Township Hall and the building of the restroom addition was awarded to Biondo Design and Build, LLC on October 6, 2008. Work on the site has begun and the timeline is below: ✓

- **Week of October 27, 2008** - Site clearing, excavate the new site foundation
- **Week of November 3, 2008** - Pour foundation and site work
- **Week of November 10, 2008** - Relocate Township Hall-contingent upon proper curing of foundation (weather permitting), fill existing foundation and restore site.

Description	Qty	Units	Cost/Unit	Total
Phase 1 - Amphitheater and Township Hall Improvements *				
Earthwork Cut/Fill (amphitheater and T.H.)*	800	CY	\$20	\$16,000
Pump House foundation Removal	1	Allowance	\$3,000	\$3,000
Seeded lawn w/ 4" topsoil*	2,000	SY	\$2.50	\$5,000
Flagstone paving (around building)*	2,716	SF	\$20.00	\$54,320
Terraced Seating (amphitheater) 16" ht., 2' depth, with 12" maintenance edge *	400	LF	\$60	\$24,000
Concrete planter curb, 4" ht.*	220	LF	\$15	\$3,300
Concrete walks, 6' wide, decorative scoring and finishing*	630	SF	\$6	\$3,780
Shrubs (around Township Hall)	200	EA		\$0
Storm drainage (amphitheater and T.H.)*	1	Allowance	\$5,000	\$5,000
Irrigation System (amphitheater and T.H.)*	1	Allowance	\$1,500.00	\$1,500
			Subtotal	\$115,900
			20% contingency	\$23,180
			Construction Cost Phase 1	\$139,080

Phase 1a - Initial Walkways and Overall Infrastructure				
Earthwork Cut/Fill	1,500	CY	\$20	\$30,000
Concrete walks: large circle walk, connection to Library and corner, 6' wide, 4" thick, decorative scoring and finishing	9,460	SF	\$6	\$56,760
Seeded lawn w/ 4" stockpiled topsoil	8,000	SY	\$2	\$16,000
Tree Removal, 12" cal. or larger (by City)	12	EA		\$0
Shrub Removal (by City)	1	Lump Sum		\$0
Perennials at corner, No. 3 cont. (by City)	280	EA	\$20	\$5,600
Ornamental trees at corner, 2.5" caliper (by City)	46	EA		\$0
Perennials at barn foundations (by City or Community Group)	800	EA		\$0
Sleeving for future lighting	100	LF	\$10	\$1,000
Irrigation System	1	Allowance	\$2,000.00	\$2,000
			Subtotal	\$111,360
			20% contingency	\$22,272
			Construction Cost Phase 1a	\$133,632
			10% design and engineering fees	\$13,000
			Project Cost Phase 1a	\$146,632
			Total Phases 1 and 1a	\$285,712

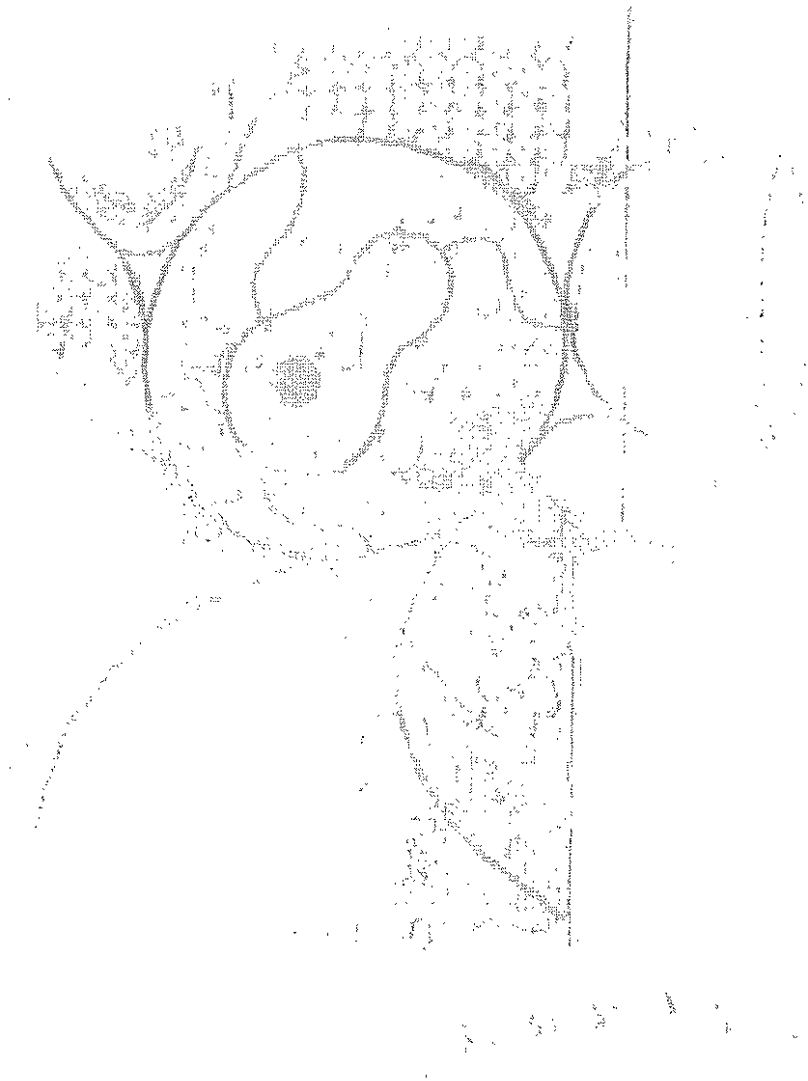
Phase 2 - Remaining Walks and Hilltop Improvements				
Concrete walks: remaining connections from south, 6' wide, 4" thick, decorative scoring and finishing	5,200	SF	\$6	\$31,200
Crushed granite paths, 4" depth on agg. base	5,000	SF	\$4	\$20,000
Fieldstone walls at corner (ave 30" ht., 12"-36" dia.)	350	LF	\$50	\$17,500
Fieldstone walls throughout site (ave 30" ht., 12"-36" dia.)	450	LF	\$50	\$22,500
Bench *	12	EA	\$3,000	\$36,000
Trash Receptacle*	3	EA	\$1,500	\$4,500
Large boulders at seating areas, 18"-36"	100	EA	\$200	\$20,000
Hilltop sculpture*	1	EA	\$300,000	\$300,000
Shrubs near barn foundations	100	EA	\$50	\$5,000
Wildflowers, seed and plugs 6' o.c.	1	AC	\$10,000	\$10,000
Decorative Lightpoles, 12' ht.	30	EA	\$3,500	\$105,000
Up lights at sculpture and Town Hall	12	EA	\$1,000	\$12,000
Sound/light system (mounted to light poles) at Town Hall	1	Allowance	\$10,000	\$10,000
			Subtotal	\$562,500
			20% contingency	\$112,500
			Construction Cost Phase 2	\$675,000
			geotechnical and soil testing	\$5,000
			10% design and engineering fees	\$67,500
			Project Cost Phase 2	\$747,500

Phase 3 - Additional Amenities				
Corner sculpture *	1	EA	\$150,000	\$150,000
Trellis *	100	LF	\$600	\$60,000
Grape Arbor *	50	LF	\$200	\$10,000
Play Sculpture *	1	Allowance	\$60,000	\$60,000
			Subtotal	\$280,000
			20% contingency	\$56,000
			Construction Cost Phase 3	\$336,000
			10% design and engineering fees	\$33,600
			Project Cost Phase 3	\$369,600
			Total	\$1,402,812

* Indicates donor possibility through naming rights or other program




Phasing Plan

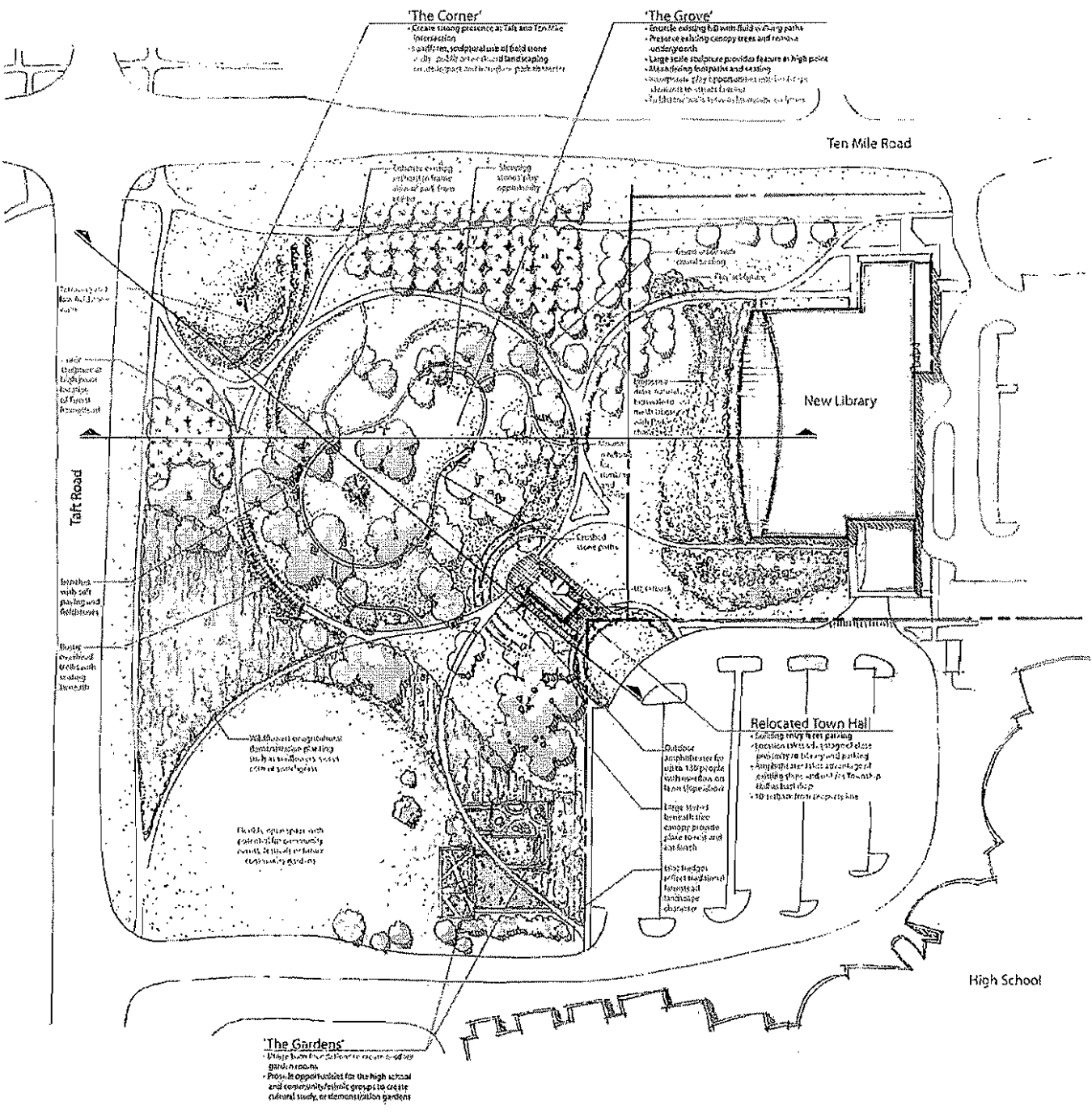


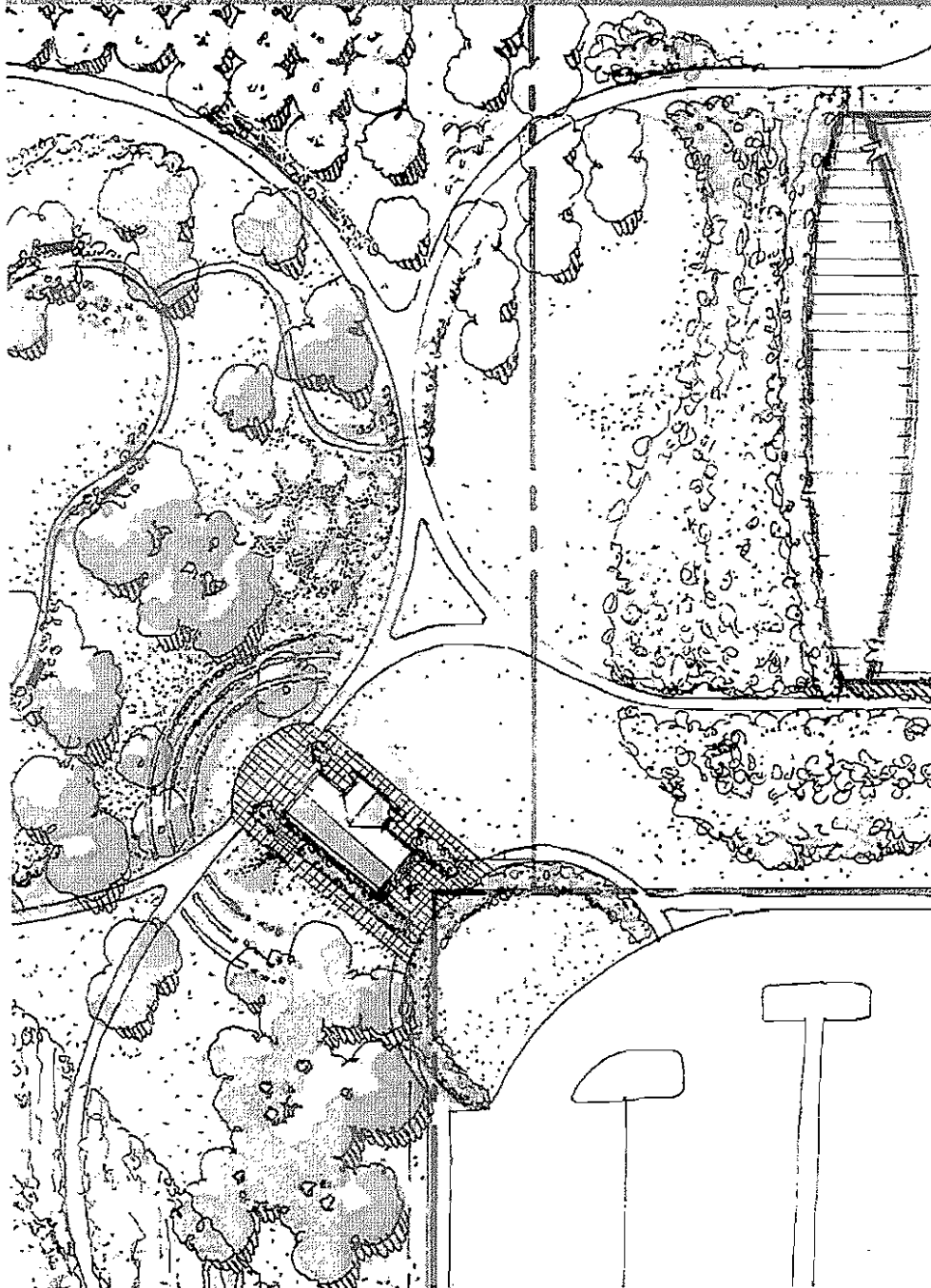
PHASE I:
AMPHITHEATER AND
TOWN HALL - COMPLETE

PHASE IA: 
CIRCLE WALK, CONNECTION TO
LIBRARY, OVERALL LANDSCAPING
AND INFRASTRUCTURE

PHASE 2: 
REMAINING WALKS, HILLTOP
SCULPTURE, FIELDSTONE WALLS,
BENCHES, LIGHTING, AND
WILDFLOWER PLANTING

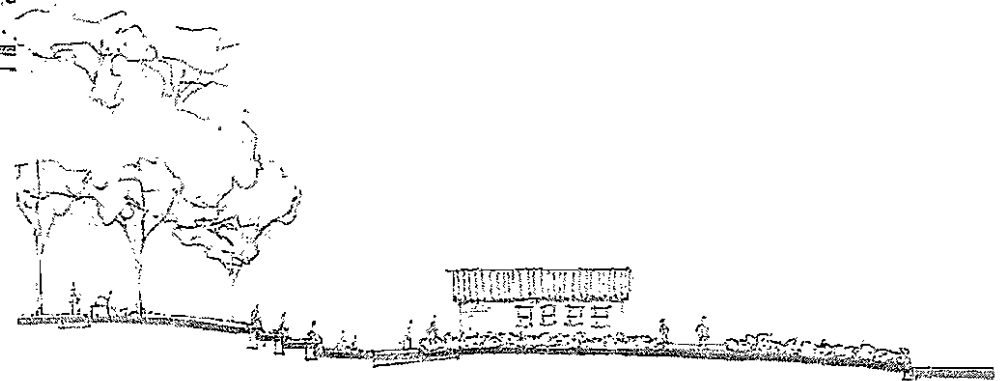
PHASE 3: 
SPECIAL FEATURES





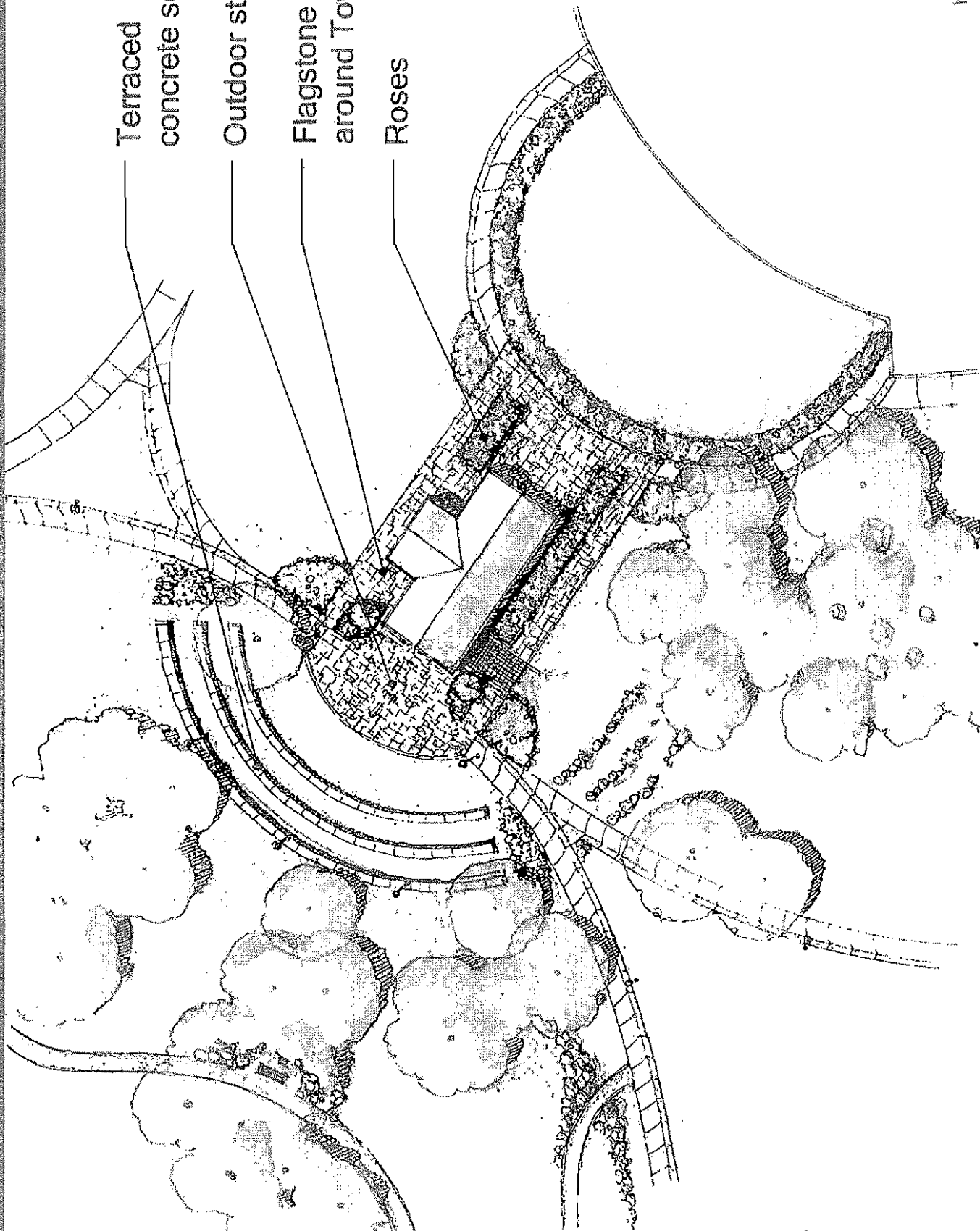
The Amphitheater and Township Hall

- Township Hall is renovated with air conditioning and a restroom addition
- Township Hall entrance off parking provides easy access
- Amphitheater utilizes Township Hall as backdrop for performances
- Seating area takes advantage of existing topography and close proximity to new Library



Fuerst Park – Phase 1

City Council Presentation
November 10, 2008



Terraced
concrete seating

Outdoor stage

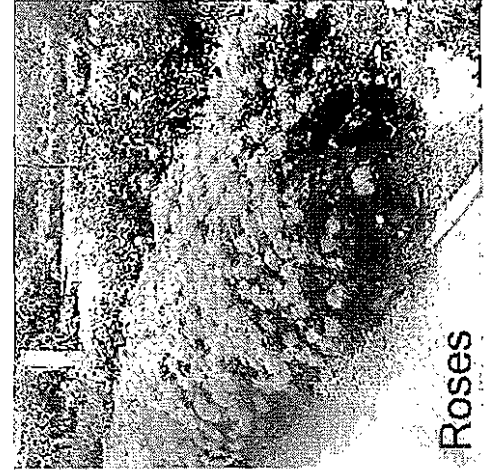
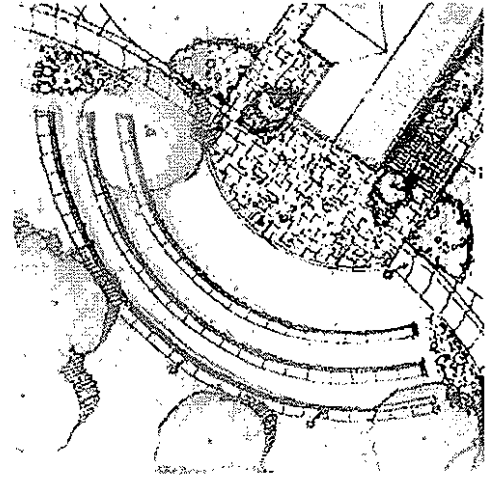
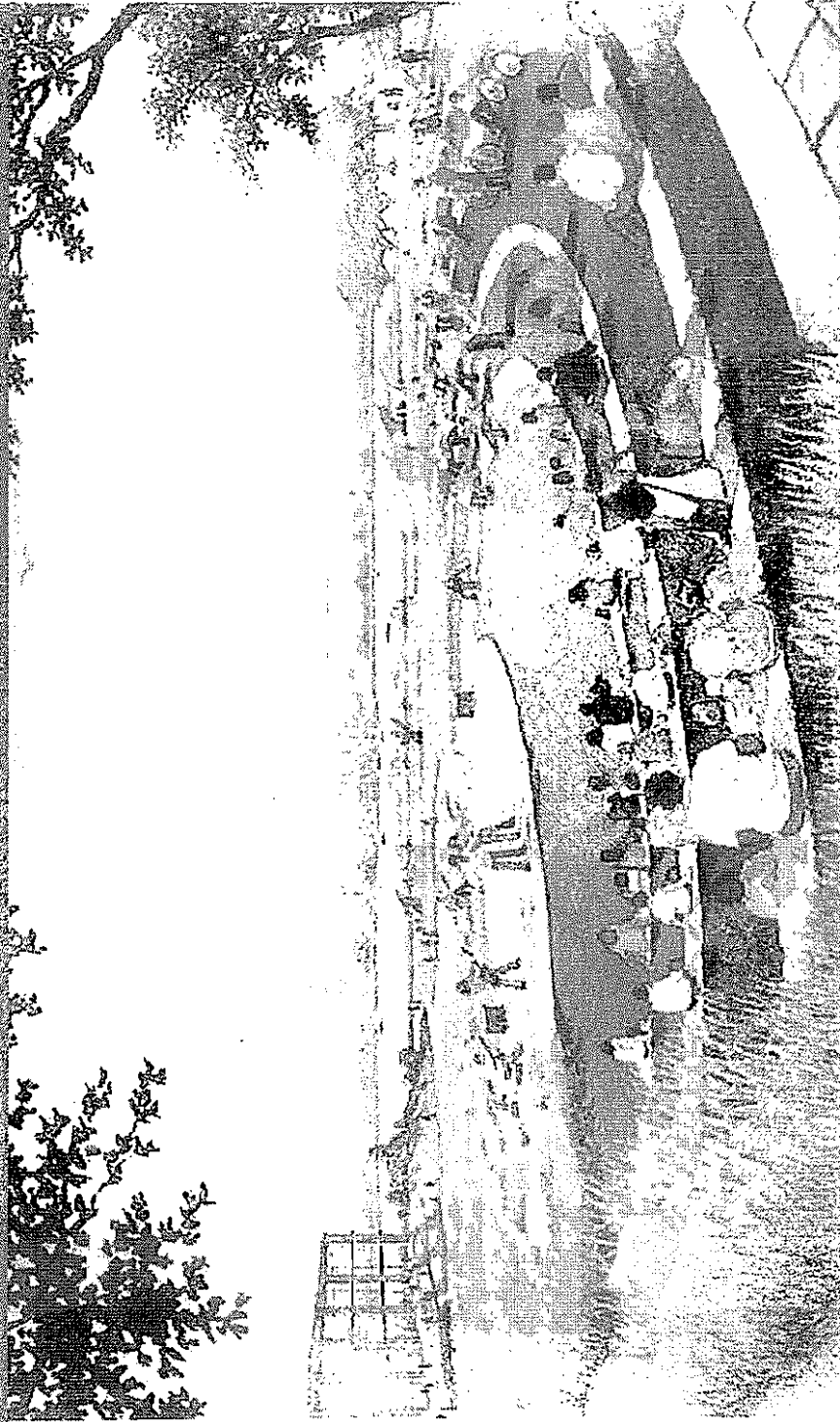
Flagstone paving
around Town Hall

Roses

Euerst Park – Phase I

City Council Presentation
November 10, 2008

Terraced
concrete
seating



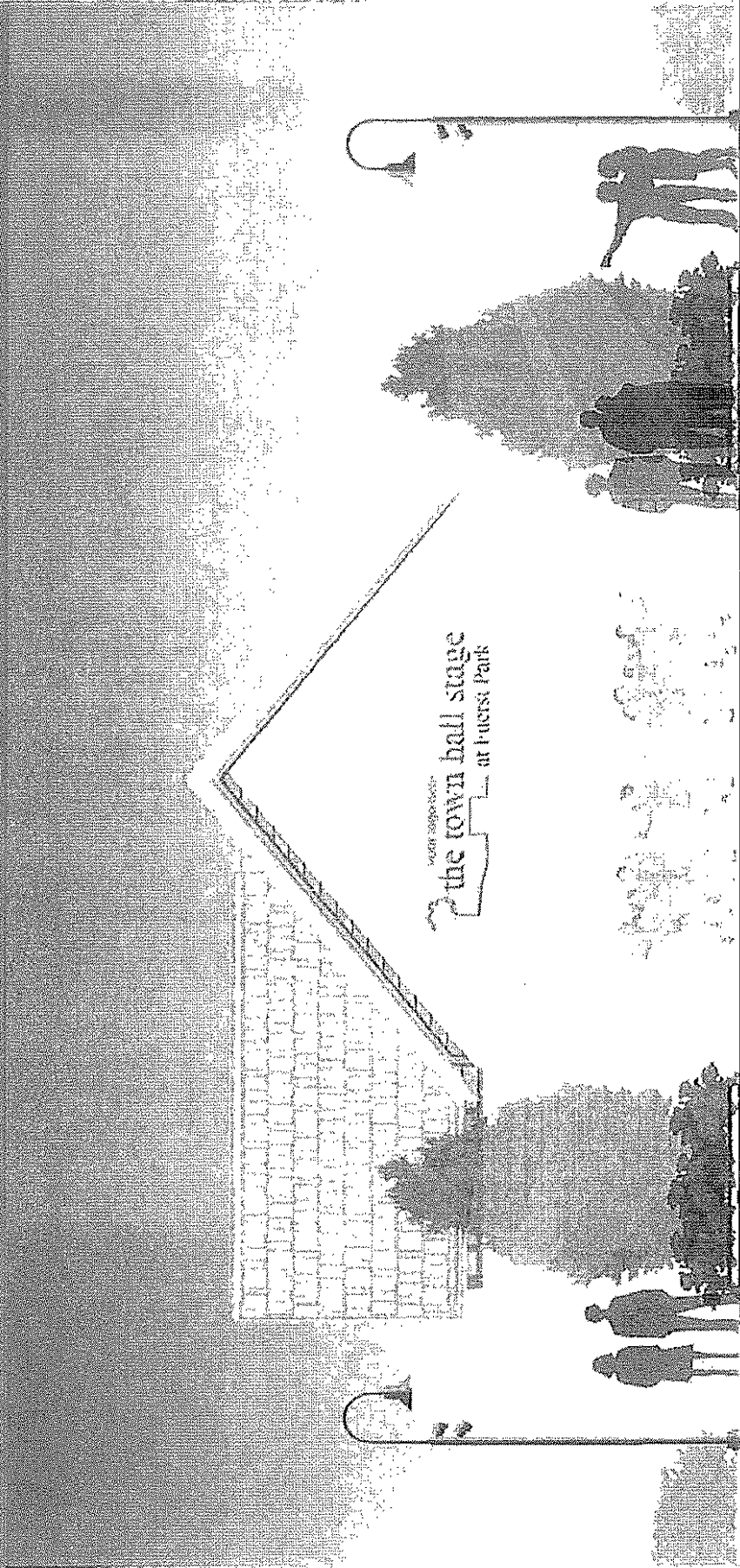
Roses



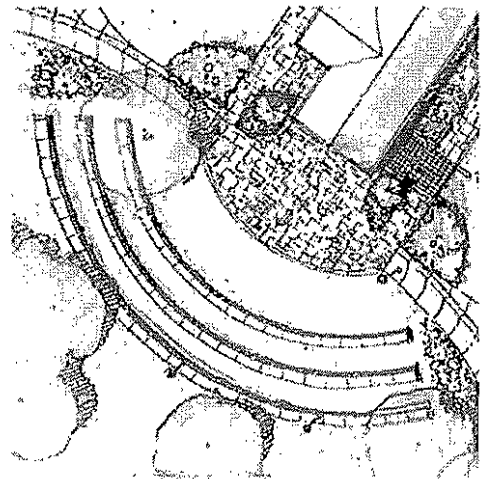
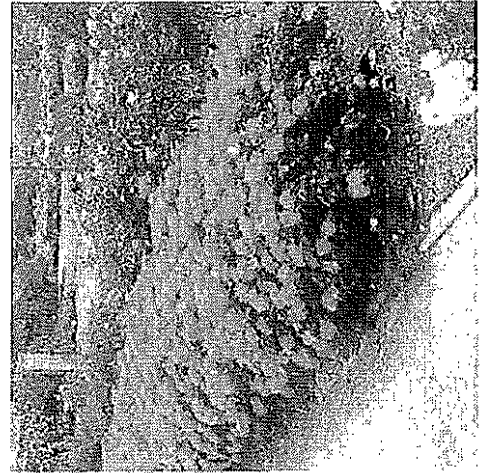
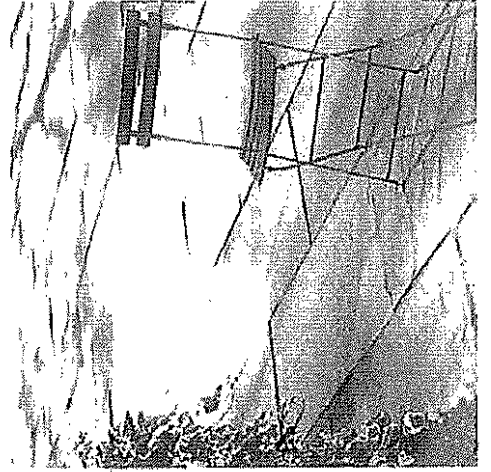
Flagstone paving
around Town Hall

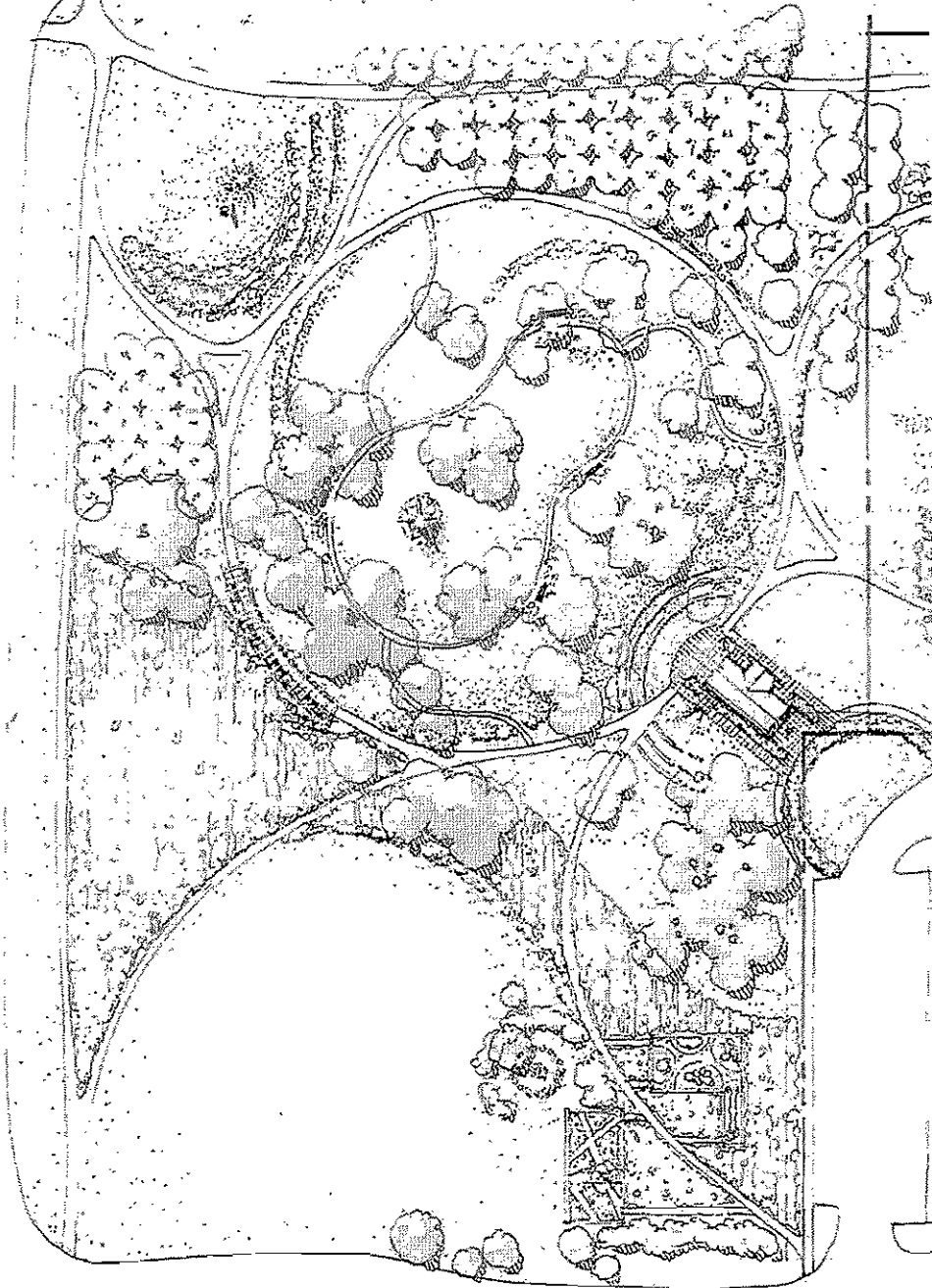
Fuerst Park – Phase 1

City Council Presentation
November 10, 2008



Town Hall as backdrop
for performance events
(lighting in future
phase)



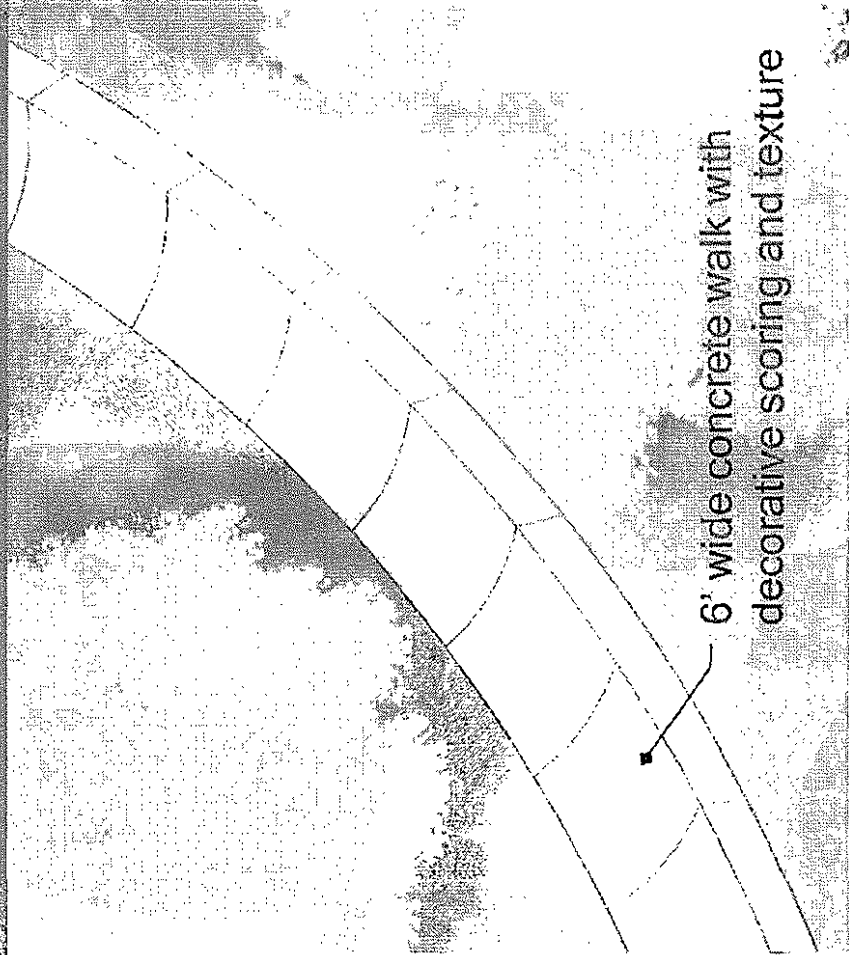
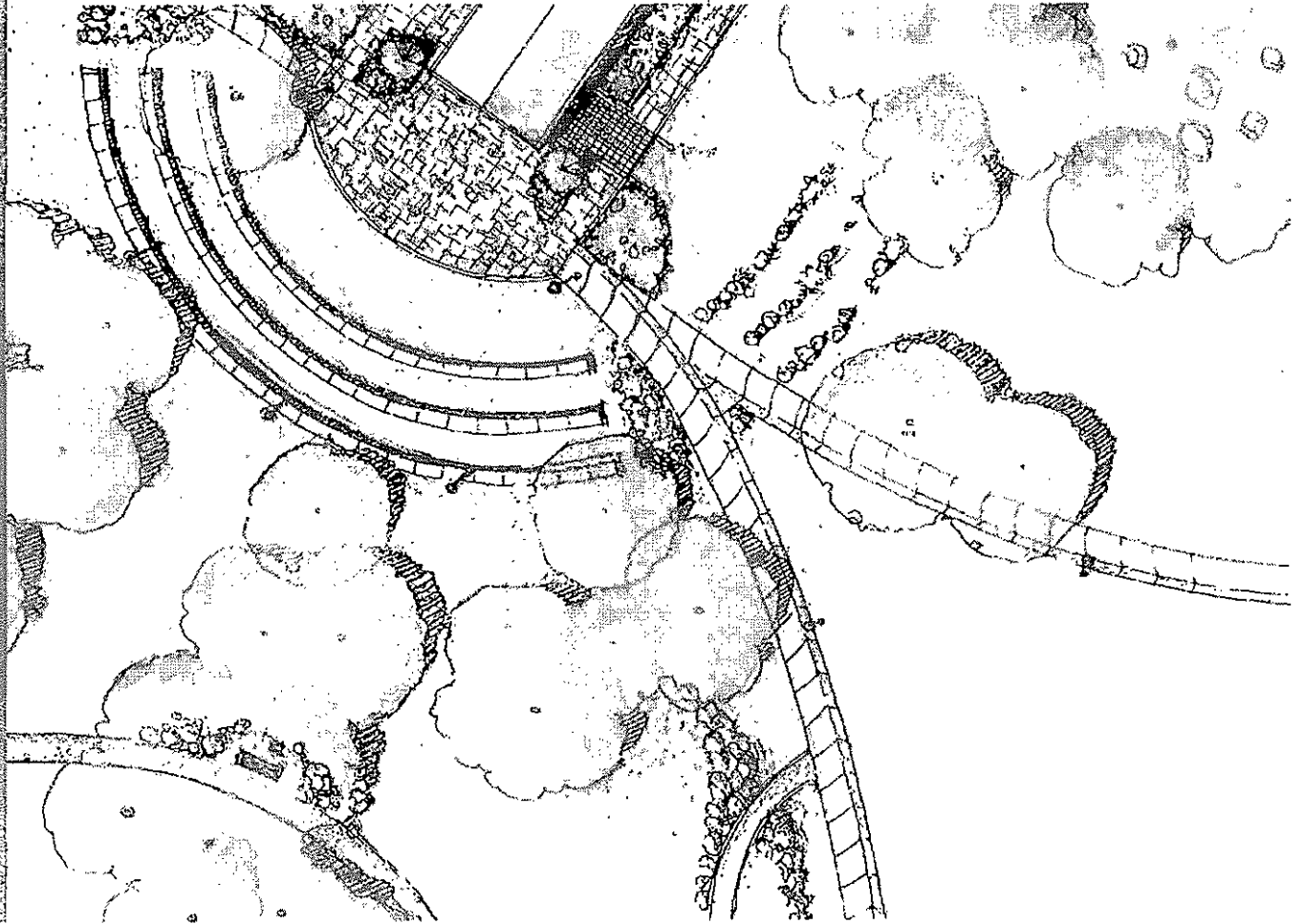


Phase 1a Walkways

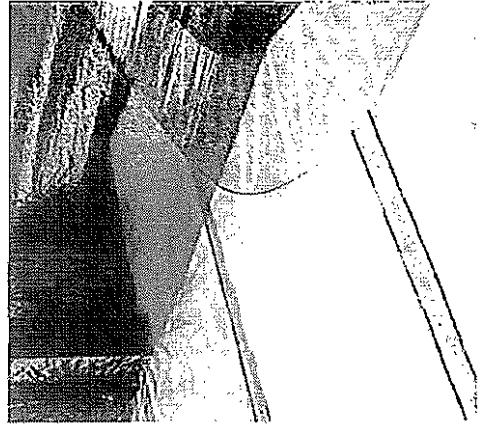
- Large hilltop circle, connection to library and amphitheater, and path to 10 Mile/Taft intersection will be included in Phase 1a
- Remaining walks will be completed in a future phase

Fuerst Park – Phase 1a

City Council Presentation
November 10, 2008



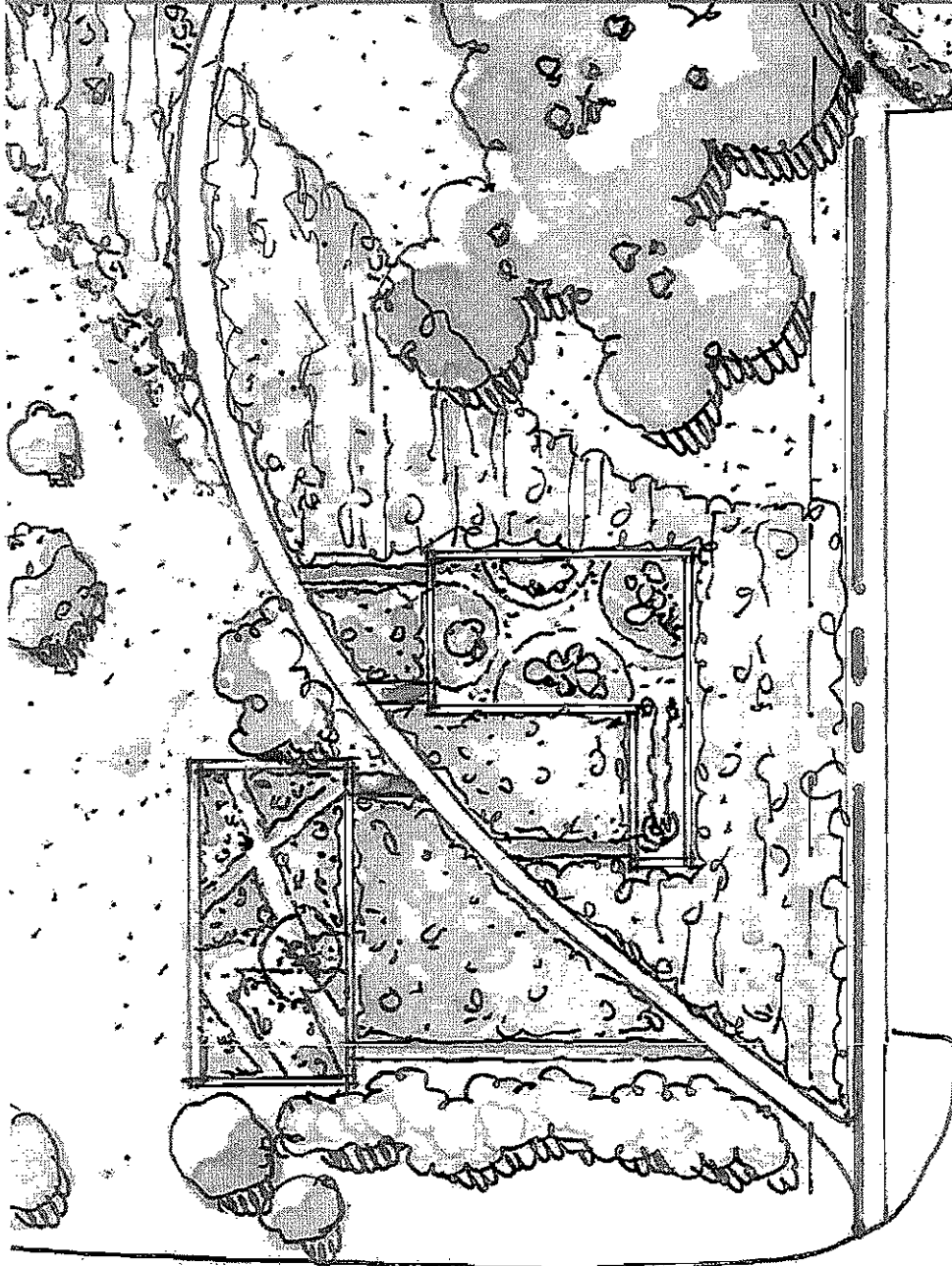
6' wide concrete walk with decorative scoring and texture



The Corner

- Broad strokes of ornamental grasses and perennials will highlight corner
- New orchard-like plantings frame views into the park and provide a subtle farm reference. Plantings extend into 10 Mile right-of-way
- Fieldstone walls will be included in a future phase



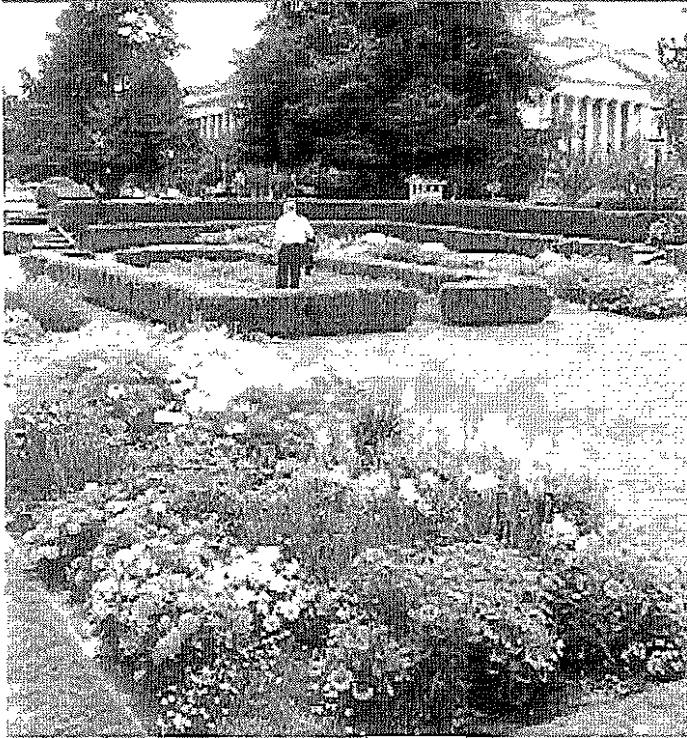


The Gardens

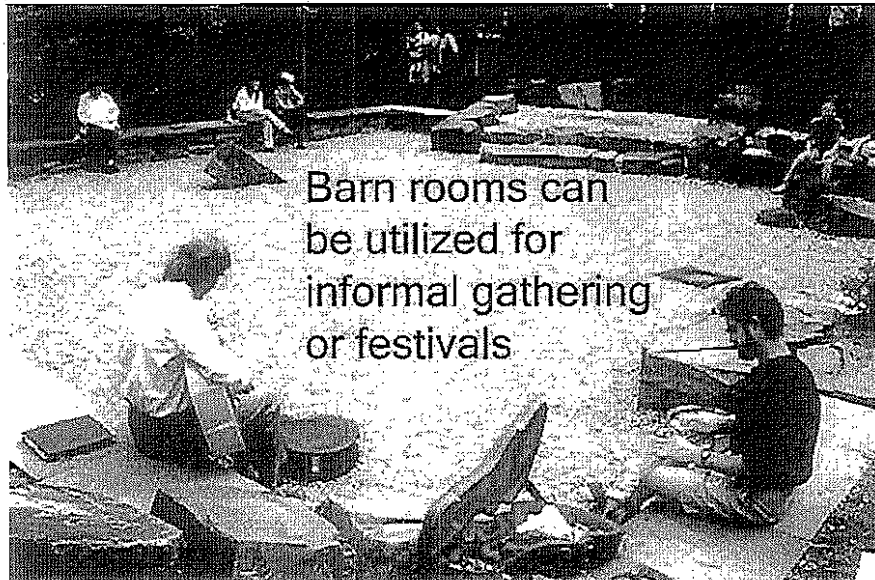
- Salvaged barn foundations frame gardens potentially developed by community and ethnic groups or garden clubs
- Opportunity to program spaces for community events such as fall pumpkin festival etc.
- Lilac hedges frame gardens as part of a future phase

Fuerst Park – Phase 1a

City Council Presentation
November 10, 2008



Gardens can be developed by community groups in historic barn foundations.



Barn rooms can be utilized for informal gathering or festivals



**CITIZEN INPUT
SURVEY
RESPONSES**

CITIZEN INPUT SURVEY

What do you believe should be the programming opportunities for Fuerst Park?	Please provide your input regarding the Conceptual Plan that is currently posted on cityofnovi.org	Please include your name and city of residence.
	I think it is a lovely plan but would like to see an out-doors ice rink included for an old-fashioned theme. I'm sure the Fuerst sisters would be pleased. Also make sure there are plenty of benches scattered throughout the park. My grandchildren love to climb and they are certain to use the park. How about fire works on July 4th?	Maureen Bright, Novi, MI
Outdoor Gatherings for Music, Plays, Art Exhibits. Walking Trails around the Library. Sculpture Displays. Seasonal Gardens.	Using the existing topography and the boulders from the chimney, create a "babbling brook" or stream that can be recirculated from a gathering pond below. Some sort of water feature would enhance the property and provide a soothing environment for citizens walking around the park.	David Margolis 45425 Addington Lane Novi, Michigan 48374
See my answer to the next question. I believe it will clearly set out some beneficial opportunities.	With all due respect, I find it uninspiring. I would prefer to see the money go to something that might lure potential homebuyers into coming to this area. I have my doubts that another "iconic" sculpture, such as those in the lawn of the Civic Center, is going to fit the bill. From a purely competitive standpoint, surrounding communities such as Livonia with its Rec Center, Northville's historic community and rejuvenated band shell, and Farmington with the good fortune of being able to participate in the National Trust for Historic Preservation/Main Street project, may have an edge. I believe there will be little to commend this area with an open air amphitheater, that may potentially create a noise issue for neighbors and that will likely be used for 6, maybe 7 months out of the year. We might do better to put the money into renovating the barn and creating an area that might be used for revenue, such as dances, homecoming events, parties and community activities, move the museum and add the paths, seating and firepit areas.	Teresa Furman Novi, MI
Family picnics. Concerts. Meetings. Festivals. Walking areas. Flowers and gardening opportunities for local groups.	There is nothing new here. You tore down the Farm. Now, make it a place that is beautiful and useful to our citizens. Put in a monument to the history of the corner at least, and then make the area useful for concerts, picnics, and festivals. We don't need any more soccer fields or ball diamonds.	John Kuenzel Novi Resident

<p>Novi needs a passive park where residents can gather in small groups or individually to relax and socialize. Furst is an ideal location (centrally located) and easily reached by foot, bike or car. Cultural or social programs would be suitable (no sports programs). Lectures, discussion programs, small musical type programs etc. There could also be small craft programs such as art, woodworking etc. organized by the City for residents to</p>	<p>Walkways/bike paths are essential. Several small areas for sitting on benches throughout the park make it more usable and inviting as a gathering spot. Lighting in the sitting areas would extend the usable hours of the park. The amphitheatre would provide many program opportunities. Trees and landscaping all serve to make it very reflective of the high quality reputation that Novi has.</p>	<p>Paul Policicchio - Novi</p>
<p>Yes. Question is who will co-ordinate the activities. It is a good size site with multiple opportunities and will need careful scheduling in order to minimize conflict and overuse.</p>	<p>The current plan is a significant improvement over the previous one. It seems to carefully unify all the elements of the site while maximizing access and usage. The plantings are thoughtful . Some questions: How is the art to be commissioned and paid for? What are the projected maintenance cost estimates for the gardens and landscape on an annual basis? Will their care be done by existing City staff or independently bid contract or volunteer? What is the projected time line for the site's development. Some of the components will take time (years?) to grow. Will there be any on-site identification of the history of the site and its' significance?</p>	<p>Kathleen McLallen 21066 Cambridge Drive Northville, Michigan 48167</p>
<p>I would think it would mirror or expand upon what is currently offered today. I think the local boy and girl scout troops should be able to use the park for their special events. Anything to promote family get togethers and not just those with young children but with teens, lots of organized activities for our teens and senior adults. What will the park accommodate for cold weather/winter? A winter festival would be fabulous but do not see this as a Year Round plan.. we need a pond for ice skating and a bridge with concessions nearby to sell hot chocolate for holiday lighting festival and make sure the park has the ability to accommodate lighting of trees.</p>	<p>The plan is missing a water feature and a bridge (something the girl scouts desperately need for their bridging ceremonies!) I think a pond with outdoor skating would be really nice, the park should be useful YEAR ROUND for all kinds of weather. Where are the restrooms? Do we have to go to the library, town hall or community center for that and what will hours these facilities will be open? Is there a place for concessions to sell water, hot chocolate, food? This would be a big plus for community events, the profits could be donated to upkeep the park. Another option is to have volunteers sign up to work concessions as fundraiser opportunity with a portion of sales to their group or organization.</p>	<p>Karen Beliveau Novi, Michigan</p>

<p>outdoor concerts, farmers' market, community meeting place for scout and other groups, meeting friends with children, picnics.</p>	<p>can amphitheatre seating be larger than 150 persons? this new location will attract more people for concerts than old location. would also like to see it in a different location of the park. it looks like amphitheatre runs into a driving lane of the parking lot. how will this affect traffic when people are parking and walking to concerts? maybe it just need to be pushed back from the parking lot a bit. would like to see a covered shelter with picnic tables where groups can meet. would extend use of the park. love the gardens and would like to see more. a community adopt-a-garden like they have at the detroit zoo. how about a five senses garden? how about a michigan garden? bird houses, bat houses. sculptures not necessary, more interactive and/or sensory features such as a brick labyrinth, wind chimes, sun dial, gardens. green space is nice, but give us more reasons to make this a destination.</p>	<p>mary storch novi</p>
<p>Passive park use is fine. Most of the plan looks good, but the amphitheatre should be MUCH larger in order to host events such as concerts featuring both large and small groups as well as being used as an outdoor theatre. Novi could even host a Shakespeare in the park series.</p>	<p>The amphitheatre stage should be large enough to accomodate a full symphony orchestra and the Novi concert band for summer concerts. Seating for as many as 75 musicians plus space for percussion equipment would be necessary as would seating for closer to 300 people instead of the proposed 150. This size stage could also be used for outdoor summer theatre productions. A lighting and sound system would have to be incorporated, but think of the possibilities here.</p>	<p>Eric Shea, Novi</p>
<p></p>	<p>We are disappointed in the plan. My family lives across the street, but would utilize the Fuerst Park less than we did the Fuerst Farm. The plan does not address the city needs. Needs more "flexible open space".</p>	<p>Greg Dale Novi</p>
<p>I believe we need a park that has a section geared toward the younger children from tots to age 5, and another section for 6 to pre-teen. It would also be nice to have a section for outdoor summer concerts on the lawn.</p>	<p>The plan looks beautiful, I just worry that it may become a hangout for teens that could become unruly and provide a place for illicit actions if not properly monitored on a regular basis.</p>	<p>Jerry Frohlich Novi</p>
<p>Trails and walks. Plus a interactive farm exhibit depicting Novi when it was a rural community. A commerative wall/ garden in memory of the sisters that donated the land to the city and</p>	<p>I like it if it would incorporate the above.</p>	<p>Charley Staab Novi</p>

Easter Egg Hunt;	I believe that a sidewalk needs to be added for those residents walking eastbound along 10 mile to access the library in a more direct route and my suggestion would be for a small sidewalk to be extended from the sidewalk paralleling 10 mile just east of the small orchard of trees that would tie into the sidewalk that leads into the Library. It would be curved and basically mirror the sidewalk that leads from the sidewalk paralleling 10 mile for pedestrians walking westbound. A little confusing to describe but hopefully you'll understand it.	David Darling, Novi, MI 248-763-9901
	Amphitheater is a great idea. Could be used for summer concerts and library programs. Maybe even school groups. PLAN LOOKS GREAT.	NOVI
Summer Concerts, High School Band Concerts and anything that needs an outdoor stage. Maybe start a Novi City Band playing once a week Township Hall can be used for various exhibitions as it will be more accessible	Amphitheatre needs additional lawn seating for atleast 300 people besides the designed seating for 150 City needs an electronic sign board at the gateway of 10 Mile and Taft to advertise the various city events throughout the year, just as the High School has one. It is a great plan though	Prem B. D'Cruz, Novi

We appreciate your input.

1. What do you believe should be the programming opportunities for Fuerst Park?

Interpretive Signage should be provided to tell the history of the site. Maintain passive park with flexible programming space.

2. Please provide your input regarding the Conceptual Plan that is currently posted on cityofnovi.org

There needs to be a stronger connection and tie-in with the High School. The south east corner of the park should be more inviting to students with opportunities to sit and congregate. (hangout)

* 3. Please include your name and city of residence.

CITIZEN EMAIL

Ringle, Tracie

From: Karen Beliveau [karen.beliveau1110@yahoo.com]
 Sent: Wednesday, October 01, 2008 9:21 AM
 To: Ringle, Tracie; Lisa Hudgens
 Cc: novichurch@sbcglobal.net; 'alice elkin'; 'cheryl roest'; 'greg chapman'; 'karen kotcher'; 'Karen Kotcher'; 'karen quinn'; 'Lisa Bianchi'; 'lynn ditri'; 'marcy salemi'; 'myla lee'; 'tracie chapman'; 'Vandana Baddam'; 'cathy sheeran'; 'Cheryl Murphy'; 'Cindy Meriedeth'; 'David and Sue Verellen'; 'Kathy Carroll'; 'Kathy Hagenian'; 'kim giroux'; 'sue and larry henry'; 'sue henry'; 'susan gaynor'
 Subject: RE: Novi Parks Happenings

It is very impressive, but how about a pond with that bridge or perhaps something to allow for old fashioned outdoor skating or anything where the park can be used year round, perhaps for for a winter festival? What of evergreen trees so it doesn't look completely barren during the cold winter months? A lighted path and electricity throughout for holiday lighting. Concessions? Just some thoughts folks might want to consider when completing the survey.

--- On Tue, 9/30/08, Lisa Hudgens <ljudgens@twmi.rr.com> wrote:

From: Lisa Hudgens <ljudgens@twmi.rr.com>
 Subject: RE: Novi Parks Happenings
 To: tringle@cityofnovi.org
 Cc: novichurch@sbcglobal.net, "alice elkin" <alice22@twmi.rr.com>, "cheryl roest" <theroests@hotmail.com>, "greg chapman" <first407@gmail.com>, "karen kotcher" <Karen_Kotcher@Polk.com>, "Karen Kotcher" <kotchergang@mi.rr.com>, "karen quinn" <quinnxtwo@aol.com>, "Lisa Bianchi" <bianchil@valassis.com>, "lisa hudgens" <ljudgens@twmi.rr.com>, "lynn ditri" <dditri@twmi.rr.com>, "marcy salemi" <msalemi@ford.com>, "myla lee" <mylarob@sbcglobal.net>, "tracie chapman" <tlchapman76@hotmail.com>, "Vandana Baddam" <vrb@docutell.com>, "cathy sheeran" <catsheeran1@aol.com>, "Cheryl Murphy" <cheryl.murphy@gm.com>, "Cindy Meriedeth" <cindymeriedeth@aol.com>, "David and Sue Verellen" <dverellen1@hotmail.com>, "karen believeau" <karen.beliveau1110@yahoo.com>, "Kathy Carroll" <kmwcarroll@earthlink.net>, "Kathy Hagenian" <khagenian@aol.com>, "Kim giroux" <kbkkgiroux@earthlink.net>, "sue and larry henry" <lhenry@vico.com>, "sue henry" <sue@indoorgolf.com>, "susan gaynor" <susan-gaynor@sbcglobal.net>
 Date: Tuesday, September 30, 2008, 7:16 PM

Dear Tracie,

The plan for Fuerst Park looks absolutely fantastic! WOW! I am thoroughly impressed. Although I was sad to see the barn structures go I am glad to see that the space is incorporating many options for the community.

I have one request...

Can you incorporate a small wooden bridge somewhere in the plan?

There are 450-550 girl scouts in the Novi schools each year.

For their year-end ceremonies, each girl is supposed to walk over a bridge during the ceremony which symbolizes a transition to the next level in girl scouts; it's called "bridging". Frequently the scouts travel to Northville

to use the bridge at Mill Race for the brief ceremony or they have to rent a

bridge from the council, retrieve it from the White Lake girl scout store and haul it back to Novi and then take it back again. (And there are only 2-3 bridges that must be shared by hundreds of troops.)
Based on the new restructuring of the girl scout levels...each girl scout will bridge approximately 3-5 times between kindergarten and high school.

I think that the girl scouts are very important to the community of Novi and they represent a significantly-sized group of community citizens. When you consider the total girl scout families in any given year, you are looking at well over 2000+ Novi community citizens.

Please consider the addition of a small bridge to the master plan.

Thank you,
Lisa Hudgens

Pat and Lisa Hudgens
24899 Nottingham Drive
Novi, MI 483745
248-347-8848
Lisa cell 248-444-0491

-----Original Message-----

From: tringle@cityofnovi.org [mailto:tringle@cityofnovi.org]
Sent: Tuesday, September 30, 2008 4:48 PM
Subject: Novi Parks Happenings

Happy fall! The weather is getting cooler, but that's no reason to slow down your activity level. Novi Parks has plenty of programs to ensure a healthy, active lifestyle all year long. The whole family can stay fit together by participating in Fencing, Self Defense, Karate, Nature Programs and more. Adult fitness offerings include Aikido, Pilates, Glutes and Abs, and many others. Registration is currently underway for our new Men's Basketball league which starts in December. Younger children are sure to enjoy active programs like Tornado Toddlers and Climb and Gym. Youth Basketball and Volleyball registration is also going on now and ends October 3 (for some age groups).

To learn more about all of our programs (including creative opportunities and community events), visit cityofnovi.org and click on the Engage! publication.

Fuerst Park Conceptual Plan Input Opportunities

Next summer, the City will add another great asset to our community - Fuerst Park. This six and a half acre site is located at Ten Mile and Taft Roads and is adjacent to the High School, Library and Civic Campus. The City is seeking community input regarding the conceptual plan for the park. We encourage you to view the plan (attached) and complete the input survey at cityofnovi.org or at the Novi Civic Center, Library and Senior Center. The Parks, Recreation and Forestry Commission meeting on Thursday, October 9, 2008 at 7:30pm at the Novi Civic Center will provide another avenue for public comment.

Go for the Gold - Novi Parks Foundation Annual Gala

Support the Novi Parks Department by attending the Gala on Saturday, November 8, 2008 at the Rock Financial Showplace. The event includes hors d'oeuvres, strolling buffet, dessert bar, cocktails, DJ entertainment, auctions, and casino games. Special guests include Rachael Hunter and Grunwald from 99.5 WYCD. The price is \$125 per person or \$200 per couple.

Ringle, Tracie

From: Popovczak, John (J.R.) [jpopovcz@ford.com]
Sent: Wednesday, October 01, 2008 5:40 PM
To: Ringle, Tracie
Cc: Landry, David; Capello, Kim; Auler, Randy; popofam2@att.net
Subject: RE: Fuerst Park Conceptual Plan Input Opportunities

First I thought the city wasted a lot of time and money with the whole Fuerst deal. I was at one of the meetings that the Mayor was also at. He took up too much of the time telling of his visions. I don't think the city should have gone to the expense of getting outside consultants to examine options for the farm when it was not feasible to repair or keep them at the present location. I think and said at the meeting that they should be moved elsewhere (like to Maybury Park or another city park area). I have been involved in another community where an old 2 story building was trying to be saved. Well too much of the structure was rotten and in the end we made a one story building at a park for school children to assemble.

I also think the new library could have been done better. I am for a new library but I don't know why the city library can not be combined with the high school library which is right near by.

The school library is slow part of the year and think of the money and personnel that would be saved. I don't think that government really looks at cost savings and sharing resources.

The same with parks. How many parks are needed and where will the funds come from to keep them maintained.

The whole country is a mess. Home values are down. City revenues is down and cost are up. Private companies are combining, laying off people and looking for cost savings. I don't think governments are doing their part to trim down.

Another example was the recent Fall Expo at city hall. Some of the brochures given out there and also sent out by the city are glossy or color paper (expensive). Why can't the city just use newspaper print. The brochures just get thrown away.

From: Ringle, Tracie [mailto:tringle@cityofnovi.org]
Sent: Wednesday, October 01, 2008 3:44 PM
To: Ringle, Tracie
Subject: Fuerst Park Conceptual Plan Input Opportunities

Good afternoon,
Next summer, the City will add another great asset to our community - Fuerst Park. This six and a half acre site is located at the corner of Ten Mile and Taft Roads and is adjacent to the High School, Library and Civic Campus. The City is seeking community input regarding the conceptual plan for the park. We encourage you to view the plan (attached) and complete the input survey at cityofnovi.org, the Novi Civic Center, Library or Senior Center. The Parks, Recreation and Forestry Commission meeting on **Thursday, October 9, 2008 at 7:30pm** at the Novi Civic Center will provide another avenue for public comment.

Feel free to email me any comments you may have.

Regards,

Tracie Ringle, CPRP
Communications & Resource Development Supervisor
Novi Parks, Recreation & Forestry

10/28/2008

Ringle, Tracie

From: Mary Ann Roney [mary.roney@tir.com]
Sent: Wednesday, October 01, 2008 9:44 PM
To: Ringle, Tracie
Subject: RE: Fuerst Park Conceptual Plan Input Opportunities

It looks nice other than it needs a few red barns and an old stone house.

Mary Ann Roney

-----Original Message-----

From: Ringle, Tracie [mailto:tringle@cityofnovi.org]
Sent: Wednesday, October 01, 2008 3:44 PM
To: Ringle, Tracie
Subject: Fuerst Park Conceptual Plan Input Opportunities

Good afternoon,
Next summer, the City will add another great asset to our community - Fuerst Park. This six and a half acre site is located at the corner of Ten Mile and Taft Roads and is adjacent to the High School, Library and Civic Campus. The City is seeking community input regarding the conceptual plan for the park. We encourage you to view the plan (attached) and complete the input survey at cityofnovi.org, the Novi Civic Center, Library or Senior Center. The Parks, Recreation and Forestry Commission meeting on **Thursday, October 9, 2008 at 7:30pm** at the Novi Civic Center will provide another avenue for public comment.

Feel free to email me any comments you may have.

Regards,

Tracie Ringle, CPRP
Communications & Resource Development Supervisor
Novi Parks, Recreation & Forestry
248.347.0400 office
248.735.5613 direct
248.347.3286 fax



Please consider the environment before printing this mail

Ringle, Tracie

From: John Garbacik [jgarbacik@yahoo.com]
Sent: Friday, October 03, 2008 11:51 AM
To: Ringle, Tracie
Subject: Re: Fuerst Park Conceptual Plan Input Opportunities

Tracie,

I think that the plan needs:

A Water Features; the Town Center has a nice fountain in place.

Seating along the path for walkers

A place to park bikes

A demonstration garden that would attract visitors to see the gardener Clock Tower at Ten Mile and Taft A gazebo for weddings and entertainment Dog waste containers Night scape lighting Ability to hold outside Art shows, Movies in summer, concerts More kid climbing equipment Skate board path

I will try and come up with more.

John

--- On Wed, 10/1/08, Ringle, Tracie <tringle@cityofnovi.org> wrote:

> From: Ringle, Tracie <tringle@cityofnovi.org>
> Subject: Fuerst Park Conceptual Plan Input Opportunities
> To: "Ringle, Tracie" <tringle@cityofnovi.org>
> Date: Wednesday, October 1, 2008, 3:43 PM Good afternoon,
>
> Next summer, the City will add another great asset to our community -
> Fuerst Park. This six and a half acre site is located at the corner
> of Ten Mile and Taft Roads and is adjacent to the High School, Library
> and Civic Campus. The City is seeking community input regarding the
> conceptual plan for the park. We encourage you to view the plan
> (attached) and complete the input survey at cityofnovi.org, the Novi
> Civic Center, Library or Senior Center. The Parks,
> Recreation and
> Forestry Commission meeting on Thursday, October 9, 2008 at 7:30pm at
> the Novi Civic Center will provide another avenue for public comment.
>
>
>
> Feel free to email me any comments you may have.
>
>
>
> Regards,
>
>
> Tracie Ringle, CPRP
> Communications & Resource Development Supervisor
> Novi Parks, Recreation & Forestry
>
> 248.347.0400 office
>
> 248.735.5613 direct
>
> 248.347.3286 fax

AUDIENCE PARTICIPATION AT
PRF COMMISSION
MEETING

PARKS, RECREATION AND FORESTRY COMMISSION

THURSDAY, OCTOBER 9, 2008 – 7:30 PM

NOVI CIVIC CENTER – COUNCIL CHAMBERS

AUDIENCE COMMENTS

Roy Prentice (28115 Meadowbrook Road, Farm Manager of MSU Property, Historic Commission Member) generally likes the plan but has a few concerns. He feels it is important that the landscaping and hardscaping around the Township Hall be something that would have been typical of the time period when it was first built for the City. He feels the building is a key building for Novi's history and an opportunity to celebrate that history. He also states that moving the Township Hall would result in the loss of storage and meeting space and he would like to see this loss incorporated into the Hall's design. He is also concerned that the amphitheatre's location, adjacent to the Township Hall, would present conflict if both locations were in use at the same time. He states that the plan would also do away with the open spaces that were once available to groups that utilized the Park as a whole and that the compartmentalization of the park would negatively effect larger functions. He likes that the barn foundations would be maintained but would want them treated in a fashion that is respectful to their heritage.

Roy Szalony (24164 Brentwood Court) lives west of the Fuerst Farm property and was a proponent of saving the Farm. He expresses mixed emotions at the concept. He was glad to see that the topography would be maintained but states that he is concerned about the frequency of use regarding the amphitheatre. He is also concerned about maintaining the foundation of the barns, similar to Roy Prentice. He is glad to see that the corner would be a highlight but still expresses his wish that the Farm had been saved.

Ray Soeters (does not give address) has a concern regarding handicapped access, particularly in respects to the amphitheatre seating. He feels the terraced seating arrangement will not accommodate people who use wheelchairs, walkers, or canes. He suggests that a flat space be incorporated so that elderly citizens may bring their own comfortable chairs. He assumes that all pathways within the park are accessible to these people as well and any stairs will be accompanied by ramps for those who need them. He would also like to see the Council make use of local assets, talents, and volunteers in the creation of this park. He would also like to see low impact development used as much as possible in order to avoid the need for catch basins and additional drain pipes and so on.

Ginger Behrends (24777 Glenda) states that she shared many of the views stated by previous speakers. Most importantly she would urge that the fire ring be excluded from the plan. She explains that she has severe asthma and that bonfires at the homes of her neighbors cause her a great deal of stress. She adds that fires are also no longer safe for the environment due to chemical use. She is in favor of plantings that utilize the historical character of the park. She would also like something in the park that identifies the Fuerst sisters. She states that she remains ambivalent about the amphitheatre and would be much more at ease if there were no sound system included. She states that the City's concerts are already a disturbance to her home and those are a bit further than this amphitheatre would be. She also approves of the addition of restrooms and air conditioning to Township Hall but adds that a basement should be incorporated. She would like to see more play areas in the park than sculptures and more open spaces. She concludes with the fact that we are in

difficult economic times and cannot give her approval of this plan until she sees how much it will cost.

Cheryl Csordas (24562 Sarah Flynn) states that she likes the plan with the exception of the amphitheatre. She is already able to hear the high school band and concerts in the park from her house and feels that the amphitheatre would add to if not make this situation worse. She would like to see it eliminated from the plan and placed somewhere else in the City. She adds that a skating pond for the winter would be a nice addition. She also dislikes the fire ring as it seems potentially very dangerous.

Vicky McLean (44709 Dunbarton Drive) states that she is pleased with the plan's majority of passive activity. She agrees with previous speakers and is concerned about the hardscaping around Township Hall. She is also strongly opposed to the fire ring as the liabilities would outweigh the benefits. She was unaware until this evening that the plans had been changed for Township Hall so that it would not include a basement. She agrees that the inclusion of a basement is essential.

Commissioner Schwarzlose reads a letter from the Beautification Committee. It states that the Commission approves of the bioswale. They are interested in finding out if the Novi high school parking drain in the area of the library bioswale could direct runoff water to the rain garden. They feel this would improve the frequent flooding that occurs on Taft Road by the north entrance of the high school. They add that a second bioswale on the east side of Taft Road south of Ten Mile Road in the native planting area would also improve this flooding. Another suggestion is for a labyrinth that would provide visitors with a chance to meditate and relax. They refer to the websites www.lessonforliving.com or www.labyrinthcompany.com. They conclude with praise for the Parks and Recreation Committee on doing a good job on the plan.