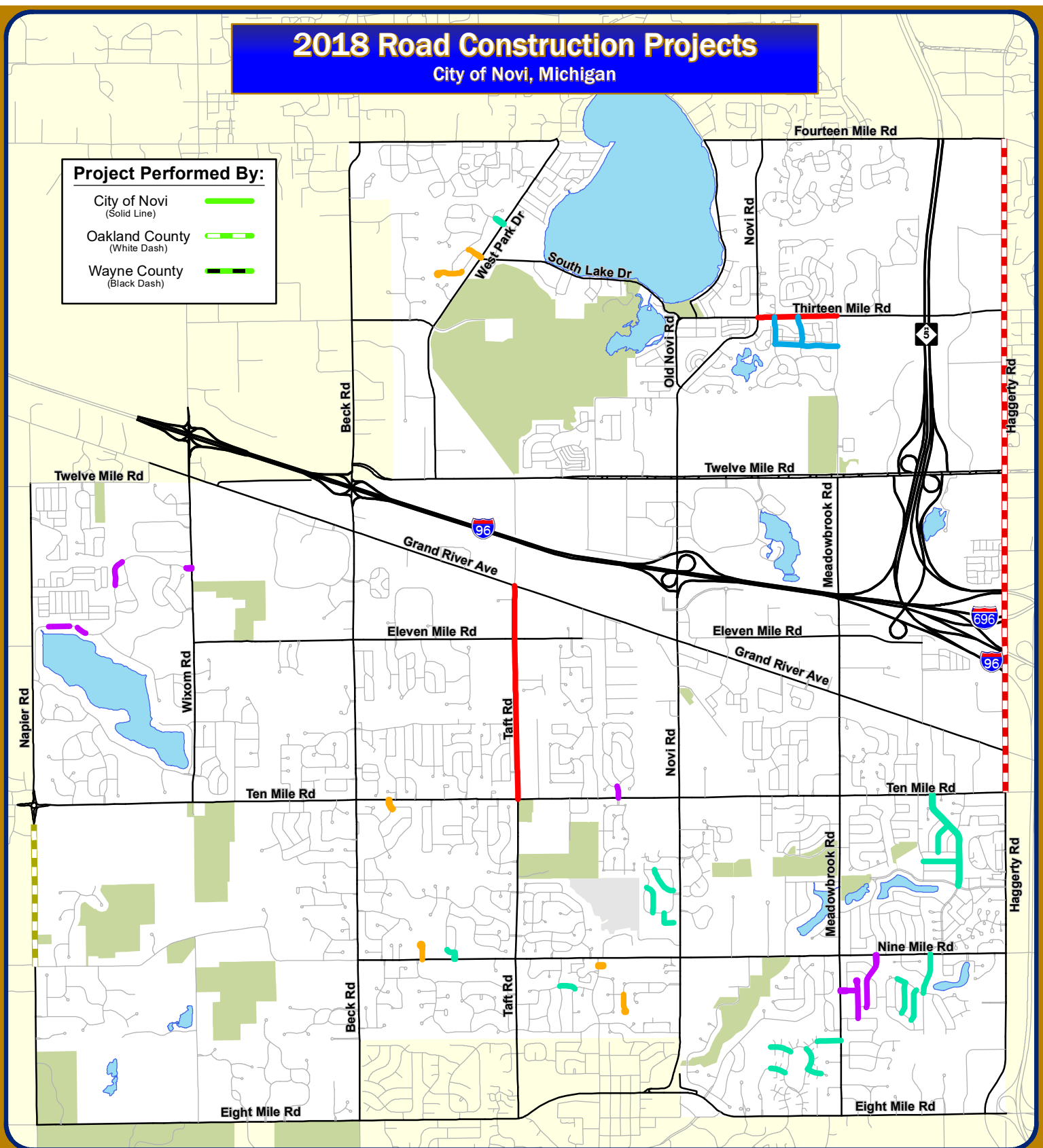


# 2018 Road Construction Projects

## City of Novi, Michigan

### Project Performed By:

- City of Novi (Solid Line) —
- Oakland County (White Dash) - - -
- Wayne County (Black Dash) - - -



Map Author: Keri Blough  
 Date: March 23, 2018  
 Project: 2018 Road Construction  
 Version #: 1.2

#### MAP INTERPRETATION NOTICE

Map information depicted is not intended to replace or substitute for any official or primary source. This map was intended to meet National Map Accuracy Standards and use the most recent, accurate sources available to the people of the City of Novi. Boundary measurements and area calculations are approximate and should not be construed as survey measurements performed by a licensed Michigan Surveyor as defined in Michigan Public Act 132 of 1970 as amended. Please contact the City GIS Manager to confirm source and accuracy information related to this map.

### Road Construction Projects

- Concrete Panel Replacement Program
- Neighborhood Roads Program - Asphalt
- Neighborhood Roads Program - Concrete
- Pavement Rehabilitation in SAD
- Major Road Projects
- Pave gravel road



## City of Novi

Engineering Division  
 Department of Public Services  
 26300 Lee BeGole Drive  
 Novi, MI 48375  
[cityofnovi.org](http://cityofnovi.org)



1 inch = 4,300 feet

