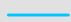

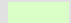



BROOKFARM PARK PATHWAY AND SIDEWALK PRIORITIZATION ANALYSIS AND PROCESS 2010 UPDATE

Legend

-  Watercourses
-  Park Boundary
-  Area Facilities
-  Pedestrian Bridge Crossing



CITY OF NOVI

DEPARTMENT OF COMMUNITY DEVELOPMENT
 45175 W. TEN MILE ROAD
 NOVI, MI 48375-3024
 (248) 347-0415
 MAP AUTHOR: CHRIS BLOUGH,
 GIS MANAGER



1 INCH = 200 FEET

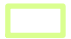
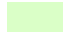

MAP PRINT DATE: 11/10/2010

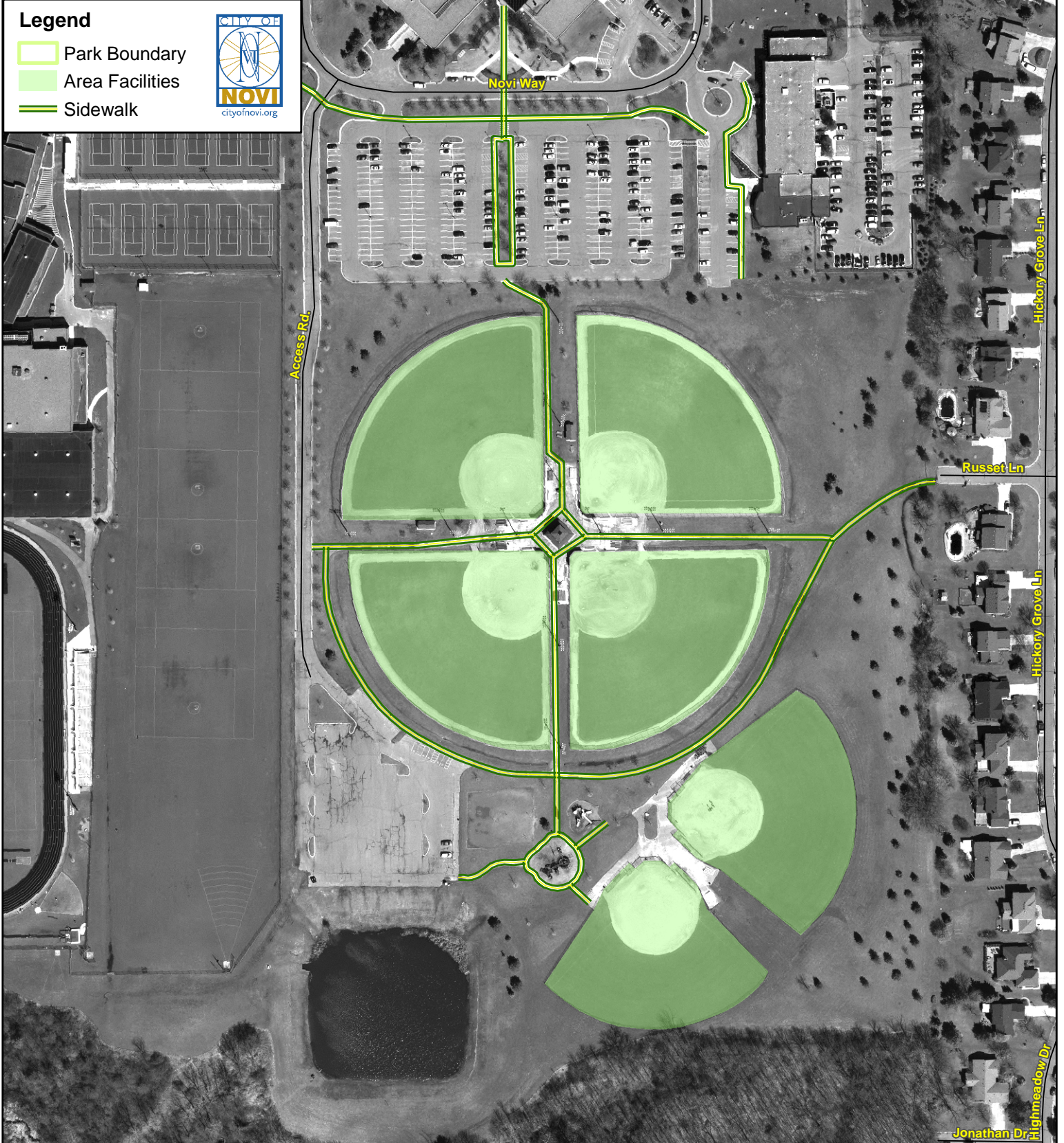
MAP INTERPRETATION NOTICE

Map information depicted is not intended to replace or substitute for any official or primary source. This map was intended to meet National Map Accuracy Standards and use the most recent, accurate sources available to the people of the City of Novi. Boundary measurements and area calculations are approximate and should not be construed as survey measurements performed by a licensed Michigan Surveyor as defined in Michigan Public Act 132 of 1970 as amended. Please contact the City GIS Manager to confirm source and accuracy information related to this map.

ELLA MAE POWER PARK 2010 UPDATE PATHWAY AND SIDEWALK PRIORITIZATION ANALYSIS AND PROCESS

Legend

-  Park Boundary
-  Area Facilities
-  Sidewalk



CITY OF NOVI

DEPARTMENT OF COMMUNITY DEVELOPMENT
 45175 W. TEN MILE ROAD
 NOVI, MI 48375-3024
 (248) 347-0415
 MAP AUTHOR: CHRIS BLOUGH,
 GIS MANAGER



1 INCH = 200 FEET






MAP PRINT DATE: 11/10/2010

MAP INTERPRETATION NOTICE

Map information depicted is not intended to replace or substitute for any official or primary source. This map was intended to meet National Map Accuracy Standards and use the most recent, accurate sources available to the people of the City of Novi. Boundary measurements and area calculations are approximate and should not be construed as survey measurements performed by a licensed Michigan Surveyor as defined in Michigan Public Act 132 of 1970 as amended. Please contact the City GIS Manager to confirm source and accuracy information related to this map.

FUERST PARK 2010 UPDATE PATHWAY AND SIDEWALK PRIORITIZATION ANALYSIS AND PROCESS

Legend

-  FuerstParkTrails
-  Pathway
-  Sidewalk
-  Area Facilities
-  Parks



CITY OF NOVI

GEOGRAPHIC INFORMATION SERVICES
DEPARTMENT OF INFORMATION TECHNOLOGY
45175 W. TEN MILE ROAD
NOVI, MI 48375-3024
(248) 347-0415
MAP AUTHOR: CHRIS BLOUGH,
GIS MANAGER



1 INCH = 100 FEET

MAP PRINT DATE: 11/10/2010

MAP INTERPRETATION NOTICE

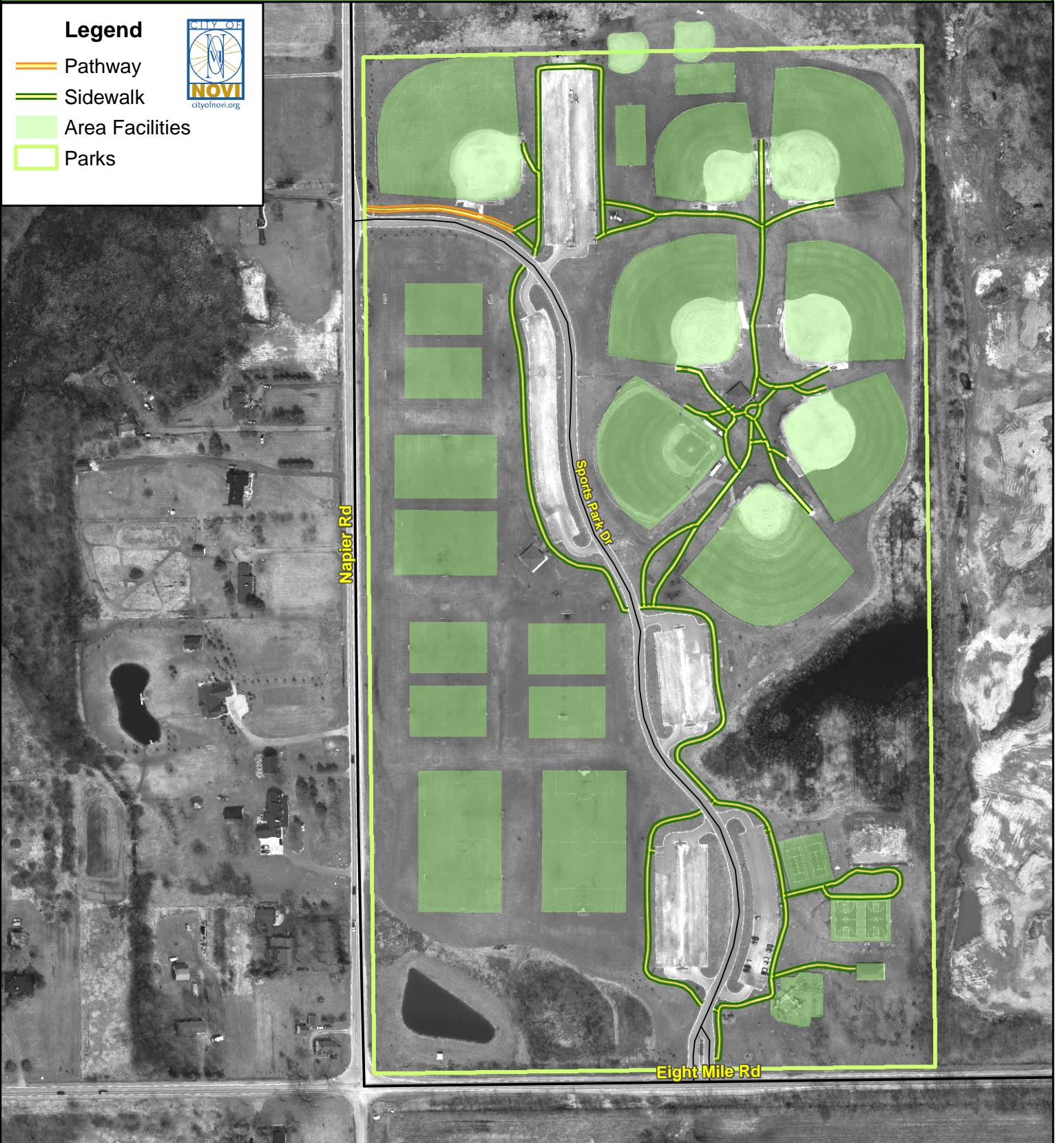
Map information depicted is not intended to replace or substitute for any official or primary source. This map was intended to meet National Map Accuracy Standards and use the most recent, accurate sources available to the people of the City of Novi. Boundary measurements and area calculations are approximate and should not be construed as survey measurements performed by a licensed Michigan Surveyor as defined in Michigan Public Act 132 of 1970 as amended. Please contact the City GIS Manager to confirm source and accuracy information related to this map.

ITC COMMUNITY SPORTS PARK 2010 UPDATE

PATHWAY AND SIDEWALK PRIORITIZATION ANALYSIS AND PROCESS

Legend

-  Pathway
-  Sidewalk
-  Area Facilities
-  Parks



CITY OF NOVI

DEPARTMENT OF COMMUNITY DEVELOPMENT
 45175 W. TEN MILE ROAD
 NOVI, MI 48375-3024
 (248) 347-0415
 MAP AUTHOR: CHRIS BLOUGH,
 GIS MANAGER



1 INCH = 309 FEET

MAP PRINT DATE: 11/10/2010

MAP INTERPRETATION NOTICE

Map information depicted is not intended to replace or substitute for any official or primary source. This map was intended to meet National Map Accuracy Standards and use the most recent, accurate sources available to the people of the City of Novi. Boundary measurements and area calculations are approximate and should not be construed as survey measurements performed by a licensed Michigan Surveyor as defined in Michigan Public Act 132 of 1970 as amended. Please contact the City GIS Manager to confirm source and accuracy information related to this map.