



WALKABLE NOVI COMMITTEE

AGENDA

July 16, 2020 at 5:30 p.m.

Zoom Electronic Meeting Platform

(248) 347-0475

Members: Julie Maday, Brent Ferrell, Justin Fischer, Andrew Mutch, Salene Riggins and Brian Smith

Staff Support: Lindsay Bell, Senior Planner, Community Development
Barbara McBeth, City Planner, Community Development
Madeleine Kopko, Planning Assistant, Community Development
Jeff Muck, Director of Parks, Recreation and Cultural Services
Rebecca Runkle, Plan Review Engineer

ROLL CALL

APPROVAL OF AGENDA

MATTERS FOR DISCUSSION

- a. Discussion of Draft Top 20 segments for Annual Non-Motorized Prioritization Update

STAFF UPDATES

1. Planning Update
 - a. Completed and Scheduled Projects
 - b. 2019-20 Pedestrian/Bike Accidents in Novi
2. Engineering Update
 - c. Active Non-Motorized Project Portfolio for Engineering Division
3. Parks, Recreation and Cultural Service Update

AUDIENCE PARTICIPATION

COMMUNICATIONS

ADJOURN

MEMORANDUM



TO: WALKABLE NOVI COMMITTEE
FROM: LINDSAY BELL, SENIOR PLANNER
SUBJECT: ANNUAL NON-MOTORIZED PRIORITIZATION: TOP 20 SEGMENTS
DATE: JULY 9, 2020

This memo provides a brief summary of documents included in the packet for Walkable Novi Committee meeting on July 16, 2020. As we have had to adapt to changing circumstances in light of COVID-19 and staffing, the committee has missed two of its scheduled meetings this year. The annual implementation status update typically reviewed by the committee will not be completed this year. Instead we will move ahead to review the annual prioritization of sidewalk and pathway segments. The following documents are included in the packet:

1. A list of all sidewalks that have been completed in the previous year by the city or as part of private development projects.
2. A list is included of projects that are either scheduled for construction, under construction or are approved as part of site plan reviews. Site plans which are at the final stamping set approval phase are selected for this list. These segments are removed from the master list that is rated for rankings.
3. A table describing each of the Tier 1 and Tier 2 categories.
4. A table that lists the draft Top 20 segments. Three new segments made it to Top 20. The remainder of them carried over from last year.
5. A map showing the locations of the 2020 top 20 segments.
6. The master spreadsheet for all missing segments within City of Novi.
7. A list of pedestrian and bicycle accidents from July 1, 2019 to June 30, 2020 provided by the City of Novi Police Department.
8. A snapshot of the 8 sidewalk/pathway projects included in the 2020 Capital Improvement Program.
9. A memo and associated documents providing updates on public sidewalk projects in design or construction from the city's Project Engineer.

If the Committee approves the draft Top 20, staff will complete the draft report and present at the next Walkable Novi Committee meeting (date to be determined at the upcoming meeting).

TABLE 2.1: 2019-20 Completed Non-Motorized Improvements (at time of report)

Segment Item #	Section #	Type	Side of Street/ Other	Location	From	To	Segment Length (ft.)
City Projects							
52c (part)	20	S	South	Eleven Mile	Bosco Park entrance		375
53	20	S	West	Beck Road	Bosco Park (City Project)		1150
102b (part)	30	P	North	Nine Mie	ITC Pathway		487
98b	30	P	North	Nine Mie	ITC Pathway		830
Off-Road	20-29	P		ITC Pathway	9 Mile to 11 Mile		10,423
2019-20 City of Novi Total							13,265
Private Development Projects							
1a (part)	1	S	South	Fourteen Mile	Berkshire E-Supply		637
18a (part)	11	S	north	Twelve Mile	Novi Senior Living		322
20b (part)	12	S	West	Haggerty Road	Hillside Office Park		450
62	22	S	North	Ten Mile	Emerson Park off-site boardwalk		383
64 (part)	22	S	East	Taft Road	Heritage Woods		200
74 (part)	24	S	East	Seeley Road	Novi Tech 6 & 7		317
41 (part)	17	S	East	Wixom Road	Villas at Stonebrook		115
166	4	P	North	West Road	46860 West Road		354
2019-20 Development Total							2,778

**TABLE 2.2: 2020-21 Non-Motorized Improvements under construction or scheduled for construction
(at time of report)**

Segment Item #	Section #	Type	Side of Street/ Other	Location	Description	Segment Length (ft.)
City Projects						
39	17	S	West	Beck Road	City Project	363
43	18	S	West	Wixom Road	City/Catholic Central Project	644
45	18	S	South	Twelve Mile Road	Northwest Neighborhood Park (Parks project)	332
120a*	36	S	West	Haggerty	City Project (Eight Mile to Orchard Hill)	1390
120b*	36	S	West	Haggerty	City Project (Orchard Hill to High Point)	375
120c*	36	S	West	Haggerty	City Project (High Point to Nine Mile)	600
32b	15	S	west	Novi Rd.	MDOT (I-96 south side)	723
33	15	S	west	Novi Rd.	MDOT (Crescent)	840
70	23	P	West	Meadowbrook	City Project (between Grand River and Eleven Mile)	961
60	22	P	South	Eleven Mile	City Project (Clark-Creek Crossing)	244
51	20	S	North	Ten Mile	City Project (Dinser to Woodham)	1780
78c	24	P	South	Grand River	City Project (Olde Orchard to Karim)	279
2020-21 City of Novi Total						8,531
Private Development Projects						
2a (part)	1	S	West	Haggerty	Berkshire E-Supply	808
1a (part)	1	S	South	Fourteen Mile	Speedway	134
2a (part)	1	S	West	Haggerty	Speedway	111
68	23	S	South	Grand River	Jaguar	345
77 (part)	24	S	West	Haggerty Road	Suburban Toyota	1031
88 (part)	26	S	North	Nine Mile	Woodbridge Park	502
31b (part)	16	P	South	Twelve Mile	Amson-Nassar Spec Building	495
17 (part)	11	S	East	Old Novi Road	Lakeview	475
102b	30	S	North	Nine Mile	Terra	469
98b (part)	29	S/P	North	Nine Mile	Terra	787
2020-21 Development Total						5,157

TABLE 3.2: DRAFT 2020-2021 Top 20 Priority Pathway and Sidewalk Segments including deferred segments

Overall Segment Rank	Segment Item #	Section #	Type	Side of Street	Location	From	To	# of Pieces in Segment	Segment Length (ft.) excluding Developer Planned & Completed pieces	Projeted CIP Year
1	80b	24	S	north	Ten Mile	Meadowbrook	Willowbrook Estates	1	198	
2	81a	25	P	south	Ten Mile	Meadowbrook	Willowbrook	1	2,530	21-22
3	38	16	S	east	Beck	Grand River	Eleven Mile	1	2,234	
3	18a	11	S	north	Twelve Mile	Twelve Oaks	Meadowbrook	2	2,613	
5	81b	25	P	south	Ten Mile	Willowbrook	Haggerty	3	2,750	21-22
6	90	26	P	south	Ten Mile	Novi Road	Chipmunk Trail	1	2,400	25-26
7	99a	29	P	south	Ten Mile	Wixom	400' E of Lynwood	2	2,739	25-26
8	93b	27	S	north	Nine Mile	Plaisance	Taft	2	619	
9	66	23	P	south	Grand River	Sixth Gate	Main Street	2	293	
10	93a	27	S	north	Nine Mile	Novi Rd.	Plaisance	1	1,122	
11	68	23	P	south	Grand River	Funeral Home	Meadowbrook	1	457	
12	58a	21	S	east	Beck	Ashley	Cider Mill	1	1,228	
12	58b	21	S	east	Beck	Cider Mill	Sierra	1	2,553	
14	84a	25	S	east	Meadowbrook	Ten Mile	Chattman	1	2,323	
15	18b	11	S	north	Twelve Mile	Novi Rd.	Twelve Oaks	1	2,027	
15	84b	25	S	east	Meadowbrook	Nine Mile	Chattman	1	2,380	
17	82b	25	S	west	Haggerty	Pavilion Ct Apartments	Nine Mile	1	539	
18	153	36	S	east	Haggerty	City limits	Taco Bell	1	501	
19	21a	13	P	south	Twelve Mile	Meadowbrook	Energy Way	2	3,451	
20	52a	20	P	south	Eleven Mile	Wixom	E side ITC Corridor	1	2,566	
21	72	23	P	north	Grand River	Town Center	Amstaff building	1	677	
21	121a	36	P	South	Nine Mile	Meadowbrook	Sunrise	1	2,899	

Legend S= 6 ft. sidewalk P= 8 ft. pathway

 Segments with pathways or sidewalks on most of the opposite side of the street - note that these segments may be critical for system connectivity & must be analyzed separately for connectivity

 Segments which involve a highway crossing or a railroad crossing

 Short Segments  CIP Budget Year  Segments included in last years Top 20  Deferred

TABLE 3.1: Tier and Tier 2 Categories

All proposed adjacent to road pathway & sidewalk segments are reviewed against a set of Tier 1 criteria & assigned points based on the segment's potential service benefits to the citizens of the City, the segments are ranked by the Tier 1 points & the segments receiving the top 20 points are assigned Tier 2 points

TIER 1 CATEGORIES

1 BICYCLE & PED. ACCIDENTS
 (intersection accidents only included when sidewalk or pathway connection is missing)
 5 = 1 accident; 10 = 2 accidents; 15 = 3 accidents
 20 = 4 or more accidents

TRAFFIC SAFETY

Each segment is weighted based on the Counts. The values are then multiplied by a multiplier based on respective speed limits to get the final rating

2 TRAFFIC COUNTS
 (ADT) 2010 Non-Motorized MP

0 = <10K ADT	TRAFFIC SPEED
5 = 10K-20K ADT	< 30 mph = x 1
10 = >20K ADT	35-40 mph = x 1.2
	>=45 mph = x 1.5

ACCESS TO SCHOOLS

All three categories are grouped into one to simplify and avoid double counts.

3 Final rating would be based on number of schools with the same criteria. i.e. # elem & intermediate schools w/in 1 mile and so on)
 4.5 = 1 school
 9 = 2+ schools

(# elem & intermediate schools w/in 1 mile)	(# middle & high schools w/in 2 miles)	(# private schools over 100 students w/in 2 miles)
4.5 = 1 school	4.5 = 1 school	4.5 = 1 school
9 = 2+ schools	9 = 2+ schools	9 = 2+ schools

ACCESS TO PARKS

4 (# w/in 1 mile)
 6 = 1 park;
 12 = 2+ parks

ACCESS TO HOTELS

5 # hotels w/in 1 mile)
 2 = 1 Hotel;
 4 = 2+ Hotels

ACCESS TO SHOPPING

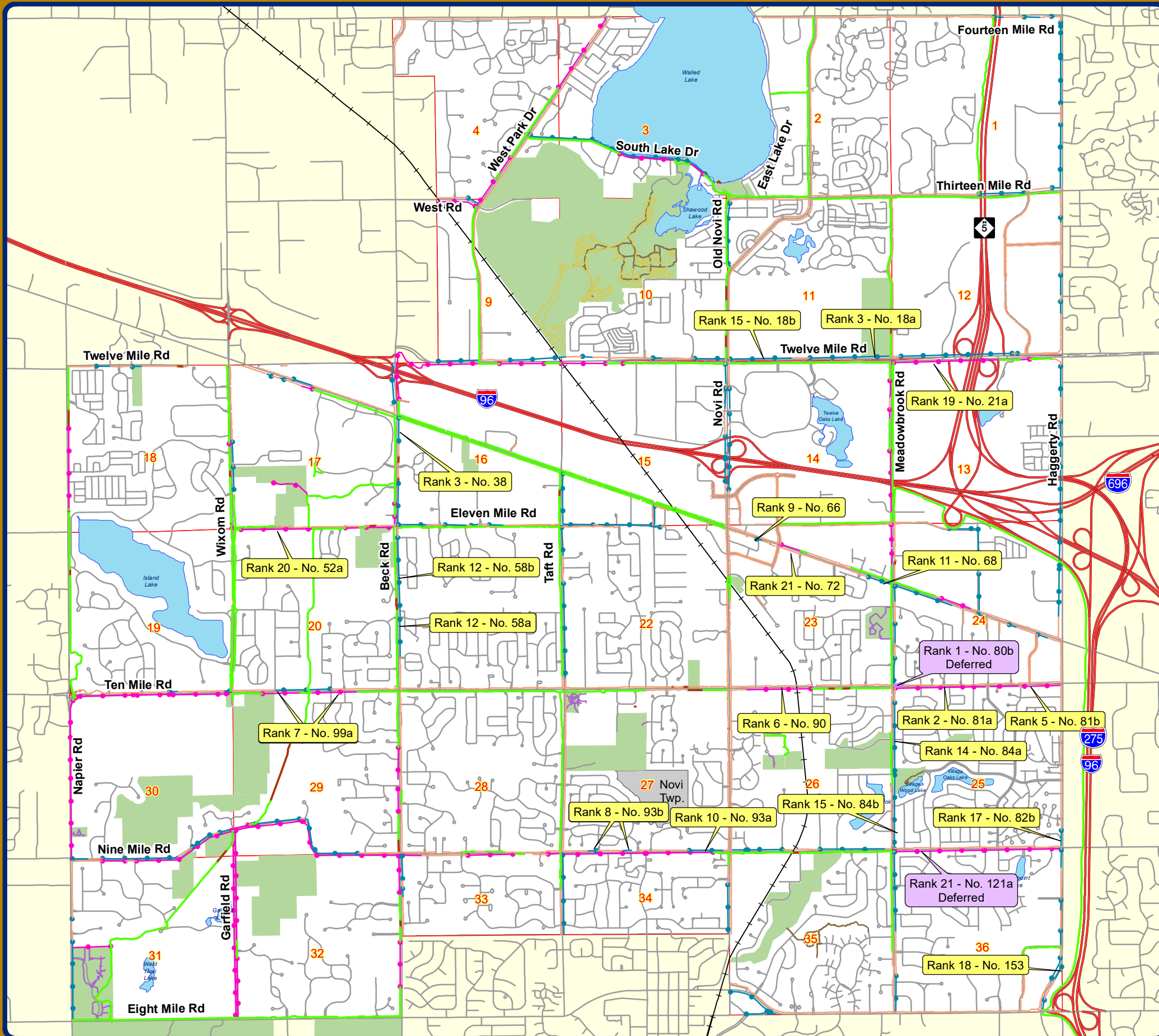
6 (# shopping areas w/in 1 mile)
 3.5 = 1 shopping area; 7 = 2+ shopping areas

ACCESS TO PLACES OF WORSHIP

8 (# places of worship w/in 1 mile)
 2 = 1 places of worship;
 4 = 2+ places of worship

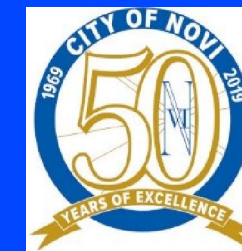
9	CONNECTED TO NEIGHBORING SIDEWALK/ REGIONAL TRAIL SYSTEM 7 = connected to neighboring sidewalk system 14 = connected to regional trail system
10	POPULATION SERVED 0 = low density; 8 = medium density; 16 = high density
11	SEGMENT COMPLETION 5 = ½ to 1 mile; 10 = 1 to 2 miles; 15 = over 2 miles
12	CONSIDERABLE PUBLIC INTEREST 5 = top 15 survey responses, resident petitions & documented segments requested by groups & govt agencies
13	NON-MOTORIZED MASTER PLAN 20 = initial investment 15 = major corridor
TIER 2 CATEGORIES (only Top 20 Tier 1 segments receive tier 2 points)	
1	EASE OF CONSTRUCTION (easy/hard) 0 = hard; 8 = medium hard; 16 = easy
2	RIGHT-OF-WAY AVAILABILITY (based on % available) 0 = 0%; 4.5 = 25%; 9 = 50%; 13.5 = 75%; 18 = 100%
3	OTHER FUNDING SOURCES (based on % available) 0 = 0%; 4.5 = 25%; 9 = 50%; 18 = 80%+
4	OPPOSITE SIDE SIDEWALK OR PATHWAY (road < 12,000 ADT & 35 mph < existing or planned with higher priority ranking) -20 = complete section link ; -10 = one direction section link
5	PRIVATE DEVELOPMENT POTENTIAL (Positive Points) 8 = little potential 4 = partial potential within 10 years 2 = dev potential within 10 years 0 = SP submitted
6	EVIDENCE OF EXTENSIVE PEDESTRIAN USE 0 = No Evidence 10 = Worn Path * This a new category added last year based on previous discussions. Engineering department will perform site visits to identify if pedestrians are using the unbuilt paths.

Map 2: 2020-2021 Top 20 Priority Pathway and Sidewalk Segments



Annual Non-Motorized Prioritization: 2020-2021 Update

- Deferred Segments
- Existing Sidewalks and Pathways**
 - Existing Sidewalk
 - Existing Pathway
- Future Sidewalks and Pathways**
 - Proposed Pathway
 - Proposed Sidewalk
- Existing Off Road Paths & Trails**
 - Paved Path
 - Unpaved Trail
 - Mountain Biking Trail
 - + Railroads Adjoining Novi



City of Novi

Dept. of Community Development
City Hall / Civic Center
45175 W Ten Mile Rd
Novi, MI 48375
cityofnovi.org

Map Author: Jon Gartha
Date: July 9, 2020
Project: 2020 Non-Motorized Update
Version #: 1.0



Miles
1 inch = 0.66 miles

MAP INTERPRETATION NOTICE

Map information depicted is not intended to replace or substitute for any official or primary source. This map was intended to meet National Map Accuracy Standards and use the most recent, accurate sources available to the people of the City of Novi. Boundary measurements and area calculations are approximate and should not be construed as survey measurements performed by a licensed Michigan Surveyor as defined in Michigan Public Act 132 of 1970 as amended. Please contact the City GIS Manager to confirm source and accuracy information related to this map.



City of Novi Annual Non-Motorized Prioritization: 2020-2021 Update

2020 MASTER LIST OF MISSING PATHWAY & SIDEWALK SEGMENTS, MAJOR ROADS										TIER 1 CATEGORIES										TOTAL TIER 1 POINTS	TIER 1 RANKING			
OVERALL SEGMENT RANK	Segment Item #	Section #	S = 6 ft. sidewalk P = 8 ft. pathway	Side of Street	Location	From	TO	# of Pieces in Segment	Segment Length (ft.) excluding Developer Planned & Completed Pieces	CIP Budget Year	Criteria Points													
											BICYCLE & PEDESTRIAN ACCIDENTS (Intersection accidents only included when sidewalk or pathway connection is missing (1/98 to 9/14)	TRAFFIC SAFETY (ADT) 2010 Non-Motorized MP & Traffic Speed	ACCESS TO SCHOOLS (# elem & intermediate schools within 1 mile); (# middle & high schools within 2 miles); (# private schools over 100 students within 2 miles)	ACCESS TO PARKS (# within 1 mile)	ACCESS TO HOTELS (# within 1 mile)	ACCESS TO SHOPPING (# shopping areas within 1 mile)	ACCESS TO PLACES OF WORSHIP (# places of worship within 1 mile)	CONNECTED TO NEIGHBORING SIDEWALK/ REGIONAL TRAIL SYSTEM	POPULATION SERVED			SEGMENT COMPLETION	CONSIDERABLE PUBLIC INTEREST	NON-MOTORIZED MASTER PLAN
											5 points = 1 accident 10 = 2 accidents 15 = 3 accidents 20 = 4 or more accidents	0 = <10K ADTs*, 5 = 10K-20K ADTs 10 = >20K ADTs Then multiplied by 1<35mph, 1.2 for 35-40mph & 1.5 for >45	4.5 = 1 school 9 = 2+ school	6 = 1 park 12 = 2+ parks	3.5 = 1 hotel 7 = 2+ hotels	3.5 = 1 shopping area 7 = 2+ shopping	2 = 1 places of worship 4 = 2+ places of worship	7 = connected to neighboring sidewalk system 14 = connected to regional trail	0 = low density 7 = medium density 14 = high density	5 = 1/2 to 1 mile 10 = 1 - 2 mile 15 = over 2 miles	5 = top 15 survey responses, resident petitions & documented segments requested by groups & govt agencies	20 = initial investment 15 = major corridor		
1	80b	24	S	north	Ten Mile	Meadowbrook	Willowbrook Estates	1	198		10	7.5	9	6	0	7	4	0	14	15	5	20	97.5	1
2	81a	25	P	south	Ten Mile	Meadowbrook	Willowbrook	1	2,530	21-22	20	7.5	9	0	0	7	4	0	14	5	5	20	91.5	2
3	38	16	S	east	Beck	Grand River	Eleven Mile	1	2,234		15	15	9	12	2	3.5	0	14	7	10	0	0	87.5	3
3	18a	11	S	north	Twelve Mile	Twelve Oaks	Meadowbrook	2	2,613		10	7.5	9	12	4	7	2	14	7	15	0	0	87.5	3
5	81b	25	P	south	Ten Mile	Willowbrook	Haggerty	3	2,750	21-22	20	7.5	4.5	0	0	7	4	0	14	5	5	20	87	5
6	90	26	P	south	Ten Mile	Novi Road	Chipmunk Trail	1	2,400	25-26	5	7.5	0	6	0	7	4	0	14	15	5	20	83.5	6
7	99a	29	P	south	Ten Mile	Wixom	400' E of Lynwood	2	2,739	25-26	5	7.5	0	0	0	3.5	4	14	7	15	5	20	81	7
8	93b	27	S	north	Nine Mile	Plaisance	Taft	2	619		10	0	4.5	6	0	3.5	0	0	14	15	5	20	78	8
9	66	23	P	south	Grand River	Sixth Gate	Main Street	2	293		15	7.5	9	6	4	7	0	0	14	15	0	0	77.5	9
10	93a	27	S	north	Nine Mile	Novi Rd.	Plaisance	1	1,122		10	0	0	6	0	7	0	0	14	15	5	20	77	10
11	68	23	P	south	Grand River	Funeral Home	Meadowbrook	1	457		10	7.5	4.5	0	2	7	2	14	14	15	0	0	76	11
12	58a	21	S	east	Beck	Ashley	Cider Mill	1	1,228		0	7.5	9	6	0	3.5	0	14	14	15	5	0	74	12
12	58b	21	S	east	Beck	Cider Mill	Sierra	1	2,553		0	7.5	9	6	0	3.5	0	14	14	15	5	0	74	12
14	84a	25	S	east	Meadowbrook	Ten Mile	Chatman	1	2,323		0	6	9	0	0	7	4	0	14	5	5	20	70	14
15	18b	11	S	north	Twelve Mile	Novi Rd.	Twelve Oaks	1	2,027		10	7.5	4.5	12	4	7	2	0	7	15	0	0	69	15
15	84b	25	S	east	Meadowbrook	Nine Mile	Chatman	1	2,380		0	5	9	0	0	7	4	0	14	5	5	20	69	15
17	82b	25	S	west	Haggerty	Pavilion Ct Apts	Nine Mile	1	539		10	15	0	0	4	0	4	0	14	15	5	0	67	17
18	153	36	S	east	Haggerty	City limits	Taco Bell	1	501		10	15	0	0	0	3.5	0	14	14	10	0	0	66.5	18
19	21a	13	P	south	Twelve Mile	Meadowbrook	Energy Way	2	3,451		20	7.5	9	6	2	0	2	7	7	5	0	0	65.5	19

City of Novi Annual Non-Motorized Prioritization: 2020-2021 Update

2020 MASTER LIST OF MISSING PATHWAY & SIDEWALK SEGMENTS, MAJOR ROADS										TIER 1 CATEGORIES													TOTAL TIER 1 POINTS	TIER 1 RANKING	
OVERALL SEGMENT RANK	Segment Item #	Section #	S= 6 ft. sidewalk P= 8 ft. pathway	Side of Street	Location	From	To	# of Pieces in Segment	Segment Length (ft.) excluding Developer Planned & Completed Pieces	CIP Budget Year	Criteria Points														
											BICYCLE & PEDESTRIAN ACCIDENTS (Intersection accidents only included when sidewalk or pathway connection is missing (1/98 to 9/14)	TRAFFIC SAFETY (ADT) 2010 Non-Motorized MP & Traffic Speed	ACCESS TO SCHOOLS (# elem & intermediate schools within 1 mile); (# middle & high schools within 2 miles); (# private schools over 100 students within 2 miles)	ACCESS TO PARKS (# within 1 mile)	ACCESS TO HOTELS (# within 1 mile)	ACCESS TO SHOPPING (# shopping areas within 1 mile)	ACCESS TO PLACES OF WORSHIP (# places of worship within 1 mile)	CONNECTED TO NEIGHBORING SIDEWALK/ REGIONAL TRAIL SYSTEM	POPULATION SERVED	SEGMENT COMPLETION	CONSIDERABLE PUBLIC INTEREST	NON-MOTORIZED MASTER PLAN			
											points available per category														
											5 points = 1 accident 10 = 2 accidents 15 = 3 accidents 20 = 4 or more accidents	0 = <10K ADTs*, 5 = 10K-20K ADTs 10 = >20K ADTs then multiplied by 1.2 for 35-40mph & 1.5 for >45	4.5 = 1 school 9 = 2+ school	6 = 1 park 12 = 2+ parks	3.5 = 1 hotel 7 = 2+ hotels	3.5 = 1 shopping area 7 = 2+ shopping	2 = 1 places of worship 4 = 2+ places of worship	7 = connected to neighboring sidewalk system 14 = connected to regional trail	0 = low density 7 = medium density 14 = high density	5 = 1/2 to 1 mile 10 = 1 - 2 mile 15 = over 2 miles	5 = top 15 survey responses, resident petitions & documented segments requested by groups & govt agencies	20 = initial investment 15 = major corridor			
20	52a	20	P	south	Eleven Mile	Wixom	E side ITC Corridor	2	2,566		0	0	9	12	2	3.5	2	14	7	10	5	0	64.5	20	
21	72	23	P	north	Grand River	Town Center	Amstaff building	1	677		10	7.5	0	6	4	7	0	0	14	15	0	0	63.5	21	
21	121a	36	P	south	Nine Mile	Meadowbrook	Sunrise	1	2,899		5	0	4.5	6	0	0	4	0	14	5	5	20	63.5	21	
23	64	22	S	east	Taft	Ten Mile	Eleven Mile	2	4,218		5	0	9	12	2	0	4	0	14	10	5	0	61	23	
24	97b	29	P	west	Beck	Cheltenham	Iriquois	1	1,059		15	7.5	4.5	0	0	3.5	4	14	7	5	0	0	60.5	24	
25	41	17	S	east	Wixom	Target	Deerfield Elementary	2	1,401		5	5	9	12	2	3.5	0	0	3.5	15	5	0	60	25	
25	168	14	P	east	Novi Rd.	across 96	Chick fil A	1	2,100		0	15	0	0	4	7	0	0	14	15	5	0	60	25	
25	119a	36	S	east	Meadowbrook	Nine Mile	Singh Blvd	1	1,075		5	0	0	12	0	0	4	0	14	0	5	20	60	25	
25	119c	36	S	east	Meadowbrook	Eight Mile	N of Llewelyn	1	1,191		5	0	0	0	2	0	4	0	14	10	5	20	60	25	
29	6a	4	P	west	West Park	Pontiac Trail	45182 West Park Dr	1	418		20	0	4.5	0	0	3.5	2	0	14	10	5	0	59	29	
29	6b	4	P	west	West Park	45182 West Park Dr	Bristol Corners	1	1,780		20	0	4.5	0	0	3.5	2	0	14	10	5	0	59	29	
31	79a	24	S	east	Meadowbrook	Ten Mile	Clermont Ave	1	526		10	6	4.5	0	0	7	4	0	7	15	5	0	58.5	31	
31	79b	24	S	east	Meadowbrook	Clermont Avenue	Scarborough Lane	1	661		10	6	4.5	0	0	7	4	0	7	15	5	0	58.5	31	
31	79c	24	S	east	Meadowbrook	Scarborough Lane	Grand River		872		10	6	4.5	0	0	7	4	0	7	15	5	0	58.5	31	
34	44	18	P	east	Napier	Knights Bridge	Island Lake	1	2,626		10	0	0	6	0	0	0	0	7	15	0	20	58	34	
35	121b	36	P	south	Nine Mile	Sunrise	Haggerty	1	2,482		5	0	4.5	0	0	0	4	0	14	5	5	20	57.5	35	
36	88	26	S	north	Nine Mile	Heslip	Shiro	1	1,066		10	0	0	12	0	7	4	0	14	10	0	0	57	36	
36	32a	15	S	west	Novi Rd.	Twelve Mile	West Oaks	2	1,347		15	15	0	6	4	7	0	0	0	5	5	0	57	36	
36	52b	20	P	south	Eleven Mile	Oberlin	Bosco	1	481		0	0	9	12	0	0	0	14	7	10	5	0	57	36	
39	51	20	S	north	Ten Mile	Dinser	Woodham	1	1,799	20-21	0	7.5	0	6	0	0	2	14	7	15	5	0	56.5	39	

City of Novi Annual Non-Motorized Prioritization: 2020-2021 Update

2020 MASTER LIST OF MISSING PATHWAY & SIDEWALK SEGMENTS, MAJOR ROADS										TIER 1 CATEGORIES												TOTAL TIER 1 POINTS	TIER 1 RANKING	
OVERALL SEGMENT RANK	Segment Item #	Section #	S = 6 ft. sidewalk P = 8 ft. pathway	Side of Street	Location	From	To	# of Pieces in Segment	Segment Length (ft.) excluding Developer Planned & Completed Pieces	CIP Budget Year	Criteria Points													
											BICYCLE & PEDESTRIAN ACCIDENTS (Intersection accidents only included when sidewalk or pathway connection is missing (1/98 to 9/14)	TRAFFIC SAFETY (ADT) 2010 Non-Motorized IMP & Traffic Speed	ACCESS TO SCHOOLS (# elem & intermediate schools within 1 mile); (# middle & high schools within 2 miles); (# private schools over 100 students within 2 miles)	ACCESS TO PARKS (# within 1 mile)	ACCESS TO HOTELS (# within 1 mile)	ACCESS TO SHOPPING (# shopping areas within 1 mile)	ACCESS TO PLACES OF WORSHIP (# places of worship within 1 mile)	CONNECTED TO NEIGHBORING SIDEWALK/ REGIONAL TRAIL SYSTEM	POPULATION SERVED	SEGMENT COMPLETION	CONSIDERABLE PUBLIC INTEREST			NON-MOTORIZED MASTER PLAN
											5 points = 1 accident 10 = 2 accidents 15 = 3 accidents 20 = 4 or more accidents	0 = <10K ADTs*, 5 = 10K-20K ADTs 10 = >20K ADTs Then multiplied by 1<35mph, 1.2 for 35-40mph & 1.5 for >45	4.5 = 1 school 9 = 2+ school	6 = 1 park 12 = 2+ parks	3.5 = 1 hotel 7 = 2+ hotels	3.5 = 1 shopping area 7 = 2+ shopping	2 = 1 places of worship 4 = 2+ places of worship	7 = connected to neighboring sidewalk system 14 = connected to regional trail	0 = low density 7 = medium density 14 = high density	5 = 1/2 to 1 mile 10 = 1 - 2 mile 15 = over 2 miles	5 = top 15 survey responses, resident petitions & documented segments requested by groups & govt agencies	20 = initial investment 15 = major corridor		
40	115	34	S	west	Novi Rd.	Timber Ridge develop	City Limits	1	1,591		5	7.5	4.5	6	0	7	0	0	14	10	0	0	54	40
40	30a	14	P	west	Meadowbrook	26901 Meadowbrook	41500 Gardenbrook Rd(I-96	1	2,034		5	6	9	6	4	7	0	7	0	10	0	0	54	40
42	119b	36	S	east	Meadowbrook	Singh Blvd	N of Llewelyn	1	1,438		5	0	0	0	0	0	4	0	14	5	5	20	53	42
42	25a	13	S	west	Haggerty	Twelve Mile	Novi Research Park	1	1,019		0	7.5	4.5	0	2	0	0	0	14	5	0	20	53	42
42	25b	13	S	west	Haggerty	Novi Research Park	section line	1	3,167		0	7.5	4.5	0	2	0	0	0	14	5	0	20	53	42
45	150	17	s	north	Grand River	Sams Way	Providence	2	681		0	7.5	0	6	2	7	0	0	0	15	0	15	52.5	45
46	169	17	S	west	Beck Road	Grand River	across I-96	1	1,314		5	15	0	0	0	7	0	0	0	5	5	15	52	46
46	176	16	P	south	Twelve Mile	46675 Twelve Mile Rd	I-96	1	1,669		5	15	0	0	0	7	0	0	0	5	5	15	52	46
46	177	16	P	west	Beck/I-96	I-96 ROW		2	2,802		5	15	0	0	0	7	0	0	0	5	5	15	52	46
46	52c	20	P	south	Eleven Mile	Beck	Entrance to Bosco Park	1	915		0	0	9	12	0	0	0	14	7	5	5	0	52	46
50	40	17	P	south	Grand River	Providence Hospital	Wixom	3	843		5	7.5	4.5	12	2	0	0	0	0	15	5	0	51	50
51	19a	12	S	north	Twelve Mile	27925 Summit Dr	40020 Twelve Mile Rd	1	2,519		5	7.5	9	6	2	0	2	14	0	5	0	0	50.5	51
51	19b	12	S	north	Twelve Mile	ITC Corridor		1	100		5	7.5	9	6	2	0	2	14	0	5	0	0	50.5	51
53	75	24	P	north	Grand River	Seeley	Meadowbrook	1	1,038		10	7.5	4.5	0	2	7	2	0	7	10	0	0	50	53
53	173	36	S	west	Haggerty	Eight Mile	Big Boy Restaurant	1	349		0	0	13.5	0	4	3.5	0	14	0	15	0	0	50	53
53	30b	14	P	west	Meadowbrook	27551 Meadowbrook	27421 Meadowbrook Rd	2	910		5	6	9	6	0	7	0	7	0	10	0	0	50	53
56	37a	16	S	north	Eleven Mile	Beck	Mandalay Cir E	3	2,392		0	0	9	12	0	0	4	7	7	5	5	0	49	56
57	87	26	S	north	Nine Mile	Meadowbrook	Venture	1	2,128		0	0	4.5	6	0	7	2	0	14	10	5	0	48.5	57
57	112	33	S	east	Beck	Nine Mile	City Limits	2	1,114		10	15	4.5	0	0	0	0	0	14	5	0	0	48.5	57
57	21b	13	P	south	Twelve Mile	Energy Way	Haggerty	1	335		15	7.5	9	6	2	0	2	0	7	0	0	0	48.5	57
57	31a	15	S	south	Twelve Mile	Cabaret Dr	Hino Motors (railroad crossi	1	1,585		15	7.5	0	0	4	7	0	0	0	10	5	0	48.5	57

City of Novi Annual Non-Motorized Prioritization: 2020-2021 Update

2020 MASTER LIST OF MISSING PATHWAY & SIDEWALK SEGMENTS, MAJOR ROADS										TIER 1 CATEGORIES															
OVERALL SEGMENT RANK	Segment Item #	Section #	S= 6 ft. sidewalk P= 8 ft. pathway	Side of Street	Location	From	To	# of Pieces in Segment	Segment Length (ft.) excluding Developer Planned & Completed Pieces	CIP Budget Year	Criteria Points													TOTAL TIER 1 POINTS	TIER 1 RANKING
											BICYCLE & PEDESTRIAN ACCIDENTS (Intersection accidents only included when sidewalk or pathway connection is missing (1/98 to 9/14)	TRAFFIC SAFETY (ADT) 2010 Non-Motorized IMP & Traffic Speed	ACCESS TO SCHOOLS (# elem & intermediate schools within 1 mile); (# middle & high schools within 2 miles); (# private schools over 100 students within 2 miles)	ACCESS TO PARKS (# within 1 mile)	ACCESS TO HOTELS (# within 1 mile)	ACCESS TO SHOPPING (# shopping areas within 1 mile)	ACCESS TO PLACES OF WORSHIP (# places of worship within 1 mile)	CONNECTED TO NEIGHBORING SIDEWALK/ REGIONAL TRAIL SYSTEM	POPULATION SERVED	SEGMENT COMPLETION	CONSIDERABLE PUBLIC INTEREST	NON-MOTORIZED MASTER PLAN			
											points available per category														
											5 points = 1 accident 10 = 2 accidents 15 = 3 accidents 20 = 4 or more accidents	0 = <10K ADTs*, 5 = 10K-20K ADTs 10 = >20K ADTs then multiplied by 1.2 for 35-40mph & 1.5 for >45	4.5 = 1 school 9 = 2+ school	6 = 1 park 12 = 2+ parks	3.5 = 1 hotel 7 = 2+ hotels	3.5 = 1 shopping area 7 = 2+ shopping	2 = 1 places of worship 4 = 2+ places of worship	7 = connected to neighboring sidewalk system 14 = connected to regional trail	0 = low density 7 = medium density 14 = high density	5 = 1/2 to 1 mile 10 = 1 - 2 mile 15 = over 2 miles	5 = top 15 survey responses, resident petitions & documented segments requested by groups & govt agencies	20 = initial investment 15 = major corridor			
61	37b	16	S	north	Eleven Mile	Mandalay Cir E	Taft	1	496		0	0	9	6	2	0	4	0	7	15	5	0	48	61	
62	97a	29	P	west	Beck	Nine Mile	Cheltenham	1	858		15	7.5	4.5	0	0	3.5	4	0	7	5	0	0	46.5	62	
62	98a	29	S	north	Nine Mile	Kensington	Vasilios Court	1	2,589		0	0	4.5	6	0	0	0	14	7	10	5	0	46.5	62	
62	98b	29	S	north	Nine Mile	Vasilios Court	ITC comfort station at Terra	2	2,167		0	0	4.5	6	0	0	0	14	7	10	5	0	46.5	62	
65	35	15	S	east	Taft	Eleven Mile	Grand River	2	1,648		0	0	9	0	4	7	4	0	7	10	5	0	46	65	
66	17	11	S	east	Old Novi	Linhart Avenue	Novi Road	1	1,611		5	0	4.5	12	2	0	0	0	7	15	0	0	45.5	66	
67	78a	24	P	south	Grand River	Meadowbrook	Joseph	1	1,967		10	7.5	4.5	6	2	7	0	0	7	0	0	0	44	67	
68	31b	16	S	south	Twelve Mile	Hino Motors	West Park Drive	1	954		15	7.5	0	0	4	7	0	0	0	5	5	0	43.5	68	
69	28	14	P	east	Novi Rd.	south Twelve Oaks	North Twelve Oaks entrance	2	988		0	7.5	9	0	4	7	0	0	0	10	5	0	42.5	69	
70	106b	31	P	west	Garfield	Deer Run	Nine Mile	1	2,659		5	0	0	18	0	0	0	14	0	5	0	0	42	70	
71	102b	30	S	north	Nine Mile	E of Evergreen Ct	Garfield	3	571		0	0	0	12	0	0	0	14	0	15	0	0	41	71	
71	116a	34	P	south	Nine Mile	Chelsea	Center	1	2,183		10	0	0	0	0	7	0	0	14	5	5	0	41	71	
73	116b	34	P	south	Nine Mile	Center	Taft	1	2,682		5	0	4.5	0	0	7	0	0	14	5	5	0	40.5	73	
74	111a	32	P	south	Nine Mile	Beck	Garfield Conservation area	1	2,654		5	0	4.5	6	0	0	0	14	0	5	5	0	39.5	74	
74	111b	32	P	west	Nine Mile	Garfield Conservation	Vasilios Court	1	1,224		5	0	4.5	6	0	0	0	14	0	5	5	0	39.5	74	
74	111c	32	P	south	Nine Mile	Vasilios Court	Garfield	1	2,109		5	0	4.5	6	0	0	0	14	0	5	5	0	39.5	74	
74	162a	3	S	north	South Lake	West Park	E of Lilley Trail	1	2,000		0	0	0	12	0	3.5	0	0	14	10	0	0	39.5	74	
78	3a	1	S	north	Thirteen Mile	Haggerty Rd.	39550 Thirteen Mile Rd	1	288		0	0	4.5	0	0	0	2	0	7	10	0	15	38.5	78	
78	3b	1	S	north	Thirteen Mile	Cabot Drive	M-s (crossing)	1	1,512		0	0	4.5	0	0	0	2	0	7	10	0	15	38.5	78	
80	171	35	P	south	Eight Mile	Griswold	City Limits	1	1,439		0	15	9	0	0	7	0	0	7	0	0	0	38	80	
80	174	35	P	south	Griswold	Eight Mile	City Limits	1	143		0	15	9	0	0	7	0	0	7	0	0	0	38	80	

City of Novi Annual Non-Motorized Prioritization: 2020-2021 Update

2020 MASTER LIST OF MISSING PATHWAY & SIDEWALK SEGMENTS, MAJOR ROADS										TIER 1 CATEGORIES															
OVERALL SEGMENT RANK	Segment Item #	Section #	S= 6 ft. sidewalk P= 8 ft. pathway	Side of Street	Location	From	To	# of Pieces in Segment	Segment Length (ft.) excluding Developer Planned & Completed Pieces	CIP Budget Year	Criteria Points													TOTAL TIER 1 POINTS	TIER 1 RANKING
											BICYCLE & PEDESTRIAN ACCIDENTS (Intersection accidents only included when sidewalk or pathway connection is missing (1/98 to 9/14)	TRAFFIC SAFETY (ADT) 2010 Non-Motorized IMP & Traffic Speed	ACCESS TO SCHOOLS (# elem & intermediate schools within 1 mile); (# middle & high schools within 2 miles); (# private schools over 100 students within 2 miles)	ACCESS TO PARKS (# within 1 mile)	ACCESS TO HOTELS (# within 1 mile)	ACCESS TO SHOPPING (# shopping areas within 1 mile)	ACCESS TO PLACES OF WORSHIP (# places of worship within 1 mile)	CONNECTED TO NEIGHBORING SIDEWALK/ REGIONAL TRAIL SYSTEM	POPULATION SERVED	SEGMENT COMPLETION	CONSIDERABLE PUBLIC INTEREST	NON-MOTORIZED MASTER PLAN			
											5 points = 1 accident 10 = 2 accidents 15 = 3 accidents 20 = 4 or more accidents	0 = <10K ADTs*, 5 = 10K-20K ADTs 10 = >20K ADTs then multiplied by 1.2 for 35-40mph & 1.5 for >45	4.5 = 1 school 9 = 2+ school	6 = 1 park 12 = 2+ parks	3.5 = 1 hotel 7 = 2+ hotels	3.5 = 1 shopping area 7 = 2+ shopping	2 = 1 places of worship 4 = 2+ places of worship	7 = connected to neighboring sidewalk system 14 = connected to regional trail	0 = low density 7 = medium density 14 = high density	5 = 1/2 to 1 mile 10 = 1 - 2 mile 15 = over 2 miles	5 = top 15 survey responses, resident petitions & documented segments requested by groups & govt agencies	20 = initial investment 15 = major corridor			
80	175	35	P	south	Eight Mile	Griswold	City Limits	1	228		0	15	9	0	0	7	0	0	7	0	0	0	38	80	
80	101a	30	P	east	Napier	Links of Novi	Nine Mile	1	4,127		0	0	0	12	0	0	2	14	0	10	0	0	38	80	
84	149	15	P	east	Clark	Eleven Mile	Grand River	1	601		0	0	9	0	0	7	4	0	7	10	0	0	37	84	
84	102a	30	S	north	Nine Mile	Napier	W of Evergreen Ct	2	3,012		0	0	0	18	0	0	0	14	0	5	0	0	37	84	
86	77b	24		west	Haggerty	Grand River	Regency Drive	1	499		5	7.5	0	0	0	7	0	0	7	10	0	0	36.5	86	
87	45	18	S	south	Twelve Mile	Northwest Neighborhood Park		1	332	23-24	0	0	9	6	2	7	0	0	7	5	0	0	36	87	
87	178	18	S	south	Twelve Mile	Albert	Pinewood Drive	1	477	25-26	0	0	9	6	2	7	0	0	7	5	0	0	36	87	
87	14a	10	S	north	Twelve Mile	Carlton Forest	BP	1	997		5	0	0	0	4	7	0	0	0	15	5	0	36	87	
87	78b	24	P	south	Grand River	Joseph	Bashian	1	290		10	7.5	4.5	0	0	7	0	0	7	0	0	0	36	87	
87	78d	24	P	south	Grand River	Karim	Haggerty	1	383		10	7.5	4.5	0	0	7	0	0	7	0	0	0	36	87	
92	11	9	S	north	Twelve Mile	Novi Concrete	West Park	1	1,334		0	7.5	0	0	2	0	0	0	5	5	15	0	34.5	92	
92	104	31	P	east	Napier	Eight Mile	Community Sports Park	1	2,552		0	0	0	12	0	3.5	0	14	0	5	0	0	34.5	92	
92	110a	32	P	west	Beck	Eight Mile	Casa Loma	1	1,473		10	15	4.5	0	0	0	0	0	5	0	0	0	34.5	92	
92	12b	9	S	north	Twelve Mile	Liberty Park	Liberty Park	1	349		10	7.5	0	0	2	0	0	0	10	5	0	0	34.5	92	
96	110b	32	P	west	Beck	Casa Loma	Nine Mile	2	1,257		10	15	9	0	0	0	0	0	0	0	0	0	34	96	
97	113a	33	P	south	Nine Mile	Beck	Barclay	1	641		5	0	4.5	0	0	0	0	14	5	5	0	0	33.5	97	
97	113b	33	P	south	Nine Mile	Galway	Anna Maria	1	1,537		5	0	4.5	0	0	0	0	14	5	5	0	0	33.5	97	
99	114b	34	S	east	Taft	Nine Mile	Byrne	1	1,423		0	0	9	0	0	0	0	14	10	0	0	0	33	99	
100	159	19	S	north	Ten Mile	Oak Point Church	Oak Point Church	1	301		0	7.5	4.5	0	0	0	2	0	3.5	15	0	0	32.5	100	
101	107	31	P	south	Nine Mile	Garfield	Hillside	3	4,157		0	0	0	18	0	0	0	14	0	0	0	0	32	101	
102	49	19	S	north	Ten Mile	Wixom	Island Lake	1	203	23-24	0	7.5	0	0	0	0	2	0	7	15	0	0	31.5	102	

City of Novi Annual Non-Motorized Prioritization: 2020-2021 Update

2020 MASTER LIST OF MISSING PATHWAY & SIDEWALK SEGMENTS, MAJOR ROADS										TIER 1 CATEGORIES													TOTAL TIER 1 POINTS	TIER 1 RANKING	
OVERALL SEGMENT RANK	Segment Item #	Section #	S = 6 ft. sidewalk P = 8 ft. pathway	Side of Street	Location	From	To	# of Pieces in Segment	Segment Length (ft.) excluding Developer Planned & Completed Pieces	CIP Budget Year	Criteria Points														
											BICYCLE & PEDESTRIAN ACCIDENTS (Intersection accidents only included when sidewalk or pathway connection is missing (1/98 to 9/14)	TRAFFIC SAFETY (ADT) 2010 Non-Motorized IMP & Traffic Speed	ACCESS TO SCHOOLS (# elem & intermediate schools within 1 mile); (# middle & high schools within 2 miles); (# private schools over 100 students within 2 miles)	ACCESS TO PARKS (# within 1 mile)	ACCESS TO HOTELS (# within 1 mile)	ACCESS TO SHOPPING (# shopping areas within 1 mile)	ACCESS TO PLACES OF WORSHIP (# places of worship within 1 mile)	CONNECTED TO NEIGHBORING SIDEWALK/ REGIONAL TRAIL SYSTEM	POPULATION SERVED	SEGMENT COMPLETION	CONSIDERABLE PUBLIC INTEREST	NON-MOTORIZED MASTER PLAN			
											points available per category														
											5 points = 1 accident 10 = 2 accidents 15 = 3 accidents 20 = 4 or more accidents	0 = <10K ADTs, 5 = 10K-20K ADTs 10 = >20K ADTs Then multiplied by 1<35mph, 1.2 for 35-40mph & 1.5 for >45	4.5 = 1 school 9 = 2+ school	6 = 1 park 12 = 2+ parks	3.5 = 1 hotel 7 = 2+ hotels	3.5 = 1 shopping area 7 = 2+ shopping	2 = 1 places of worship 4 = 2+ places of worship	7 = connected to neighboring sidewalk system 14 = connected to regional trail	0 = low density 7 = medium density 14 = high density	5 = 1/2 to 1 mile 10 = 1 - 2 mile 15 = over 2 miles	5 = top 15 survey responses, resident petitions & documented segments requested by groups & govt agencies	20 = initial investment 15 = major corridor			
102	1a	1	S	south	Fourteen Mile	Haggerty Rd.	Berkshire	1	595		0	7.5	0	0	0	0	2	0	7	10	5	0	31.5	102	
102	1b	1	S	south	Fourteen Mile	Berkshire	M-5 (crossing)	1	295		0	7.5	0	0	0	0	2	0	7	10	5	0	31.5	102	
105	26	13	S	north	Eleven Mile	Campus Tech	Seeley	1	966		0	0	4.5	0	2	3.5	0	7	14	0	0	0	31	105	
105	101b	30	P	east	Napier	Ten Mile	Links of Novi	1	1,015		0	0	0	12	0	0	0	14	0	5	0	0	31	105	
107	74	24	S	east	Seeley	Eleven Mile	Grand River	1	2,338		0	0	4.5	0	0	7	0	0	14	5	0	0	30.5	107	
107	163	3	P	north	South Lake	Lakeshore Park	Pavilion Shore	1	1,180		0	0	4.5	12	0	0	0	0	14	0	0	0	30.5	107	
107	164	3	P	south	South Lake	Lakeshore Park	Elm Court	1	720		0	0	4.5	12	0	0	0	0	14	0	0	0	30.5	107	
110	108a	32	S	east	Garfield	Eight Mile	Chianti	1	1,941		5	0	0	18	0	0	0	7	0	0	0	0	30	110	
110	108b	32	S	east	Garfield	Chianti	Nine Mile	1	3,558		5	0	0	18	0	0	0	7	0	0	0	0	30	110	
112	12a	9	S	north	Twelve Mile	West Park (railroad)	Liberty Park	1	1,373			7.5	0	0	2	0	0	0	0	15	5	0	29.5	112	
113	34	15	S	north	Eleven Mile	Clark	Taft	2	2,770		0	0	9	0	2	7	4	0	7	0	0	0	29	113	
114	113c	33	P	south	Nine Mile	Anna Maria	Taft	1	410		5	0	4.5	0	0	0	0	0	14	0	5	0	28.5	114	
115	106a	31	P	west	Garfield	Eight Mile	Deer Run	1	3,006		5	0	0	18	0	0	0	0	0	5	0	0	28	115	
116	77a	24	S	west	Haggerty	Regency	Section Line	1	1,037		5	7.5	0	0	0	7	0	0	7	0	0	0	26.5	116	
117	20b	12	S	west	Haggerty	29199 Haggerty Rd	29199 Haggerty Rd	4	188		0	0	6.75	6	0	3.5	0	0	0	5	5	0	26.25	117	
118	165	3	P	south	South Lake	Henning	Lakeshore Park	1	1,580		0	0	0	12	0	0	0	0	14	0	0	0	26	118	
118	162b	3	S	north	South Lake	E of Lilley Trail	Lakeshore Park	1	3,182		0	0	0	12	0	0	0	0	14	0	0	0	26	118	
120	8	4	P	west	West Park	Bristol Corners	West	2	1,648		0	0	0	6	0	0	0	0	14	5	0	0	25	120	
121	114a	34	S	east	Taft	Byrne	City Limits	1	1,113		0	0	9	0	0	0	0	0	14	0	0	0	23	121	
122	155	30	P	south	Ten Mile	Links of Novi		1	1,693		0	7.5	0	6	0	0	4	0	3.5	0	0	0	21	122	
122	172	35	P	west	Griswold	Eight Mile	City Limits	1	727		5	0	9	0	0	0	0	0	7	0	0	0	21	122	

City of Novi Annual Non-Motorized Prioritization: 2020-2021 Update

2020 MASTER LIST OF MISSING PATHWAY & SIDEWALK SEGMENTS, MAJOR ROADS										TIER 1 CATEGORIES												TOTAL TIER 1 POINTS	TIER 1 RANKING	
OVERALL SEGMENT RANK	Segment Item #	Section #	S = 6 ft. sidewalk P = 8 ft. pathway	Side of Street	Location	From	To	# of Pieces in Segment	Segment Length (ft.) excluding Developer Planned & Completed Pieces	CIP Budget Year	BICYCLE & PEDESTRIAN ACCIDENTS (Intersection accidents only included when sidewalk or pathway connection is missing (1/98 to 9/14)	TRAFFIC SAFETY (ADI) 2010 Non-Motorized MP & Traffic Speed	ACCESS TO SCHOOLS (# elem & intermediate schools within 1 mile); (# middle & high schools within 2 miles); (# private schools over 100 students within 2 miles)	ACCESS TO PARKS (# within 1 mile)	ACCESS TO HOTELS (# within 1 mile)	ACCESS TO SHOPPING (# shopping areas within 1 mile)	ACCESS TO PLACES OF WORSHIP (# places of worship within 1 mile)	CONNECTED TO NEIGHBORING SIDEWALK/REGIONAL TRAIL SYSTEM	POPULATION SERVED	SEGMENT COMPLETION	CONSIDERABLE PUBLIC INTEREST			NON-MOTORIZED MASTER PLAN
											points available per category													
											5 points = 1 accident 10 = 2 accidents 15 = 3 accidents 20 = 4 or more accidents	0 = <10K ADTs*, 5 = 10K-20K ADTs 10 = >20K ADTs Then multiplied by 1.2 for 35-40mph & 1.5 for >>45	4.5 = 1 school 9 = 2+ school	6 = 1 park 12 = 2+ parks	3.5 = 1 hotel 7 = 2+ hotels	3.5 = 1 shopping area 7 = 2+ shopping	2 = 1 places of worship 4 = 2+ places of worship	7 = connected to neighboring sidewalk system 14 = connected to regional trail	0 = low density 7 = medium density 14 = high density	5 = 1/2 to 1 mile 10 = 1 - 2 mile 15 = over 2 miles	5 = top 15 survey responses, resident petitions & documented segments requested by groups & govt agencies	20 = initial investment 15 = major corridor		
122	14b	10	S	north	Twelve Mile	Stoneridge	end of adjacent parcel	1	329		5	0	0	0	4	7	0	0	0	5	0	0	21	122
125	158	30	P	east	Napier	Links of Novi		1	1,321		0	0	0	12	0	0	4	0	3.5	0	0	19.5	125	
125	2a	1	S	west	Haggerty	Berkshire	39500 Mackenzie Dr	1	1,518		0	7.5	0	0	0	0	0	0	7	5	0	0	19.5	125
125	2b	1	S	west	Haggerty	Thirteen Mile	39525 McKenzie Drive	1	2,090		0	7.5	0	0	0	0	0	0	7	5	0	0	19.5	125
125	2c	1	S	west	Haggerty	Speedway	50-22-01-200-039	1	215		0	7.5	0	0	0	0	0	0	7	5	0	0	19.5	125
129	20a	12	S	west	Haggerty	39600 Lewis Dr	Twelve Mile	2	1,795		0	7.5	4.5	0	2	0	0	0	0	5	0	0	19	129
130	167	9	P	south	West	West Park	City Limits	1	1,312		0	0	0	6	0	3.5	0	0	0	5	0	0	14.5	130
131	156	30	P	south	Ten Mile	50577 Ten Mile Road	50155 Ten Mile Road	1	1,007		0	7.5	0	0	0	0	2	0	3.5	0	0	0	13	131
131	157	30	P	south	Ten Mile	50155 Ten Mile Road	200' west of Wixom	1	1,709		0	7.5	0	0	0	0	2	0	3.5	0	0	0	13	131
133	100a	30	P	south	Ten Mile	Wixom	Fire Station 4 Parkland	4	143		0	7.5	0	0	0	0	2	0	0	0	0	0	9.5	133
133	100b	30	P	south	Ten Mile	50155 TEN MILE RD		1	148		0	7.5	0	0	0	0	2	0	0	0	0	0	9.5	133
133	100c	30	P	south	Ten Mile	50577 TEN MILE RD		1	148		0	7.5	0	0	0	0	2	0	0	0	0	0	9.5	133
133	100d	30	P	south	Ten Mile	51395 TEN MILE RD	Napier	1	147		0	7.5	0	0	0	0	2	0	0	0	0	0	9.5	133
137	170	4	S	north	West	West Park	American Interiors	1	389		0	0	0	6	0	0	0	0	0	0	0	0	6	137

Total 196,665

Segments with existing pathways or sidewalks on most of the opposite side of the street - note that these segments may be critical for system connectivity & must be analyzed separately for connectivity

Segments which would require construction of a highway or railway crossing for completion.

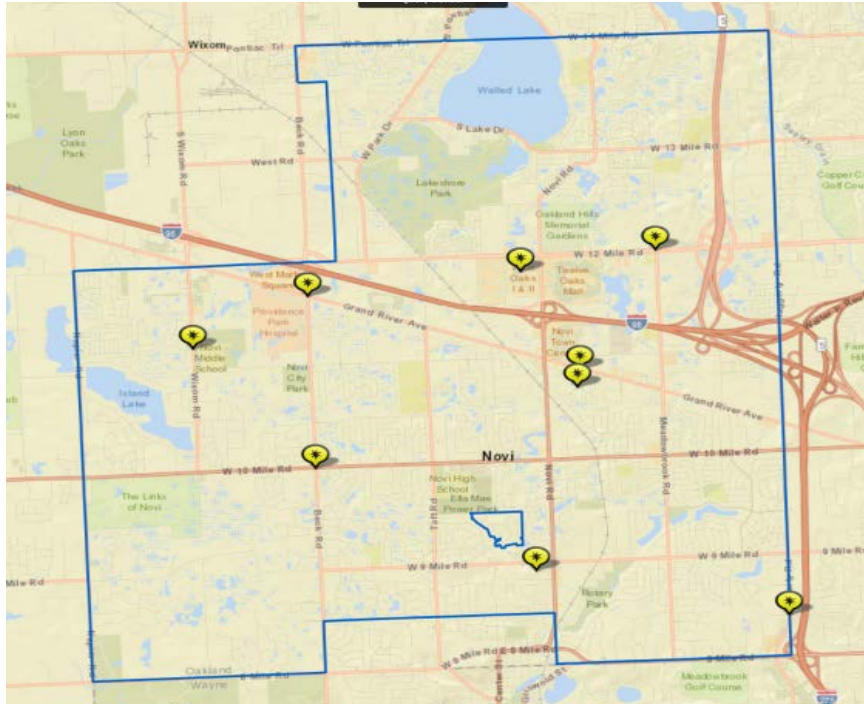
2020 MASTER LIST OF MISSING PATHWAY & SIDEWALK SEGMENTS, MAJOR ROADS										TIER 1 CATEGORIES												
										Criteria Points												
OVERALL SEGMENT RANK	Segment Item #	Section #	S= 6 ft. sidewalk P= 8 ft. pathway	Side of Street	Location	From	To	# of Pieces in Segment	Segment Length (ft.) excluding Developer Planned & Completed Pieces	CIP Budget Year	BICYCLE & PEDESTRIAN ACCIDENTS (Intersection accidents only included when sidewalk or pathway connection is missing (1/98 to 9/14)	TRAFFIC SAFETY (ADT) 2010 Non-Motorized IMP & Traffic Speed	ACCESS TO SCHOOLS (# elem & intermediate schools within 1 mile); (# middle & high schools within 2 miles); (# private schools over 100 students within 2 miles)	ACCESS TO PARKS (# within 1 mile)	ACCESS TO HOTELS (# within 1 mile)	ACCESS TO SHOPPING (# shopping areas within 1 mile)	ACCESS TO PLACES OF WORSHIP (# places of worship within 1 mile)	CONNECTED TO NEIGHBORING SIDEWALK/ REGIONAL TRAIL SYSTEM	POPULATION SERVED	SEGMENT COMPLETION	CONSIDERABLE PUBLIC INTEREST	NON-MOTORIZED MASTER PLAN
											points available per category											
										5 points = 1 accident 10 = 2 accidents 15 = 3 accidents 20 = 4 or more accidents	0 = <10K ADTs*, 5 = 10K-20K ADTs 10 = >20K ADTs Then multiplied by 1.2 for 35-40mph & 1.5 for >45	4.5 = 1 school 9 = 2+ school	6 = 1 park 12 = 2+ parks	3.5 = 1 hotel 7 = 2+ hotels	3.5 = 1 shopping area 7 = 2+ shopping	2 = 1 places of worship 4 = 2+ places of worship	7 = connected to neighboring sidewalk system 14 = connected to regional trail	0 = low density 7 = medium density 14 = high density	5 = 1/2 to 1 mile 10 = 1 - 2 mile 15 = over 2 miles	5 = top 15 survey responses, resident petitions & documented segments requested by groups & govt agencies	20 = initial investment 15 = major corridor	
										TOTAL TIER 1 POINTS												
										TIER 1 RANKING												
Short Segments (400 ft or less)																						

City of Novi Bicycle Accidents

July 1, 2019 and June 30, 2020

(Source: Jason Meier, Lieutenant – Support Services, City of Novi Police Department)

Between July 1, 2019 and June 30, 2020, the Novi Police Department responded to 9 accidents that involved a bicycle. Of those, 7 caused an injury, but none resulted in a fatality.



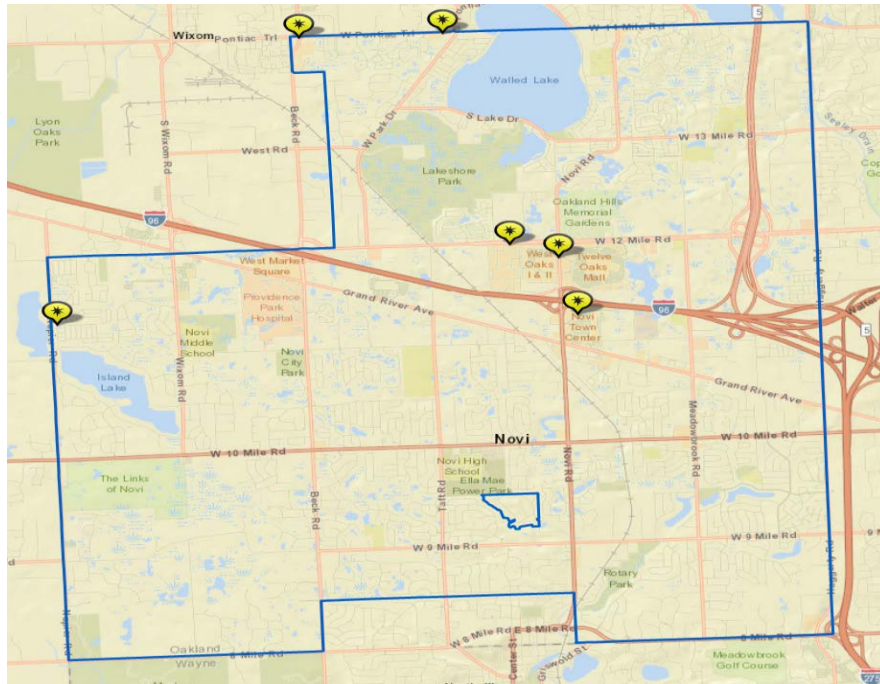
Incident Number	Date	Time	Location
19-39301	July 14, 2019	12:48pm	Beck and Ten Mile
19-46665	August 19, 2019	7:45pm	Pennsylvania and Potomac
19-48496	August 29, 2019	2:35pm	Grand River and Town Center
19-51367	September 13, 2019	5:27pm	Beck and Grand River
19-58030	October 16, 2019	10:55am	Twelve Mile and Meadowbrook
19-58122	October 19, 2019	5:30pm	43500 West Oaks
19-60104	October 29, 2019	7:18am	Wixom and Glenwood
20-19921	April 25, 2020	5:12pm	Nine Mile and Novi
20-25720	May 26, 2020	3:00pm	High Pointe and Haggerty

City of Novi Pedestrian Accidents

July 1, 2019 and June 30, 2020

(Source: Jason Meier, Lieutenant – Support Services, City of Novi Police Department)

Between July 1, 2019 and June 30, 2020, the Novi Police Department responded to 6 accidents that involved a pedestrian. Of those, all 6 caused an injury, but none resulted in a fatality.



Incident Number	Date	Time	Location
19-52588	September 19, 2019	6:07pm	44053 Twelve Mile
19-60143	October 31, 2019	2:25pm	44997 W. Pontiac Trail
19-67682	December 12, 2019	5:57pm	43175 Crescent
20-558	January 3, 2020	7:59pm	Novi and Twelve Mile
20-855	January 6, 2020	7:48am	Ferhoodle and Aichebaun
20-20833	April 30, 2020	1:45pm	Pontiac Trail and Beck

Welcome to Novi's Capital Improvement Program beginning July 1, 2020; Approved by City Council on May 4, 2020

All capital projects that are greater than \$25,000 will be included in this platform. Projects can be viewed in total or filtered by fiscal year and by budget category. This can be accomplished by selecting the year and category in the designated areas of the platform. If you have Questions or Comments about a project, follow the project's website links or submit your inquiry through the City's customer service portal. If you have any questions about the website itself please contact the City's Finance Department at [248-347-0465](tel:248-347-0465).

Fiscal Year

2020-2021	2021-2022	2022-2023
2023-2024	2024-2025	2025-2026

Funding Source

All Funding Sources

Department

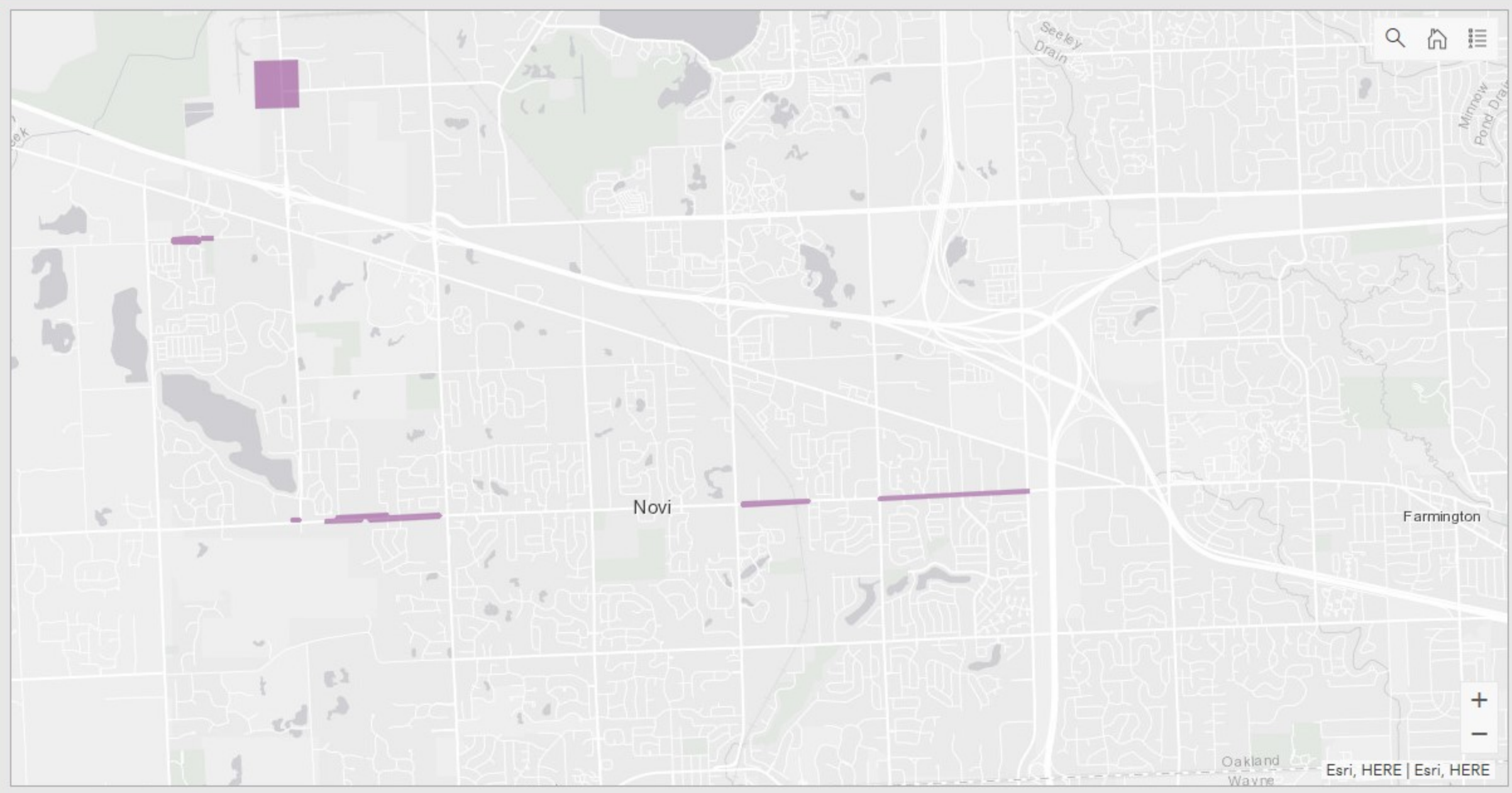
All Departments

Division

All Divisions

CIP Category

Sidewalks & Pathways



Number of Projects

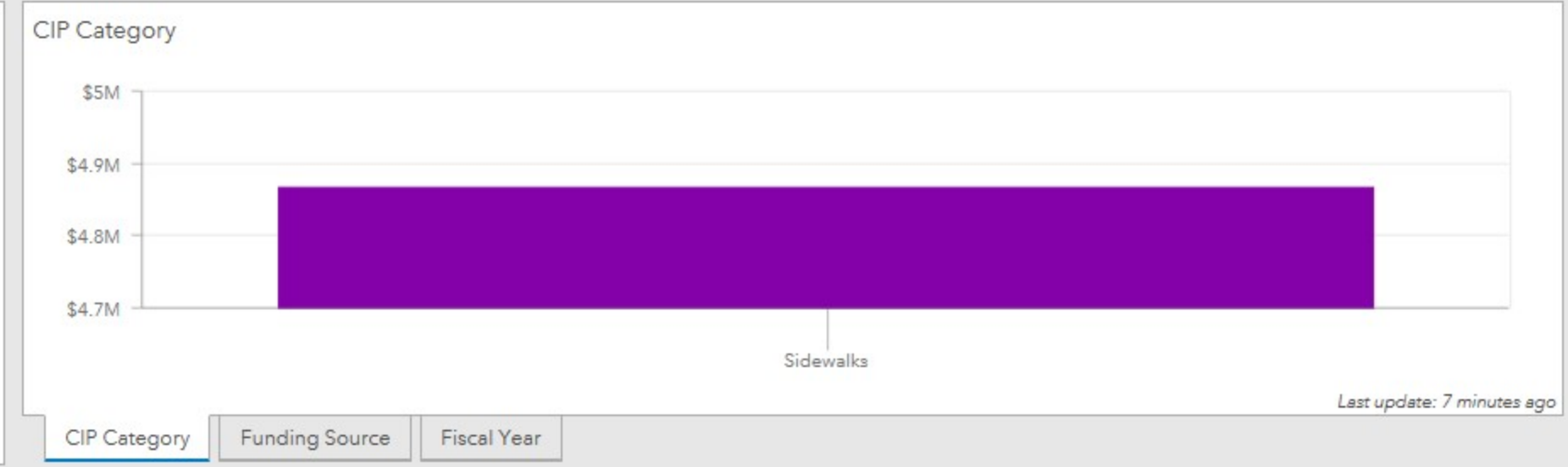
8

Includes each multi-year and multi-fund project

- 085-81 Segment 81A & 81B -- 10 Mile Road (South Side; Meadowbrook Road to Haggerty Road) - 8' Pathway
- 095-99 Segment 99 -- 10 Mile Road (South Side; Wixom Road to Beck Road) - 8' Pathway
- 105-90 Segment 90 -- 10 Mile Road (South side; Novi Road to Chipmunk Trail) - 8' Pathway
- 135-51 Segment 51 -- 10 Mile Road (North side; Dinsler Drive to Woodham) - 6' Sidewalk
- ENG047 City of Novi / Novi Community School District Non-motorized Improvements (Deerfield, Novi Meadows, Novi Woods, Orchard Hills, Parkview Elementary, & Novi Middle School Campuses) MDOT; City Share only - pursuing Safe Routes to Schools (SRTS) Grant
- ENG061 Segment 49 -- 10 Mile Road (North side, West of Wixom Road)- 10' Boardwalk and 6' Sidewalk
- ENG062 Segment 45 -- 12 Mile Road (South side, Northwest Neighborhood Park) -6' Sidewalk**
- ENG063 Segment 178 -- 12 Mile Road (South side; East of Albert Street) - 6' Sidewalk

Total Cost

\$4,865,720



MEMORANDUM

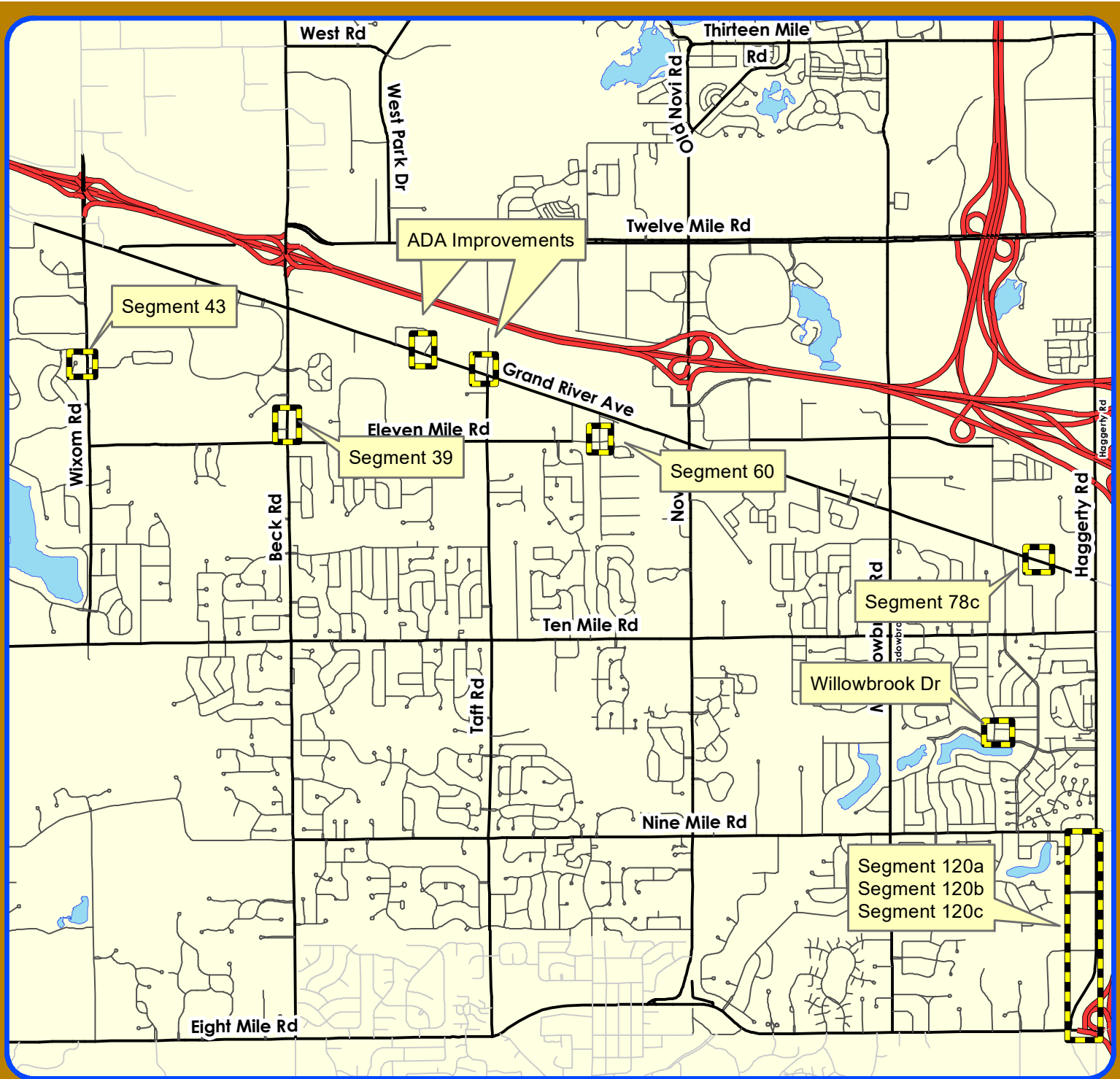


TO: WALKABLE NOVI COMMITTEE
FROM: REBECCA RUNKEL; PROJECT ENGINEER
SUBJECT: PUBLIC PROJECT UPDATES
DATE: JULY 2020

This memo provides an update on public sidewalk projects currently under design and/or construction.

Public Sidewalk Projects Currently in Design and/or Construction

- **2020 Pathway Gap and ADA Compliance Program (OHM)**
 - Bid opening on July 13th, construction award on July 27th City Council agenda
 - Construction to start August and continue into 2021, if necessary.
 - See attached project location map.
- **Novi Rd/I-96 Non-Motorized Crossing (MDOT)**
 - Bridge, pathway, and signal construction to start mid-July.
 - Includes connections to existing sidewalks, pedestrian crossing signals, and pedestrian bridge lighting.
- **Segment 70 – Meadowbrook Rd, east side, 11 Mile Rd to 25673 Meadowbrook Rd (OHM)**
 - Design complete, pending easement acquisition
 - Combined with Bishop Creek streambank stabilization project
- **Segment 51 - 10 Mile Rd, north side, Dinser Dr to Woodham Rd (Spalding DeDecker)**
 - 30% plans completed
 - Easement acquisition underway (6 easements required)
- **Safe Routes to School (OHM)**
 - \$1.2M grant awarded to City and Novi Community School District, December 2019. Includes ADA improvements, crosswalks, connecting pathways and sidewalk at six campuses.
 - 50% design plans expected this month.
 - Construction in 2021
- **ITC Trail Connector, Wildlife Woods to ITC (AECOM)**
 - Awarded MDOT TAP Grant (Transportation Alternatives Program)
 - Construction in 2021
- **10 Mile Rd Project, Haggerty Rd to Meadowbrook Rd (RCOC)**
 - Draft sidewalk design completed
 - Advance construct 2022



2020 Pathway Gap and ADA Compliance Program

Location Map

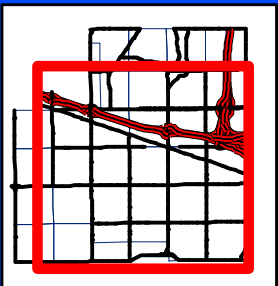
Map Author: Rebecca Runkel
 Date: July 1, 2020
 Project: 2020 Pathway Gap and ADA Compliance
 Version #: 1.1

Amended By:
 Date:
 Department:

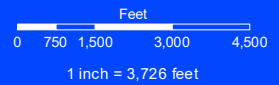
MAP INTERPRETATION NOTICE

Map information depicted is not intended to replace or substitute for any official or primary source. This map was intended to meet National Map Accuracy Standards and use the most recent, accurate sources available to the people of the City of Novi. Boundary measurements and area calculations are approximate and should not be construed as survey measurements performed by a licensed Michigan Surveyor as defined in Michigan Public Act 132 of 1970 as amended. Please contact the City GIS Manager to confirm source and accuracy information related to this map.

 Project Area



City of Novi
 Engineering Division
 Department of Public Works
 26300 Lee BeGole Drive
 Novi, MI 48375
cityofnovi.org



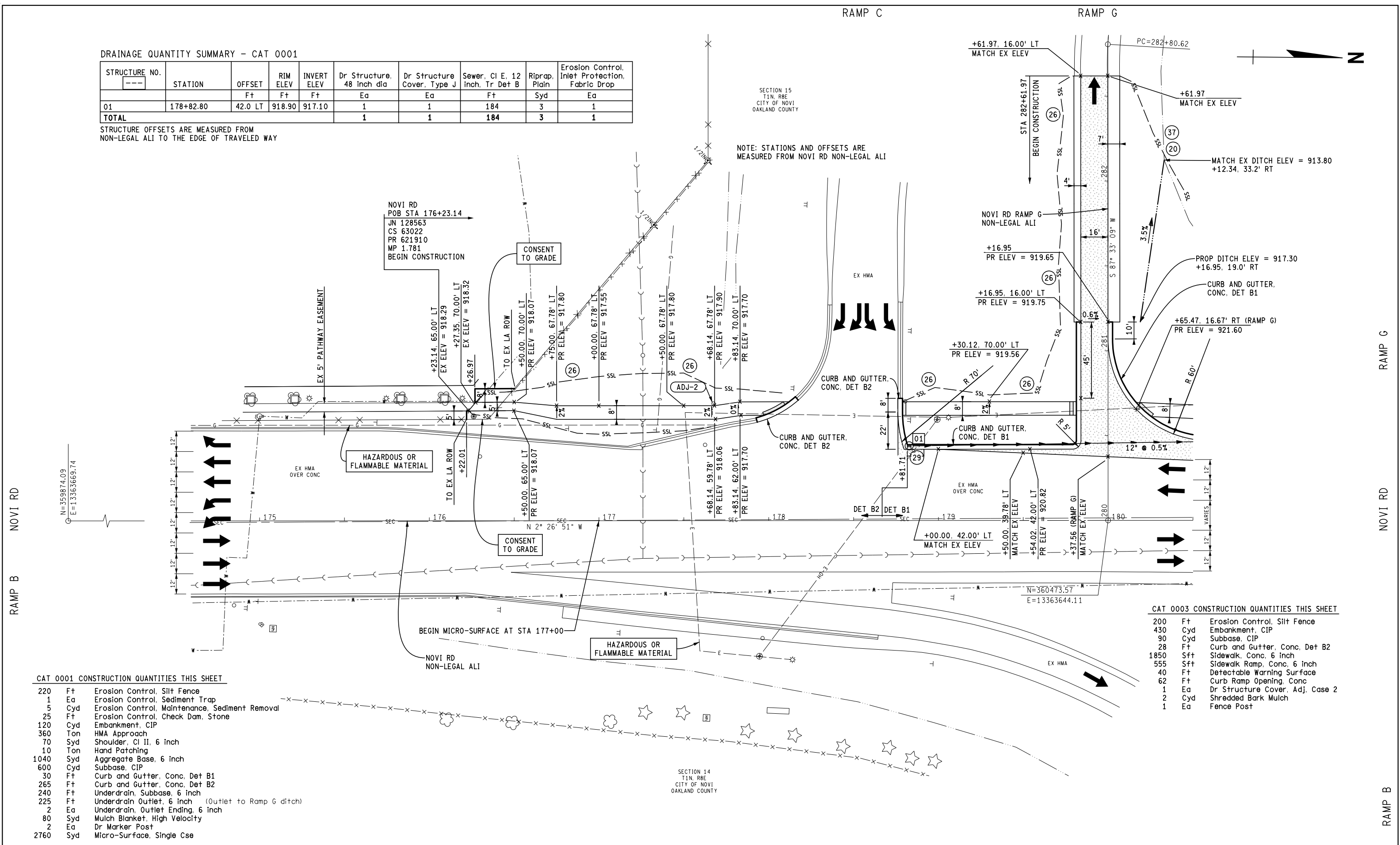
DRAINAGE QUANTITY SUMMARY - CAT 0001

STRUCTURE NO.	STATION	OFFSET	RIM ELEV	INVERT ELEV	Dr Structure, 48 inch dia	Dr Structure Cover, Type J	Sewer, CI E. 12 inch, Tr Det B	Riprap, Plain	Erosion Control, Inlet Protection, Fabric Drop
		Ft	Ft	Ft	Ea	Ea	Ft	Syd	Ea
01	178+82.80	42.0 LT	918.90	917.10	1	1	184	3	1
TOTAL					1	1	184	3	1

STRUCTURE OFFSETS ARE MEASURED FROM NON-LEGAL ALI TO THE EDGE OF TRAVELED WAY

SECTION 15
T1N, R8E
CITY OF NOVI
OAKLAND COUNTY

NOTE: STATIONS AND OFFSETS ARE MEASURED FROM NOVI RD NON-LEGAL ALI



CAT 0001 CONSTRUCTION QUANTITIES THIS SHEET

220	Ft	Erosion Control, Silt Fence
1	Ea	Erosion Control, Sediment Trap
5	Cyd	Erosion Control, Maintenance, Sediment Removal
25	Ft	Erosion Control, Check Dam, Stone
120	Cyd	Embankment, CIP
360	Ton	HMA Approach
70	Syd	Shoulder, CI II, 6 inch
10	Ton	Hand Patching
1040	Syd	Aggregate Base, 6 inch
600	Cyd	Subbase, CIP
30	Ft	Curb and Gutter, Conc, Det B1
265	Ft	Curb and Gutter, Conc, Det B2
240	Ft	Underdrain, Subbase, 6 inch
225	Ft	Underdrain Outlet, 6 inch (Outlet to Ramp G ditch)
2	Ea	Underdrain, Outlet Ending, 6 inch
80	Syd	Mulch Blanket, High Velocity
2	Ea	Dr Marker Post
2760	Syd	Micro-Surface, Single Cse

CAT 0003 CONSTRUCTION QUANTITIES THIS SHEET

200	Ft	Erosion Control, Silt Fence
430	Cyd	Embankment, CIP
90	Cyd	Subbase, CIP
28	Ft	Curb and Gutter, Conc, Det B2
1850	Sft	Sidewalk, Conc, 6 inch
555	Sft	Sidewalk Ramp, Conc, 6 inch
40	Ft	Detectable Warning Surface
62	Ft	Curb Ramp Opening, Conc
1	Ea	Dr Structure Cover, Adj, Case 2
2	Cyd	Shredded Bark Mulch
1	Ea	Fence Post

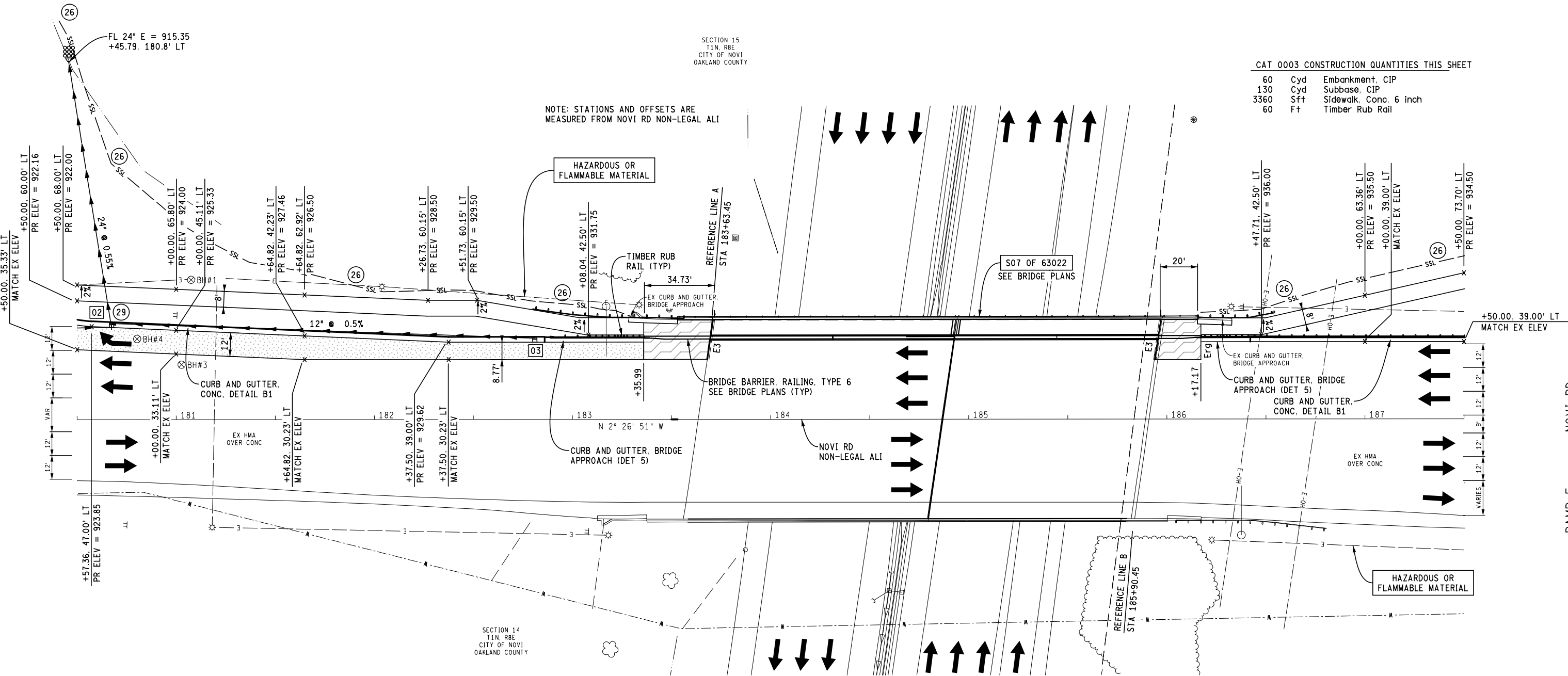


RAMP G

NOVI RD

NOVI RD

RAMP E



SECTION 15
T1N, R8E
CITY OF NOVI
OAKLAND COUNTY

NOTE: STATIONS AND OFFSETS ARE
MEASURED FROM NOVI RD NON-LEGAL ALI

CAT 0003 CONSTRUCTION QUANTITIES THIS SHEET

60	Cyd	Embankment, CIP
130	Cyd	Subbase, CIP
3360	Sft	Sidewalk, Conc, 6 inch
60	Ft	Timber Rub Rail

DRAINAGE QUANTITY SUMMARY

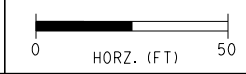
STRUCTURE NO.	STATION	OFFSET	RIM ELEV	OUTLET ELEV	INLET ELEV	Dr Structure, 48 inch dia	Dr Structure Cover, Type J	Dr Structure, Add Depth of 48 inch dia, 8 foot to 15 foot	Sewer, Cl A, 12 inch, Tr Det B	Sewer, Cl E, 24 inch, Tr Det B	Culv End Sect, 24 inch	Riprap, Plain	Erosion Control, Inlet Protection, Fabric Drop
---		Ft	Ft	Ft	Ft	Ea	Ea	Ft	Ft	Ft	Ea	Syd	Ea
02	180+67.36	46.6 LT	924.20	916.10		1	1	2		136	1	3	1
					916.20 S								
					918.00 N								
					920.70 N (U/D)								
03	182+81.00	39.0 LT	930.80	919.10		1	1	6	214				1
TOTAL						2	2	8	214	136	1	3	2

STRUCTURE OFFSETS ARE MEASURED FROM
NLA TO THE EDGE OF TRAVELED WAY

CAT 0001 CONSTRUCTION QUANTITIES THIS SHEET

640	Ft	Erosion Control, Silt Fence
5	Cyd	Erosion Control, Maintenance, Sediment Removal
140	Cyd	Embankment, CIP
360	Cyd	Subbase, CIP
725	Syd	Aggregate Base, 6 inch
160	Ton	HMA Approach
420	Ft	Underdrain, Subbase, 6 inch
120	Syd	Conc Pavt, Bridge Approach, Reinf, High Performance
270	Syd	Conc Pavt, Misc, Nonreinf, 9 inch, High Performance
350	Ft	Curb and Gutter, Conc, Det B1 (DET 5)
75	Ft	Curb and Gutter, Bridge Approach
80	Ea	Lane Tie, Epoxy Anchored
42	Ft	Joint, Expansion, E3
18	Ft	Joint, Expansion, Erg
5950	Syd	Micro-Surface, Single Cse

FINAL ROW PLAN REVISIONS		(SUBMITTAL DATE:)	
NO.	DATE	AUTH	DESCRIPTION



DATE: 01/09/20	CS: 63022
DESIGN UNIT: NADJARIAN	JN: 128563
TSC: OAKLAND	

NOVI RD CONSTRUCTION SHEET		DRAWING	SHEET
I-96 UNDER NOVI RD		NOVI CON 002	21
STA 180+50 TO STA 187+50			

DRAINAGE QUANTITY SUMMARY - CAT 0001

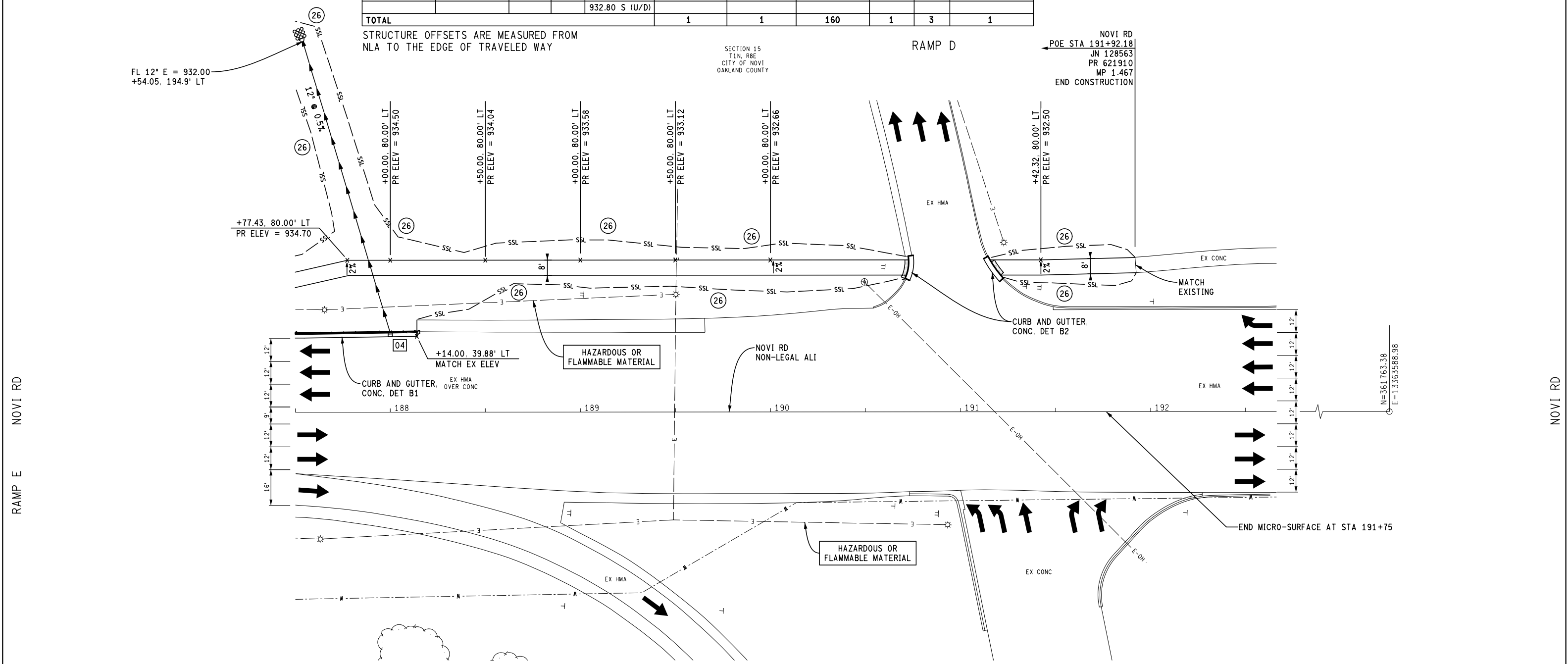
STRUCTURE NO.	STATION	OFFSET	RIM ELEV	INVERT ELEV	Dr Structure, 48 inch dia	Dr Structure Cover, Type J	Sewer, CI E, 12 inch, Tr Det B	Culv End Sect, 12 inch	Riprap, Plain	Erosion Control, Inlet Protection, Fabric Drop
---		Ft	Ft	Ft	Ea	Ea	Ft	Ea	Syd	Ea
04	188+00.00	39.7 LT	935.46	932.80 S	1	1	160	1	3	1
TOTAL				932.80 S (U/D)	1	1	160	1	3	1

STRUCTURE OFFSETS ARE MEASURED FROM NLA TO THE EDGE OF TRAVELED WAY

SECTION 15
T1N, R8E
CITY OF NOVI
OAKLAND COUNTY

RAMP D

NOVI RD
POE STA 191+92.18
JN 128563
PR 621910
MP 1.467
END CONSTRUCTION



SECTION 14
T1N, R8E
CITY OF NOVI
OAKLAND COUNTY

CAT 0003 CONSTRUCTION QUANTITIES THIS SHEET

810	Ft	Erosion Control, Silt Fence
60	Cyd	Embankment, CIP
120	Cyd	Subbase, CIP
20	Ft	Curb and Gutter, Conc, Det B2
3040	Sft	Sidewalk, Conc, 6 inch
80	Sft	Sidewalk Ramp, Conc, 6 inch
18	Ft	Detectable Warning Surface
24	Ft	Curb Ramp Opening, Conc

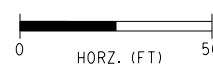
CAT 0001 CONSTRUCTION QUANTITIES THIS SHEET

120	Ft	Erosion Control, Silt Fence
5	Cyd	Erosion Control, Maintenance, Sediment Removal
70	Cyd	Embankment, CIP
60	Cyd	Subbase, CIP
20	Syd	Aggregate Base, 6 inch
64	Ft	Curb and Gutter, Conc, Det B1
25	Ea	Lane Tie, Epoxy Anchored
64	Ft	Underdrain, Subbase, 6 inch
4160	Syd	Micro-Surface, Single Cse

RAMP E

RAMP A

FINAL ROW PLAN REVISIONS (SUBMITTAL DATE:)							
NO.	DATE	AUTH	DESCRIPTION	NO.	DATE	AUTH	DESCRIPTION



FILE: 128563_NoviRd_Con003.dgn

DATE: 01/09/20
DESIGN UNIT: NADJARIAN
TSC: OAKLAND

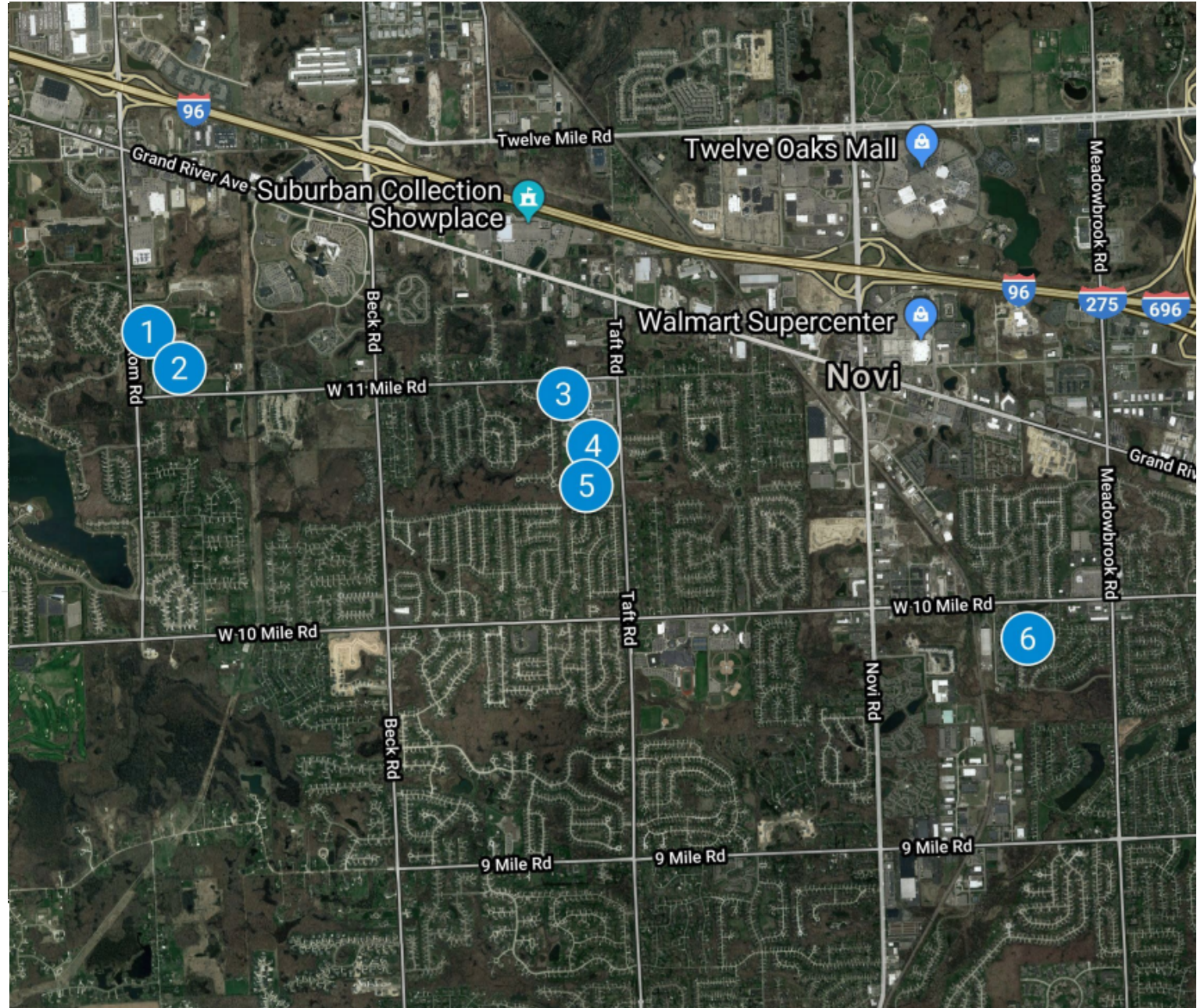
CS: 63022
JN: 128563

NOVI RD CONSTRUCTION SHEET
I-96 UNDER NOVI RD
STA 187+00 TO STA 192+50
DRAWING NOVI CON 003 SHEET 23

Overall Project Locations: Novi SRTS Project

Schools

- 1 Deerfield Elementary School
- 2 Novi Middle School
- 3 Parkview Elementary School
- 4 Novi Meadows Elementary School (Fifth Grade Version)
- 5 Novi Woods Elementary School
- 6 Orchard Hills Elementary School



Deerfield Proposed Engineering E's

Deerfield Elementary Assumed Walking Boundary

 Deerfield Elementary School



ASSUMED Walking Boundary

Section II - Project Mapping Requirements:

- No historic properties adjacent to work areas
- No river/stream/drains adjacent to work areas
- No hazardous/toxic sites adjacent to work areas
- No wetlands adjacent to work areas
- No public parks/access adjacent to work areas
- No coastal zones adjacent to work areas
- No FEMA floodplains adjacent to work areas
- No PA 116 property adjacent to work areas

Proposed Infrastructure Improvements

- (1) Install ADA compliant ramp and cross walk pavement markings



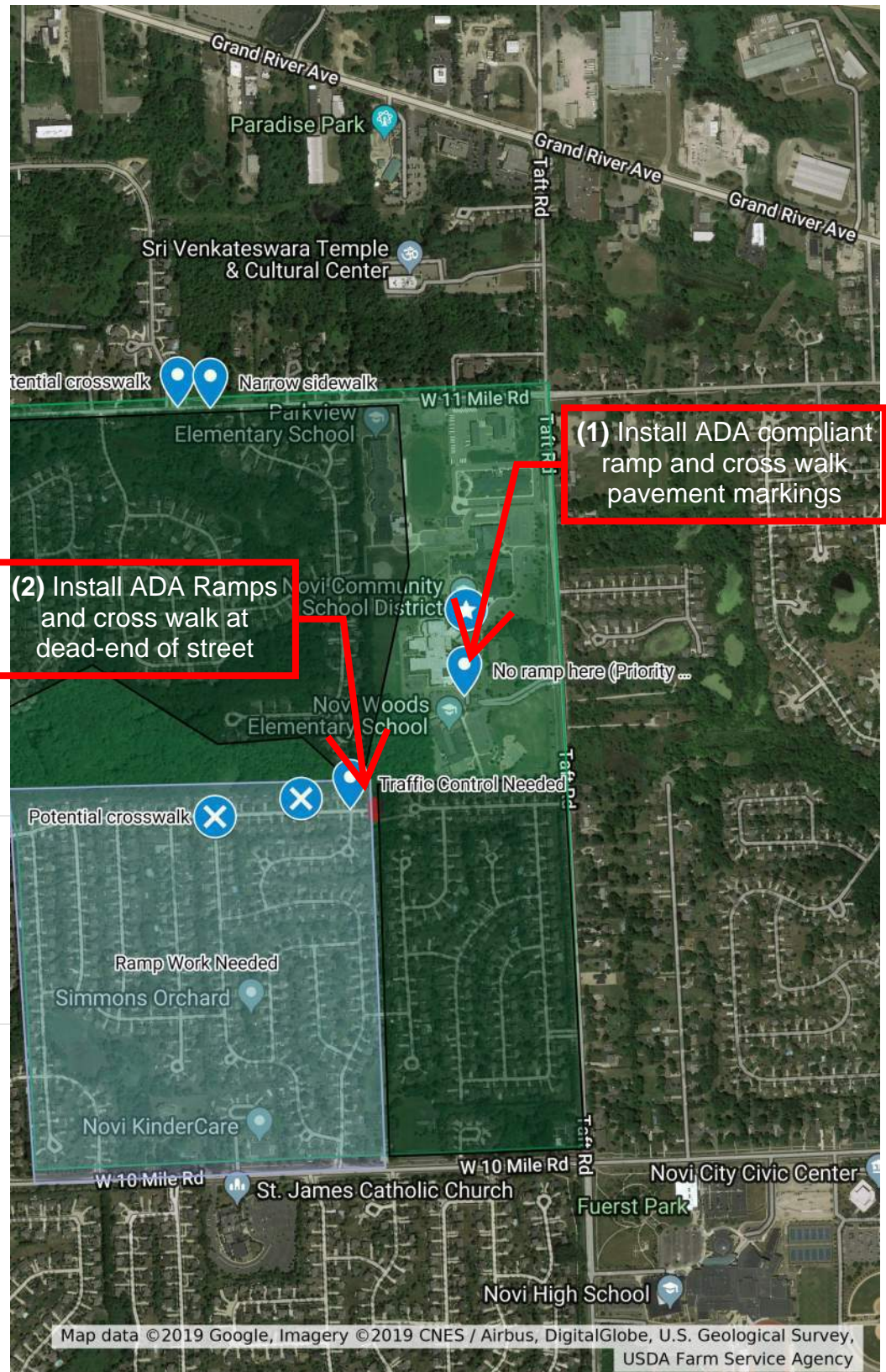
Novi Meadows Proposed Engineering E's

Section II - Project Mapping Requirements:

- No historic properties adjacent to work areas
- No river/stream/drains adjacent to work areas
- No hazardous/toxic sites adjacent to work areas
- No wetlands adjacent to work areas
- No public parks/access adjacent to work areas
- No coastal zones adjacent to work areas
- No FEMA floodplains adjacent to work areas
- No PA 116 property adjacent to work areas

Proposed Infrastructure Improvements

- (1) Install ADA compliant ramp and cross walk pavement markings
- (2) Install ADA Ramps and cross walk at dead-end of street



Novi Middle School Proposed Engineering E's

Novi Middle School Assumed Walking Boundary

 Novi Middle School



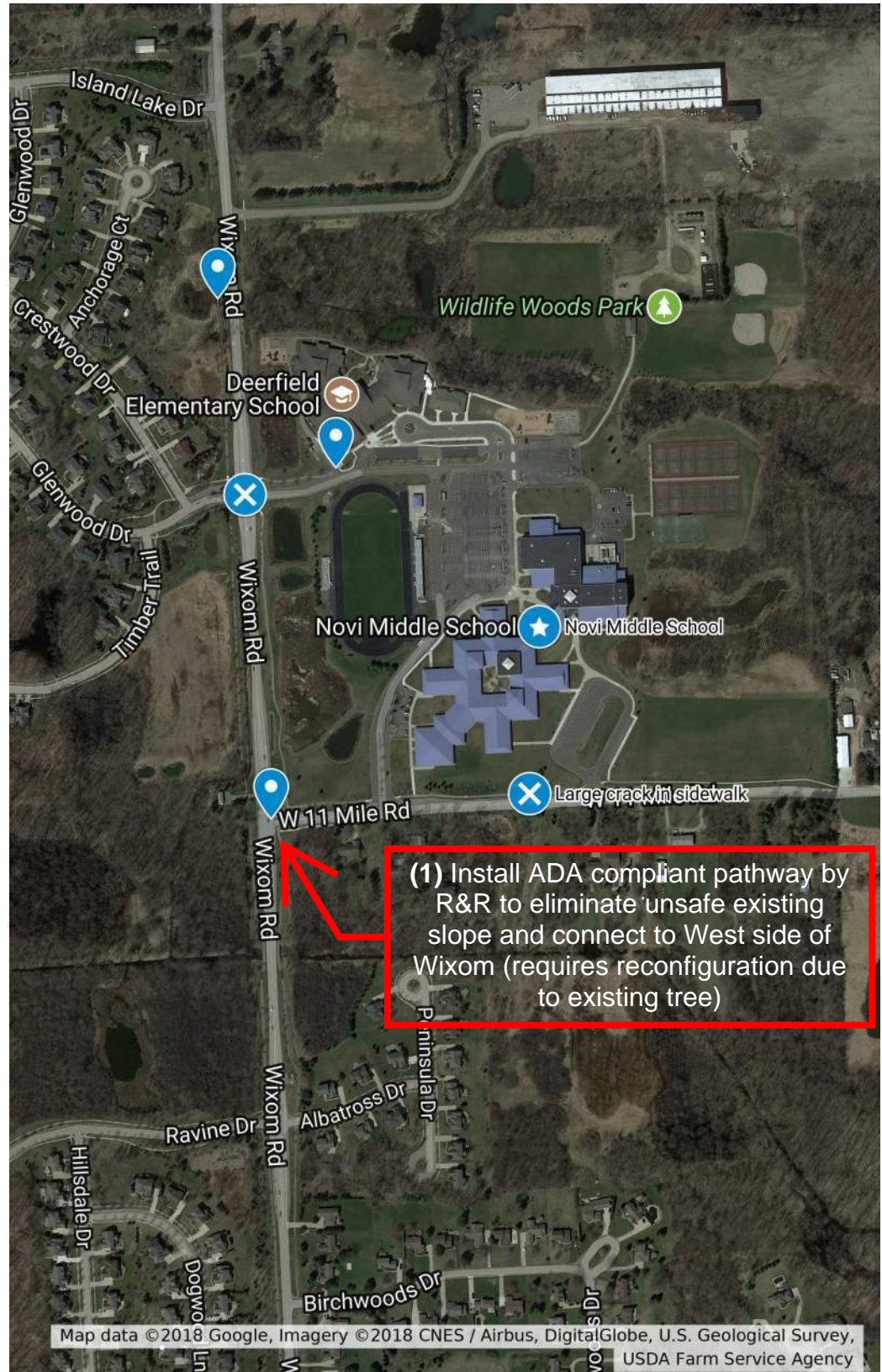
ASSUMED Walking Boundary

Section II - Project Mapping Requirements:

- No historic properties adjacent to work areas
- No river/stream/drains adjacent to work areas
- No hazardous/toxic sites adjacent to work areas
- No wetlands adjacent to work areas
- No public parks/access adjacent to work areas
- No coastal zones adjacent to work areas
- No FEMA floodplains adjacent to work areas
- No PA 116 property adjacent to work areas

Proposed Infrastructure Improvements

(1) Install ADA compliant pathway by R&R to eliminate unsafe existing slope and connect to West side of Wixom (requires reconfiguration due to existing tree)



(1) Install ADA compliant pathway by R&R to eliminate unsafe existing slope and connect to West side of Wixom (requires reconfiguration due to existing tree)

(Informational Note)

City of Novi will be installing an RRFB crossing for the ITC Pathway just East of the Middle School in Summer of 2019

Novi Woods Proposed Engineering E's

Novi Woods Walking Boundary



Novi Woods Elementary School



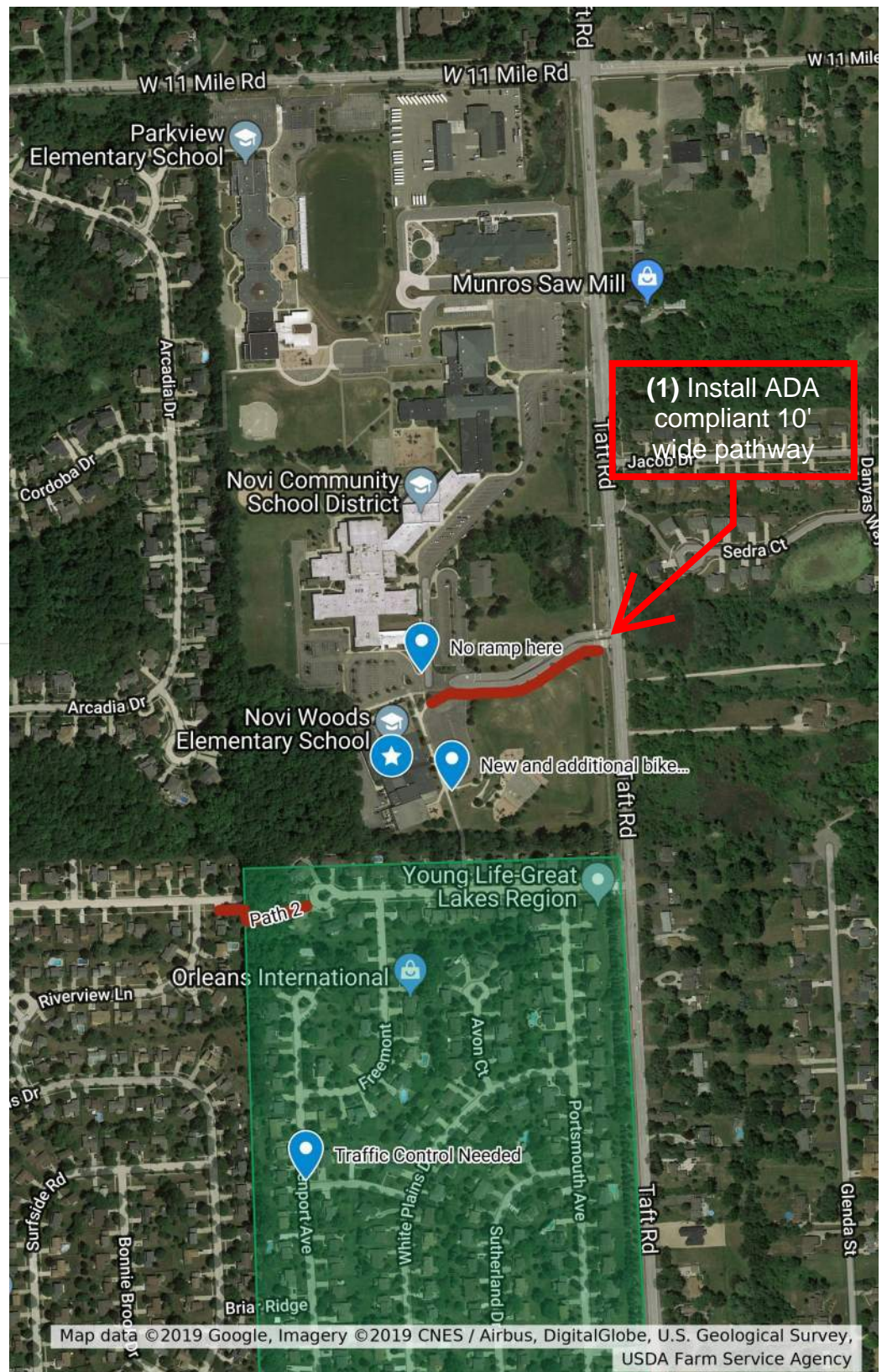
Novi Woods Walking Boundary

Proposed Infrastructure Improvements

(1) Install ADA compliant 10' wide pathway from existing pedestrian facilities along Taft Road to Novi Woods Elementary School

Section II - Project Mapping Requirements:

- No historic properties adjacent to work areas
- No river/stream/drains adjacent to work areas
- No hazardous/toxic sites adjacent to work areas
- No wetlands adjacent to work areas
- No public parks/access adjacent to work areas
- No coastal zones adjacent to work areas
- No FEMA floodplains adjacent to work areas
- No PA 116 property adjacent to work areas



Map data ©2019 Google, Imagery ©2019 CNES / Airbus, DigitalGlobe, U.S. Geological Survey, USDA Farm Service Agency

Orchard Hills Proposed Engineering E's

Orchard Hills Walking Boundary



Orchard Hills Elementary School



Walking Boundary

Proposed Infrastructure Improvements

(1) Install ADA compliant pathway connecting an existing pathway to the school property (as students are currently walking across the grass)



(2) Remove existing curb and install ADA compliant ramp on south end of the crosswalk, located on school property

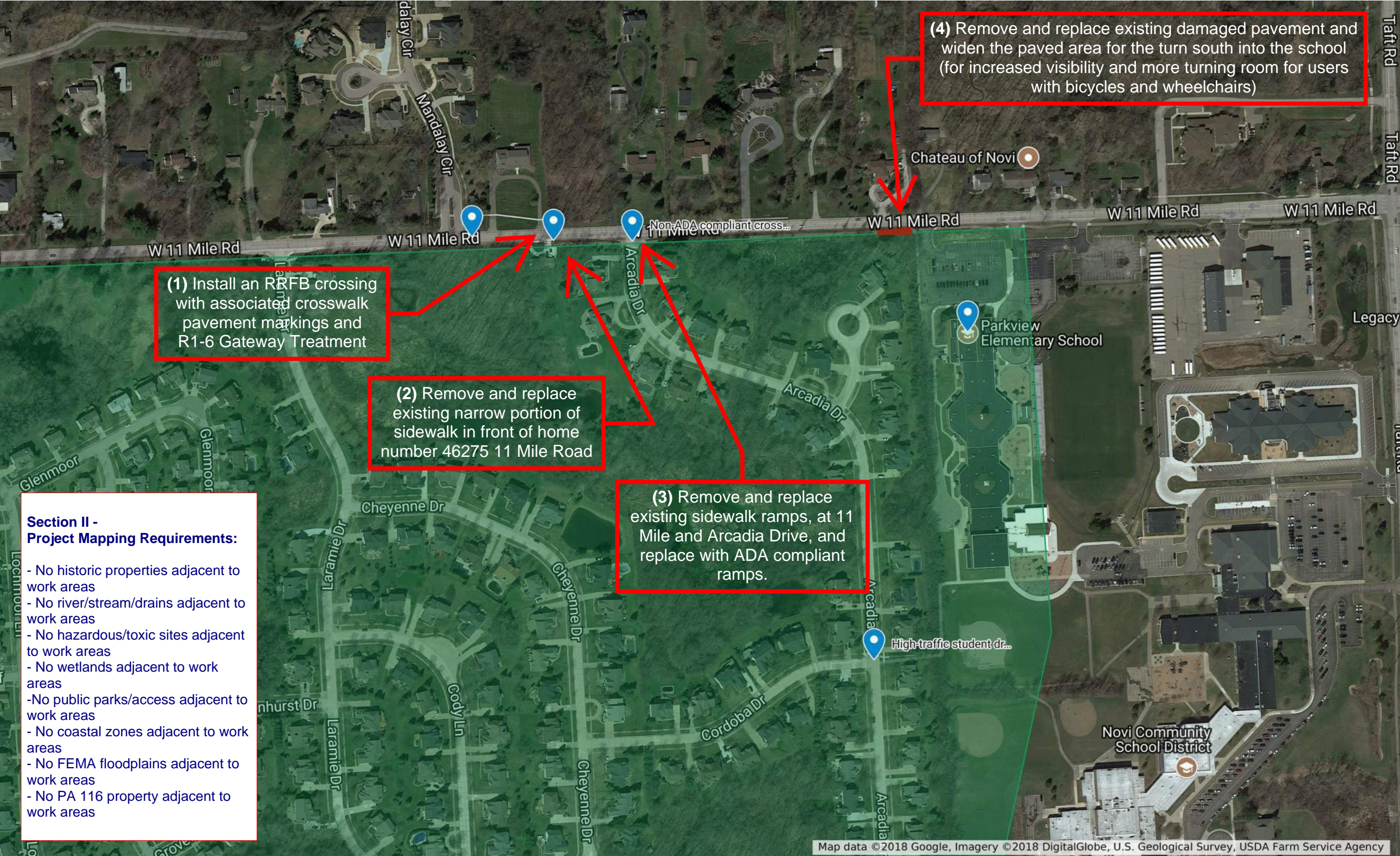
(3) Install 5-ft sidewalks and ADA crossings along both sides of the road along;

1. Tamara Street (School to Borchart Drive)
2. Borchart Drive (Existing pathway to Meadowbrook Road)



Parkview Elementary Proposed Engineering E's

- Parkview Walking Boundary
-  Parkview Elementary School
-  Parkview Walking Boundary



(1) Install an RRFB crossing with associated crosswalk pavement markings and R1-6 Gateway Treatment

(2) Remove and replace existing narrow portion of sidewalk in front of home number 46275 11 Mile Road

(3) Remove and replace existing sidewalk ramps, at 11 Mile and Arcadia Drive, and replace with ADA compliant ramps.

(4) Remove and replace existing damaged pavement and widen the paved area for the turn south into the school (for increased visibility and more turning room for users with bicycles and wheelchairs)

Proposed Infrastructure Improvements

(1) Install an RRFB crossing with associated crosswalk pavement markings and R1-6 Gateway Treatment

(2) Remove and replace existing narrow portion of sidewalk in front of home number 46275 11 Mile Road

(3) Remove and replace existing sidewalk ramps, at 11 Mile and Arcadia Drive, and replace with ADA compliant ramps.

(4) Remove and replace existing damaged pavement and widen the paved area for the turn south into the school (for increased visibility and more turning room for users with bicycles and wheelchairs)

- Section II - Project Mapping Requirements:**
- No historic properties adjacent to work areas
 - No river/stream/drains adjacent to work areas
 - No hazardous/toxic sites adjacent to work areas
 - No wetlands adjacent to work areas
 - No public parks/access adjacent to work areas
 - No coastal zones adjacent to work areas
 - No FEMA floodplains adjacent to work areas
 - No PA 116 property adjacent to work areas

Map data ©2018 Google, Imagery ©2018 DigitalGlobe, U.S. Geological Survey, USDA Farm Service Agency



FINAL ROW PLAN REVISIONS			SUBMITTAL DATE:		
NO.	DATE	AUTH	NO.	DATE	AUTH



FILE:

DATE: 10/13/19
DESIGN UNIT:
TSC:

CS:
JN:

PLAN VIEW SKETCH
WILDLIFE WOODS PARK / ITC CONNECTOR PATHWAY
NOVI, MICHIGAN

DRAWING	SHEET